

CORPUS CHRISTI, TEXAS

HI-VOR/DME or TACAN RWY 13R

VORTAC NGP 114.0 Chan 87	APCH CRS 143°	Rwy Idg TDZE Arpt Elev 8002 13 18
--	-------------------------	---

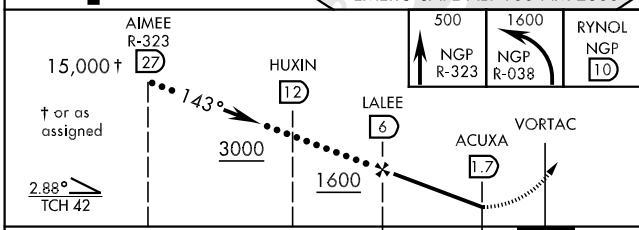
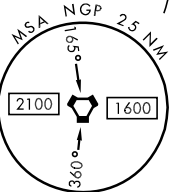
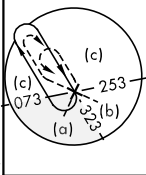
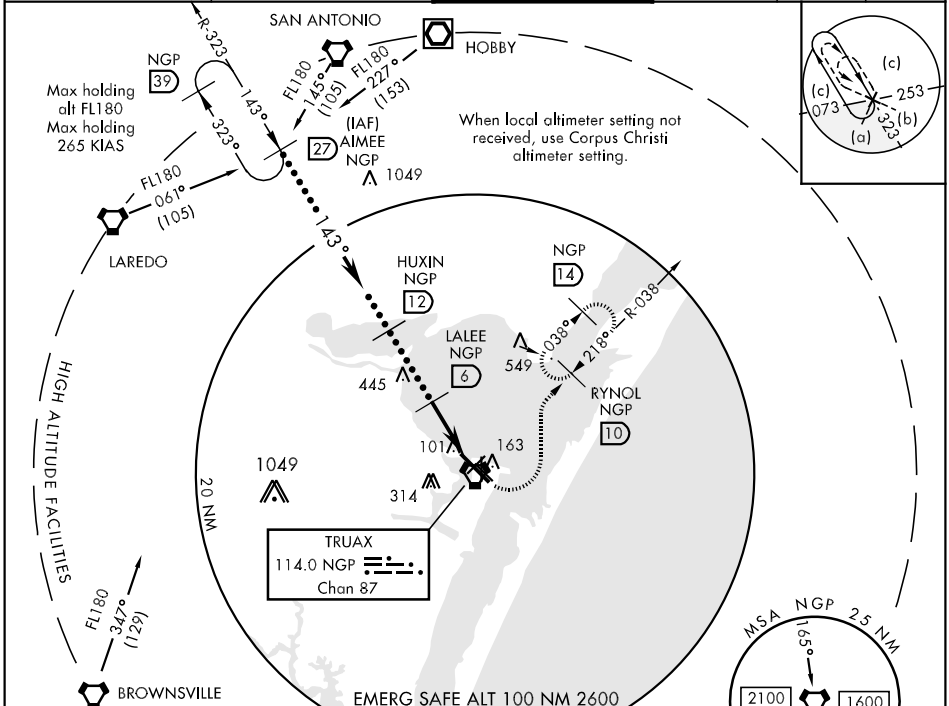
JAL-98 [USN]

CORPUS CHRISTI NAS (TRUAX FLD) (KNGP)

*When ALS inop, increase CAT C vis to 1 mile, CAT DE to 1¼ miles.

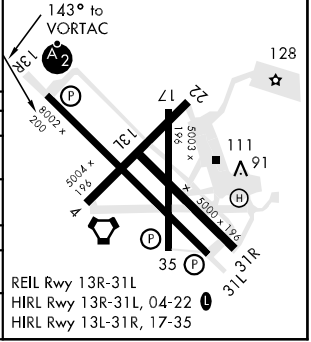
SALSF MISSED APPROACH: Climb to 500 via NGP VORTAC R-323, then climbing left turn to 1600 via NGP R-038 to RYNOL and hold.

ATIS ★ 114.0 127.9 290.9	CORPUS CHRISTI APP CON 120.9 348.725	NAVY CORPUS TOWER ★ 134.85 0 340.2 (N) 125.525 360.2 (S)	GND CON 118.7 257.85	CLNC DEL 314.3	ASR/PAR
------------------------------------	--	--	--------------------------------	--------------------------	---------



ELEV 18	TDZE 13
---------	---------

CATEGORY	C	D	E
S-13R *	360-¾ 347 (400-¾)	360-1	347 (400-1)
CIRCLING	480-1½ 462 (500-1½)	580-2 562 (600-2)	620-2¼ 602 (700-2¼)
CORPUS CHRISTI ALTIMETER SETTING			
S-13R *	400-¾ 387 (400-¾)	400-1	387 (400-1)
CIRCLING	500-1½ 482 (500-1½)	580-2 562 (600-2)	660-2¼ 642 (700-2¼)



CORPUS CHRISTI, TEXAS
Amdt 3 07FEB13

27°42'N-97°17'W CORPUS CHRISTI NAS (TRUAX FLD) (KNGP)

HI-VOR/DME or TACAN RWY 13R

SC-3, 07 FEB 2013 to 07 MAR 2013

SC-3, 07 FEB 2013 to 07 MAR 2013