

WAAS Ch 90112 W35A	APP CRS 351°	Rwy Idg 6005 THRE 331 Apt Elev 342
--	------------------------	--

RNAV (GPS) RWY 35

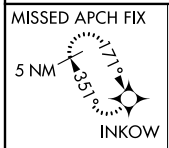
CONCORD MUNI (CON)

▼ Circling to Rwy 12/30 NA at night. When VGSI inoperative, Circling Rwy 17 NA at night. DME/DME RNP-0.3 NA. Visibility reduction by helicopters NA. For inoperative MALSR, increase LPV all Cats visibility to 1 ¼ mile, increase LNAV Cats A/B to 1 mile.

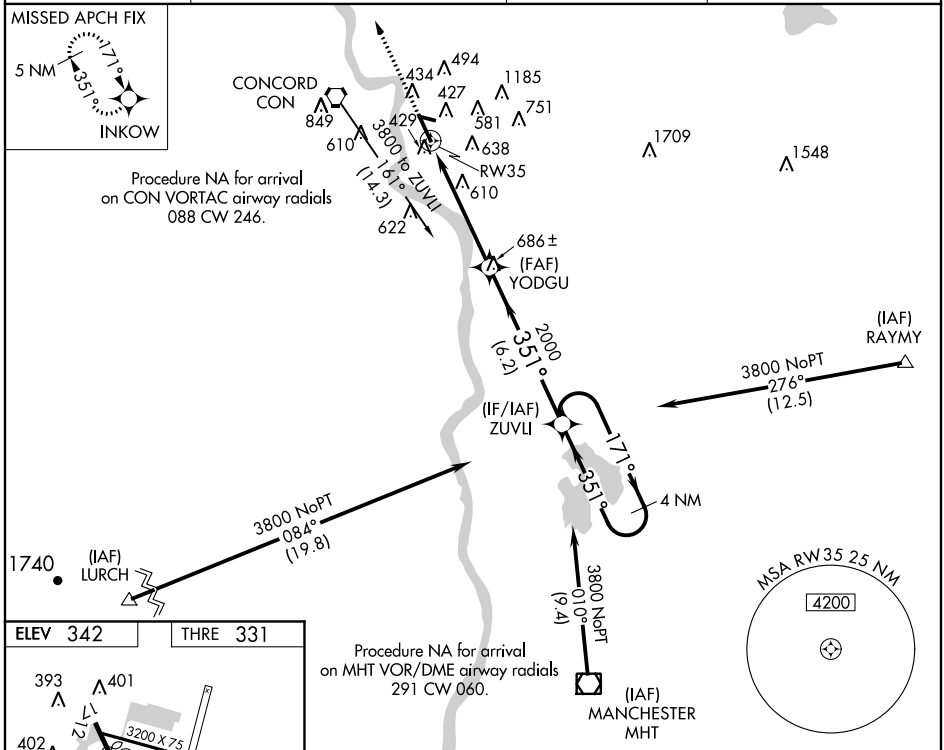
MALSR

MISSED APPROACH:
Climb to 4500 direct INKOW and hold.

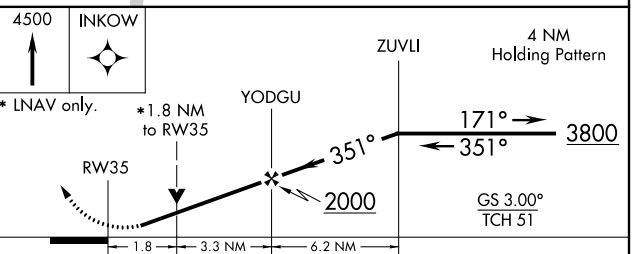
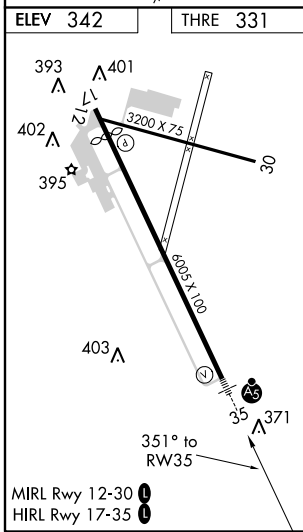
ASOS 132.32	BOSTON APP CON 127.35 269.075	CLNC DEL 133.65	UNICOM 122.7 (CTAF) 0
-----------------------	---	---------------------------	---------------------------------



Procedure NA for arrival on CON VORTAC airway radials 088 CW 246.



Procedure NA for arrival on MHT VOR/DME airway radials 291 CW 060.



CATEGORY	A	B	C	D
LPV DA	668-¾ 337 (400-¾)			
LNAV MDA	940-¾	609 (600-¾)	940-1¼ 609 (600-1¼)	940-1½ 609 (600-1½)
CIRCLING	940-1 598 (600-1)	1020-1 678 (700-1)	1020-2 678 (700-2)	1220-2¾ 878 (900-2¾)

NE-1, 07 FEB 2013 to 07 MAR 2013

NE-1, 07 FEB 2013 to 07 MAR 2013