


WAAS CH <b>86619</b> <b>W28B</b>	APP CRS <b>279°</b>	Rwy Idg TDZE Apt Elev	<b>8000</b> <b>813</b> <b>815</b>
--	------------------------	-----------------------------	---

# RNAV (GPS) Y RWY 28R

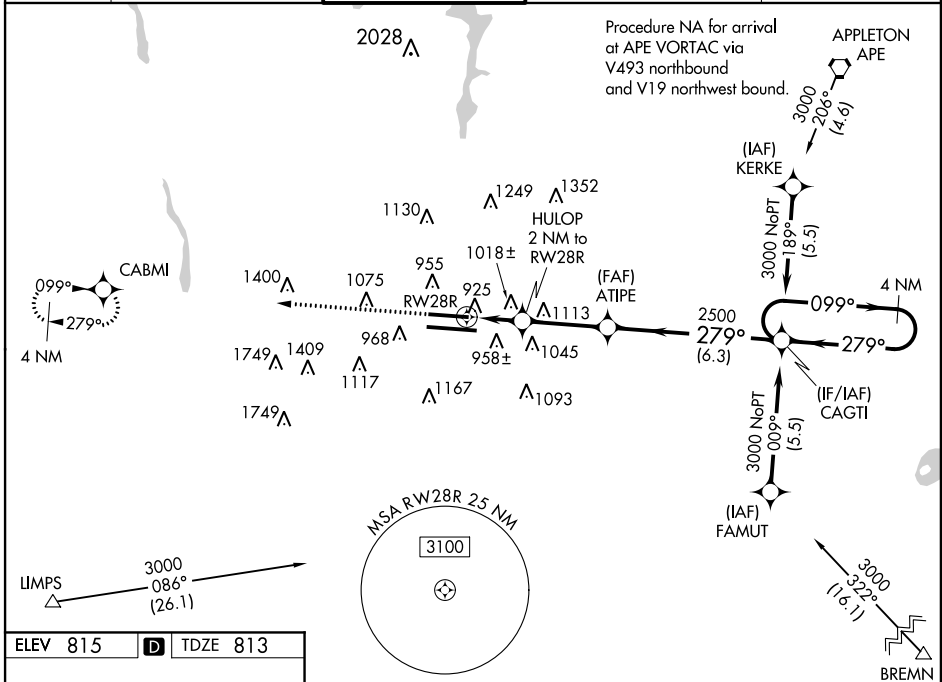
COLUMBUS/PORT COLUMBUS INTL (CMH)

▼ For uncompensated Baro-VNAV systems, LNAV/VNAV NA below -16°C (4°F) or above 47°C (116°F). DME/DME RNP-0.3 NA. Simultaneous approach authorized with ILS or LOC Rwy 28L. LNAV procedure NA during simultaneous operations. Use of FD or AP providing RNAV track guidance required during simultaneous operations.

MALSR 

MISSED APPROACH: Climb to 3000 direct CABMI and hold.

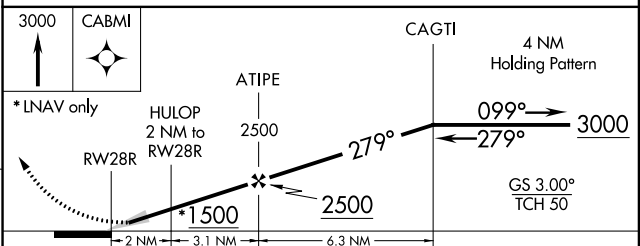
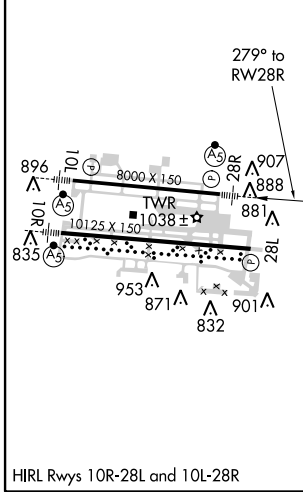
ATIS <b>124.6</b>	COLUMBUS APP CON <b>125.95 371.975</b>	COLUMBUS TOWER <b>132.7 257.8</b>	GND CON <b>121.9 348.6</b>	CLNC DEL <b>126.3</b>
----------------------	---	--------------------------------------	-------------------------------	--------------------------



EC-2, 07 FEB 2013 to 07 MAR 2013

EC-2, 07 FEB 2013 to 07 MAR 2013

ELEV 815	<b>D</b>	TDZE 813
----------	----------	----------



CATEGORY	A	B	C	D
LPV DA		1013-1/2	200 (200-1/2)	
LNAV/VNAV DA		1175-3/4	362 (400-3/4)	
LNAV MDA	1420-1/2	607 (700-1/2)	1420-1 1/4 607 (700-1 1/4)	1420-1 1/2 607 (700-1 1/2)
CIRCLING	1420-1	605 (700-1)	1420-1 3/4 605 (700-1 3/4)	1420-2 605 (700-2)