


APP CRS	Rwy Idg	<b>8000</b>
<b>279°</b>	TDZE	<b>813</b>
	Apt Elev	<b>815</b>

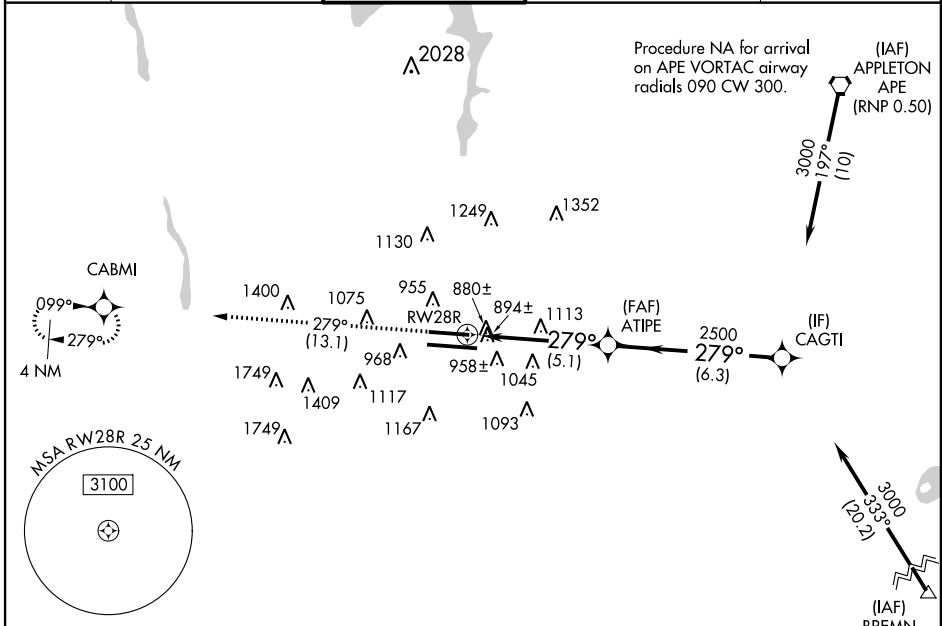
# RNAV (RNP) Z RWY 28R

COLUMBUS/PORT COLUMBUS INTL (CMH)

▼ GPS Required. For uncompensated Baro-VNAV systems, procedure NA below -16°C (1°F) or above 47°C (117°F). For inop MALS/R, increase RNP 0.11 all Cats visibility to 1, and RNP 0.30 all Cats visibility to 1½. Simultaneous approach authorized with ILS or LOC Rwy 28L. Use of FD or AP providing RNAV track guidance required during simultaneous operations.

MALS/R  MISSED APPROACH: Climb to 3000 on track 279° to CABMI and hold.

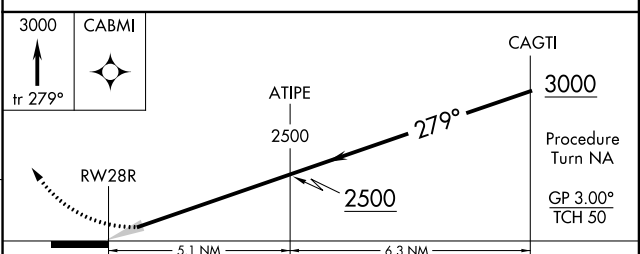
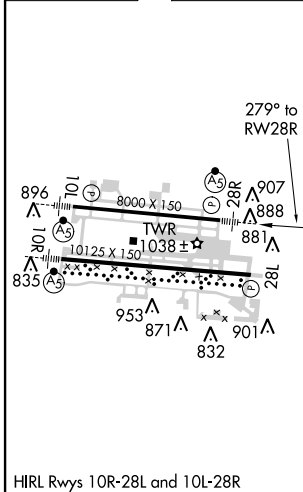
ATIS <b>124.6</b>	COLUMBUS APP CON <b>125.95 371.975</b>	COLUMBUS TOWER <b>132.7 257.8</b>	GND CON <b>121.9 348.6</b>	CLNC DEL <b>126.3</b>
----------------------	-------------------------------------------	--------------------------------------	-------------------------------	--------------------------



EC-2, 07 FEB 2013 to 07 MAR 2013

EC-2, 07 FEB 2013 to 07 MAR 2013

ELEV	<b>815</b>	<b>D</b>	TDZE	<b>813</b>
------	------------	----------	------	------------



CATEGORY	A	B	C	D
RNP 0.11 DA		1131-¾	318 (400-¾)	
RNP 0.30 DA		1194-¾	381 (400-¾)	

**AUTHORIZATION REQUIRED**