

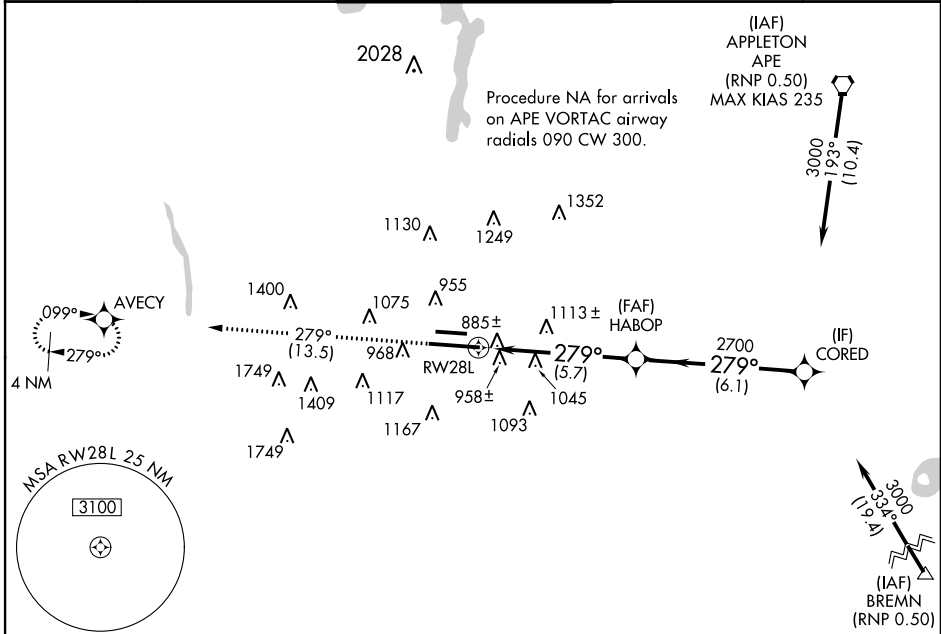
APP CRS <b>279°</b>	Rwy Idg TDZE Apt Elev	<b>10125</b> <b>814</b> <b>815</b>
------------------------	-----------------------------	--

# RNAV (RNP) Z RWY 28L

COLUMBUS/PORT COLUMBUS INTL (CMH)

<p><b>GPS required.</b> For uncompensated Baro-VNAV systems, procedure NA below -16°C (2°F) or above 47°C (117°F). For inop MALS, increase all visibilities ½ mile.</p>	<p><b>MALS</b></p>	<p><b>MISSED APPROACH:</b> Climb to 3200 on track 279° to AVECY and hold.</p>
---	--------------------	---

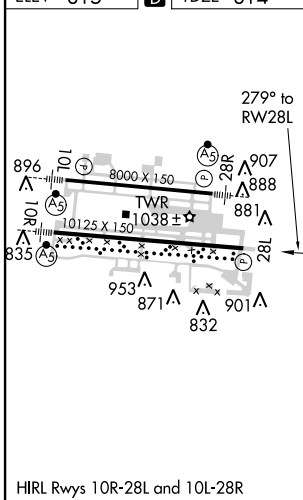
<p>ATIS <b>124.6</b></p>	<p>COLUMBUS APP CON <b>125.95 371.975</b></p>	<p>COLUMBUS TOWER <b>132.7 257.8</b></p>	<p>GND CON <b>121.9 348.6</b></p>	<p>CLNC DEL <b>126.3</b></p>
------------------------------	---	--	---------------------------------------	----------------------------------



EC-2, 07 FEB 2013 to 07 MAR 2013

EC-2, 07 FEB 2013 to 07 MAR 2013

ELEV 815	<b>D</b>	TDZE 814
----------	----------	----------



<p>3200</p> <p>↑</p> <p>tr 279°</p>	<p>AVECY</p>	<p>VGSI and RNAV glide-path not coincident (VGSI Angle 3.00/TCH 66).</p>	<p>CORED</p> <p>Procedure Turn NA</p>	
<p>HABOP</p> <p>2700</p>		<p>3000</p> <p>GP 3.00° TCH 52</p>		
<p>RW28L</p> <p>5.7 NM</p>		<p>6.1 NM</p>		
<p>CATEGORY</p>	A	B	C	D
RNP 0.15 DA		1144/40	330 (400-¾)	
RNP 0.20 DA		1196/40	382 (400-¾)	
RNP 0.30 DA		1293/60	497 (500-1¼)	

**AUTHORIZATION REQUIRED**