

APP CRS	Rwy Idg	10125
099°	TDZE	810
	Apt Elev	815

RNAV (RNP) Z RWY 10R

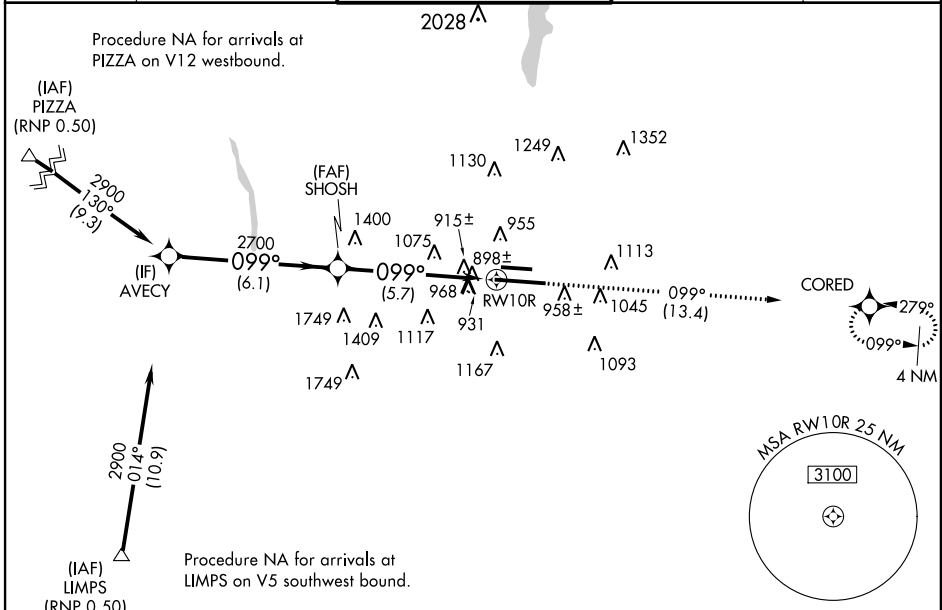
COLUMBUS/PORT COLUMBUS INTL (CMH)

▼ GPS required. For uncompensated Baro-VNAV systems, procedure NA below -16°C (2°F) or above 47°C (117°F). For inop MALS, increase RNP 0.22 all Cats visibility to RVR 6000 and RNP 0.30 all Cats visibility to 1/4. Simultaneous approach authorized with ILS or LOC Rwy 10L. Use of FD or AP providing RNAV track guidance required during simultaneous operations.
 * When VGSI inop, procedure NA at night.

MALS R

MISSED APPROACH: Climb to 3000 on track 099° to CORED and hold.

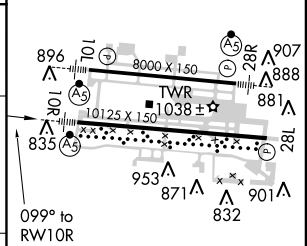
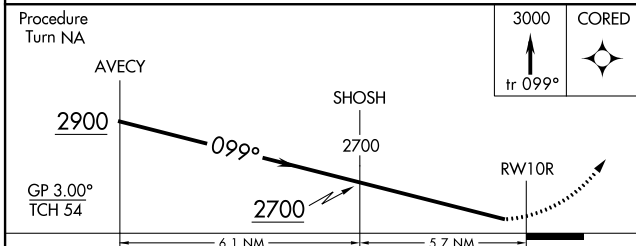
ATIS	COLUMBUS APP CON	COLUMBUS TOWER	GND CON	CLNC DEL
124.6	125.95 371.975	132.7 257.8	121.9 348.6	126.3



EC-2, 07 FEB 2013 to 07 MAR 2013

EC-2, 07 FEB 2013 to 07 MAR 2013

ELEV	815	D	TDZE	810
------	-----	----------	------	-----



CATEGORY	A	B	C	D
RNP 0.22 DA		1189/40	379 (400-3/4)	
*RNP 0.30 DA		1314/60	504 (500-1/4)	

AUTHORIZATION REQUIRED

HIRL Rwy 10R-28L and 10L-28R