


APP CRS	Rwy Idg	<b>8000</b>
<b>099°</b>	TDZE	<b>815</b>
	Apt Elev	<b>815</b>

# RNAV (RNP) Z RWY 10L

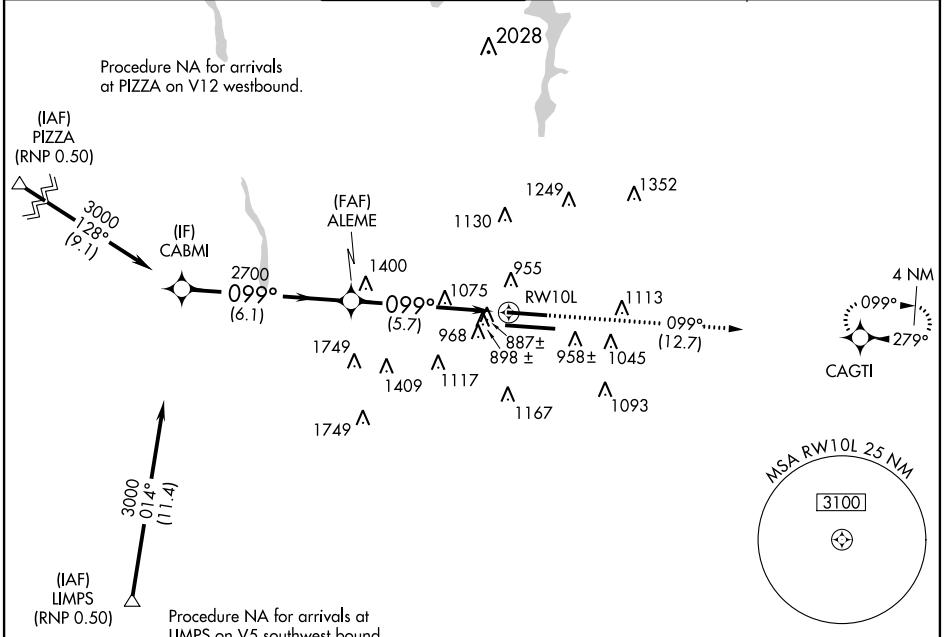
COLUMBUS/PORT COLUMBUS INTL (CMH)

**GPS Required.** For uncompensated Baro-VNAV systems, procedure NA below -16°C (1°F) or above 47°C (117°F). For inop MALSR, increase RNP 0.20 all Cats visibility to RVR 6000, and RNP 0.30 all Cats visibility to 1½.

**MALSR** 

**MISSED APPROACH:** Climb to 3000 on track 099° to CAGTI and hold.

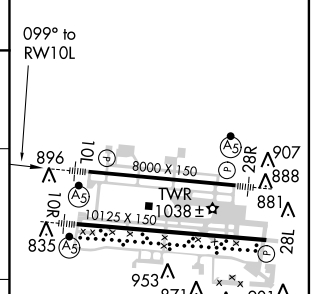
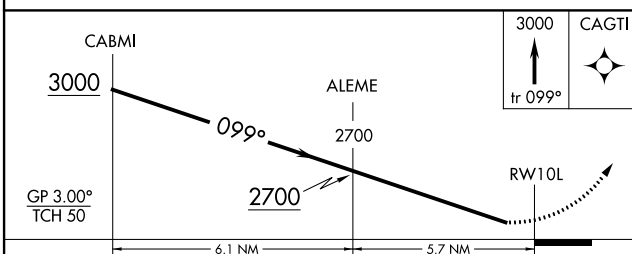
ATIS <b>124.6</b>	COLUMBUS APP CON <b>125.95 371.975</b>	COLUMBUS TOWER <b>132.7 257.8</b>	GND CON <b>121.9 348.6</b>	CLNC DEL <b>126.3</b>
----------------------	---	--------------------------------------	-------------------------------	--------------------------



EC-2, 07 FEB 2013 to 07 MAR 2013

EC-2, 07 FEB 2013 to 07 MAR 2013

ELEV	<b>815</b>	<b>D</b>	TDZE	<b>815</b>
------	------------	----------	------	------------



CATEGORY	A	B	C	D
RNP 0.20 DA		1164/40	349 (400-¾)	
RNP 0.30 DA		1216/50	401 (500-1)	

**AUTHORIZATION REQUIRED**

HIRL Rwy 10R-28L and 10L-28R