


LOC/DME I-AQI <b>108.7</b> Chan <b>24</b>	APP CRS <b>099°</b>	Rwy Idg <b>10125</b> TDZE <b>810</b> Apt Elev <b>815</b>
---	------------------------	--

# ILS or LOC RWY 10R

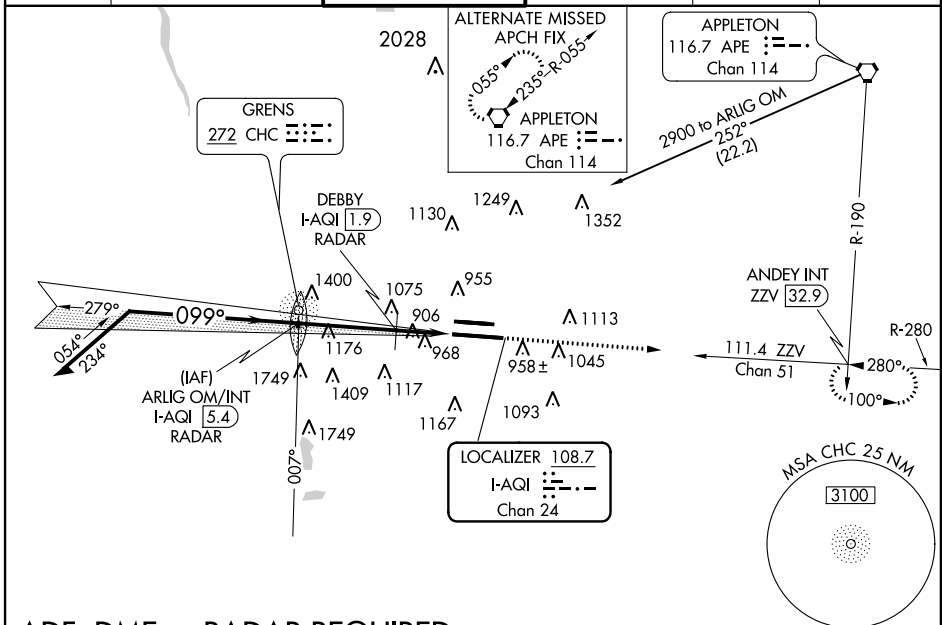
COLUMBUS/PORT COLUMBUS INTL (CMH)

**▼** If local altimeter not received, use Rickenbacker Intl altimeter setting and increase all DAs and MDAs 40 feet. Simultaneous approach authorized with ILS or LOC Rwy 10L.  
**▲** \*\* RVR 1800 authorized with the use of FD or AP or HUD to DA.

**MALSR** 

**MISSED APPROACH:** Climb to 3000 via ZVV R-280 to ANDEY Int/ZZV 32.9 DME and hold.

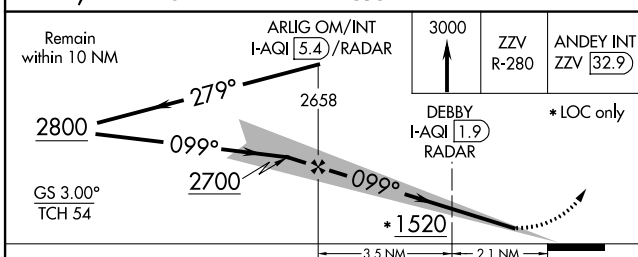
ATIS <b>124.6</b>	COLUMBUS APP CON <b>125.95 371.975</b>	COLUMBUS TOWER <b>132.7 257.8</b>	GND CON <b>121.9 348.6</b>	CLNC DEL <b>126.3</b>	UNICOM <b>122.95</b>
----------------------	---	--------------------------------------	-------------------------------	--------------------------	-------------------------



EC-2, 07 FEB 2013 to 07 MAR 2013

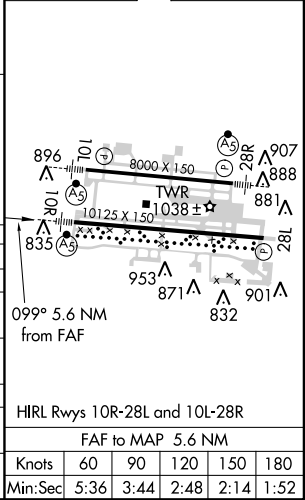
EC-2, 07 FEB 2013 to 07 MAR 2013

## ADF, DME or RADAR REQUIRED



ELEV 815	<b>D</b> TDZE 810
----------	-------------------

CATEGORY	A	B	C	D
S-ILS 10R	**1010/24 200 (200-½)			
S-LOC 10R	1520/24	710 (800-½)	1520-1½ 710 (800-1½)	1520-1¾ 710 (800-1¾)
CIRCLING	1520-1	705 (800-1)	1520-2 705 (800-2)	1520-2¼ 705 (800-2¼)
DEBBY FIX MINIMUMS				
S-LOC 10R	1220/24	410 (500-½)	1220/40	410 (500-¾)
CIRCLING	1340-1	525 (600-1)	1340-1½ 525 (600-1½)	1380-2 565 (600-2)



Knots	60	90	120	150	180
Min:Sec	5:36	3:44	2:48	2:14	1:52