

COLUMBUS, MISSISSIPPI

VOR/DME or TACAN RWY 31R

VORTAC CBM 115.2 Chan 99	APCH CRS 302°	Rwy Idg THRE Arpt Elev 8001 213 218
--	-------------------------	---

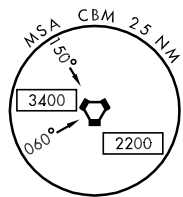
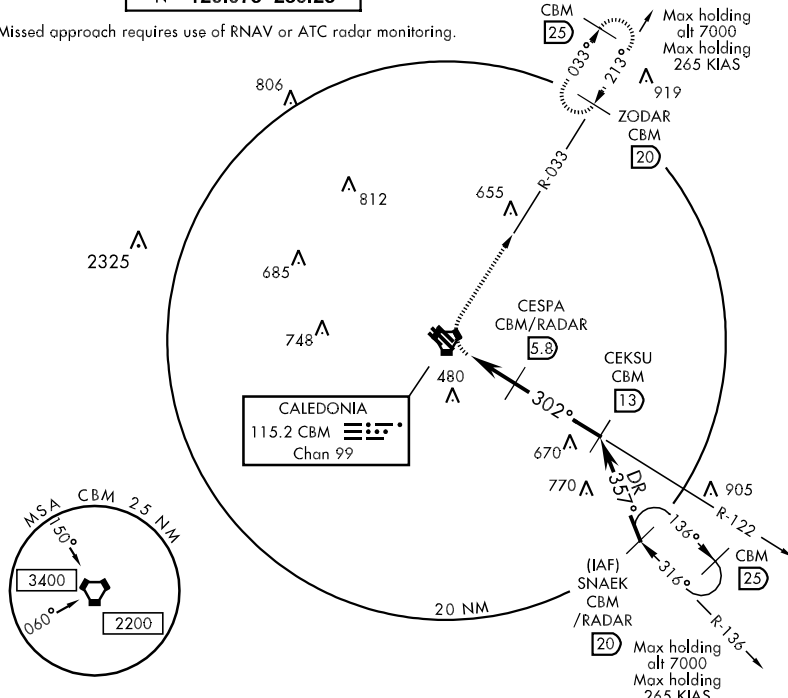
AL-91 [USAF]

COLUMBUS AFB (KCBM)

MISSED APPROACH: Climbing right turn to intercept the CBM R-033 outbound to ZODAR (CBM R-033/20) and hold. Maintain 4000.

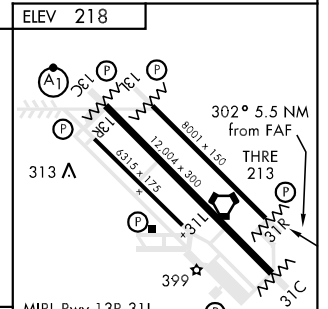
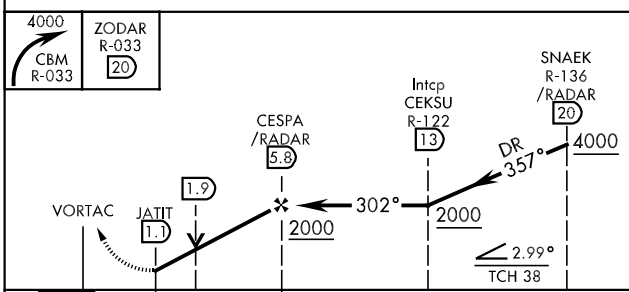
ATIS 115.2 273.5	COLUMBUS APP CON SE 132.025 291.65 SW 135.6 323.275 N 126.075 239.25	COLUMBUS TOWER 126.65 379.925	GND CON 121.9 275.8	CLNC DEL 269.55
----------------------------	--	---	-------------------------------	---------------------------

Missed approach requires use of RNAV or ATC radar monitoring.



RADAR REQUIRED

EMERG SAFE ALT 100 NM 3700



CATEGORY	A	B	C	D	E
S-31R	780/55 567 (600-1)		780-1 $\frac{3}{8}$ 567 (600-1 $\frac{3}{8}$)		
CIRCLING	840-1 622 (700-1)		840-1 $\frac{3}{4}$ 622 (700-1 $\frac{3}{4}$)	840-2 622 (700-2)	1300-3 1082 (1100-3)

FAF to MAP 4.7 NM					
Knots	60	90	120	150	180
Min:Sec	4:42	3:08	2:21	1:53	1:34

COLUMBUS, MISSISSIPPI
Amdt 3 11237

33°39'N-88°27'W

COLUMBUS AFB (KCBM)

VOR/DME or TACAN RWY 31R

SC-4, 07 FEB 2013 to 07 MAR 2013

SC-4, 07 FEB 2013 to 07 MAR 2013