

COLUMBUS, MISSISSIPPI

VOR/DME or TACAN RWY 31C

VORTAC CBM 115.2 Chan 99	APCH CRS 317°	Rwy Idg THRE 12,004 Arpt Elev 218
--	-------------------------	---

AL-91 [USAF]

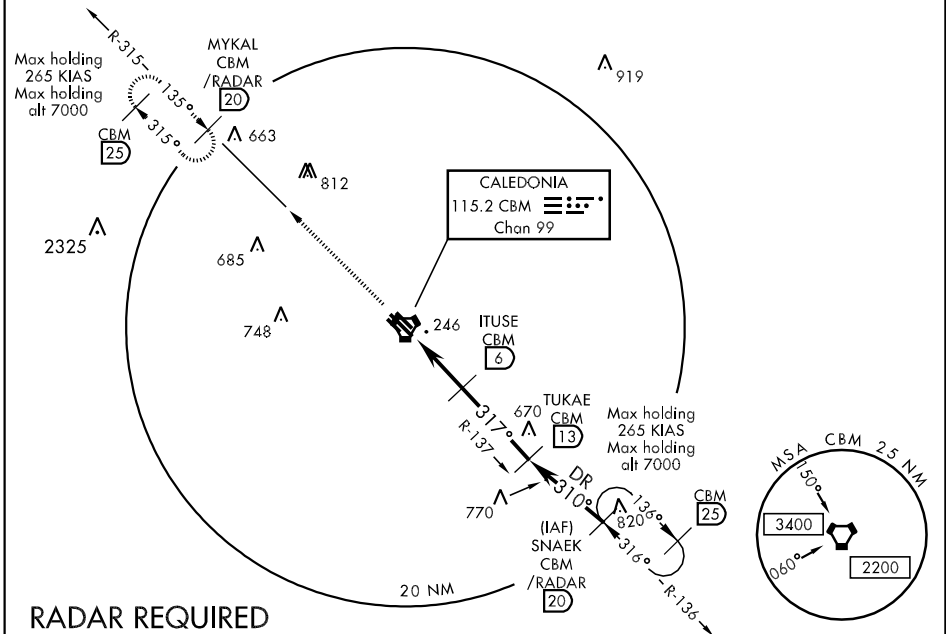
COLUMBUS AFB (KCBM)

⚠ * When ALS inop, increase CAT AB RVR to 55 and vis to 1 mile, CAT CDE vis to 1 1/2 miles.



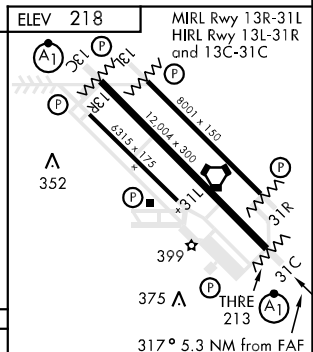
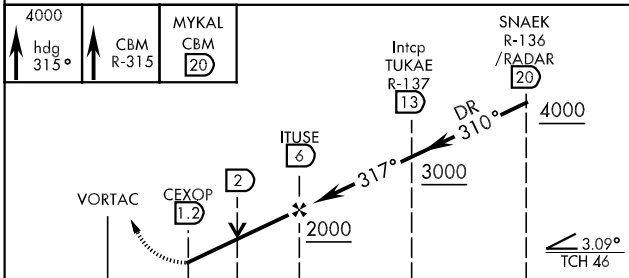
MISSED APPROACH: Climb heading 315° to intercept the CBM R-315 outbound to MYKAL (CBM R-315/20) and hold. Maintain 4000.

ATIS 115.2 273.5	COLUMBUS APP CON SE 132.025 291.65 SW 135.6 323.275 N 126.075 239.25	COLUMBUS TOWER 126.65 379.925	GND CON 121.9 275.8	CLNC DEL 269.55
----------------------------	--	---	-------------------------------	---------------------------



RADAR REQUIRED

EMERG SAFE ALT 100 NM 3700



CATEGORY	A	B	C	D	E
S-31C *	660/24 447 (500-1/2)		660/45 447 (500-7/8)		
CIRCLING	840-1 622 (700-1)		840-1 3/4 622 (700-1 3/4)	840-2 622 (700-2)	1300-3 082 (1100-3)

FAF to MAP 4.8 NM					
Knots	60	90	120	150	180
Min:Sec	4:48	3:12	2:24	1:55	1:36

COLUMBUS, MISSISSIPPI
Amdt 5 11097

33°39'N-88°27'W

COLUMBUS AFB (KCBM)

VOR/DME or TACAN RWY 31C

SC-4, 07 FEB 2013 to 07 MAR 2013

SC-4, 07 FEB 2013 to 07 MAR 2013