

COLUMBUS, MISSISSIPPI

VOR/DME or TACAN RWY 13L

VORTAC CBM 115.2 Chan 99	APCH CRS 142°	Rwy Idg THRE 8001 193 Arpt Elev 218
--	-------------------------	--

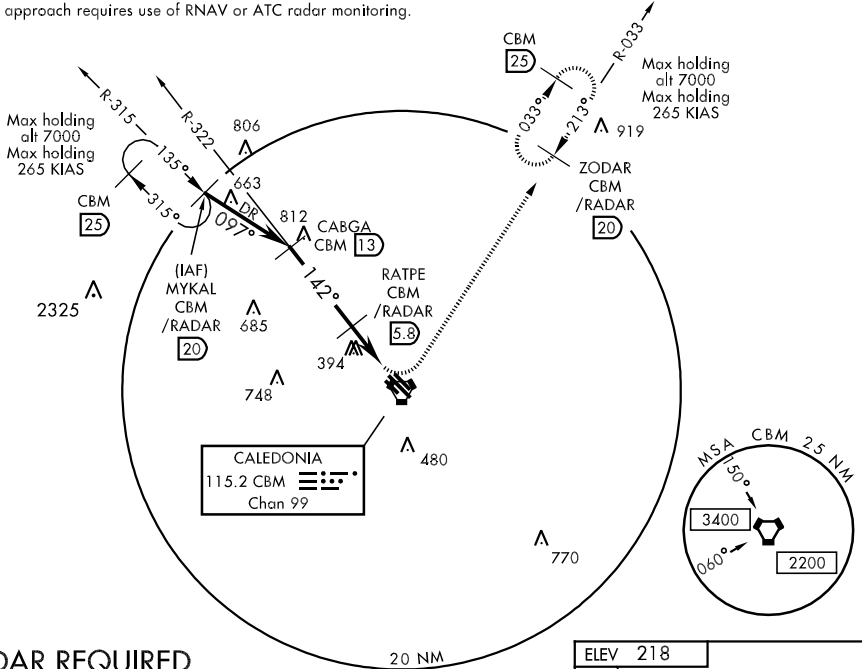
AL-91 [USAF]

COLUMBUS AFB (KCBM)

MISSED APPROACH: Climbing left turn to intercept the CBM R-033 outbound to ZODAR (CBM R-033/20) and hold. Maintain 4000.

ATIS 115.2 273.5	COLUMBUS APP CON SE 132.025 291.65 SW 135.6 323.275 N 126.075 239.25	COLUMBUS TOWER 126.65 379.925	GND CON 121.9 275.8	CLNC DEL 269.55
----------------------------	--	---	-------------------------------	---------------------------

Missed approach requires use of RNAV or ATC radar monitoring.

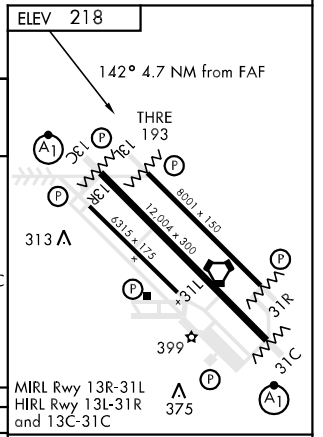
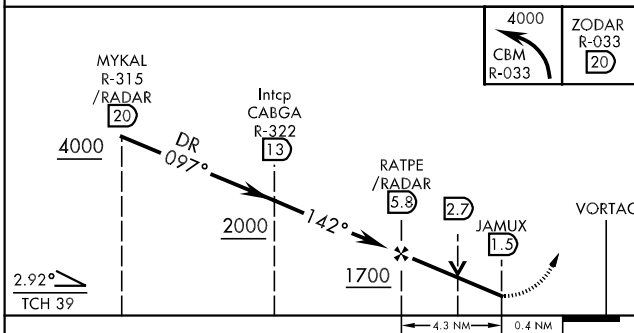


SC-4, 07 FEB 2013 to 07 MAR 2013

SC-4, 07 FEB 2013 to 07 MAR 2013

RADAR REQUIRED

EMERG SAFE ALT 100 NM 3700



CATEGORY	A	B	C	D	E
S-13L	740/55 547 (600-1)		740-1 $\frac{5}{8}$ 547 (600-1 $\frac{5}{8}$)		
CIRCLING	840-1 622 (700-1)		840-1 $\frac{3}{4}$ 622 (700-1 $\frac{3}{4}$)	840-2 622 (700-2)	1300-3 1082 (1100-3)

FAF to MAP 4.3 NM					
Knots	60	90	120	150	180
Min:Sec	4:18	2:52	2:09	1:43	1:26

COLUMBUS, MISSISSIPPI
Amdt 2 11237

33°39'N-88°27'W

COLUMBUS AFB (KCBM)

VOR/DME or TACAN RWY 13L