

VORTAC CBM <b>115.2</b> Chan <b>99</b>	APCH CRS <b>133°</b>	Rwy Idg <b>12,004</b> THRE <b>192</b> Arpt Elev <b>218</b>
--	-------------------------	--

AL-91 [USAF]

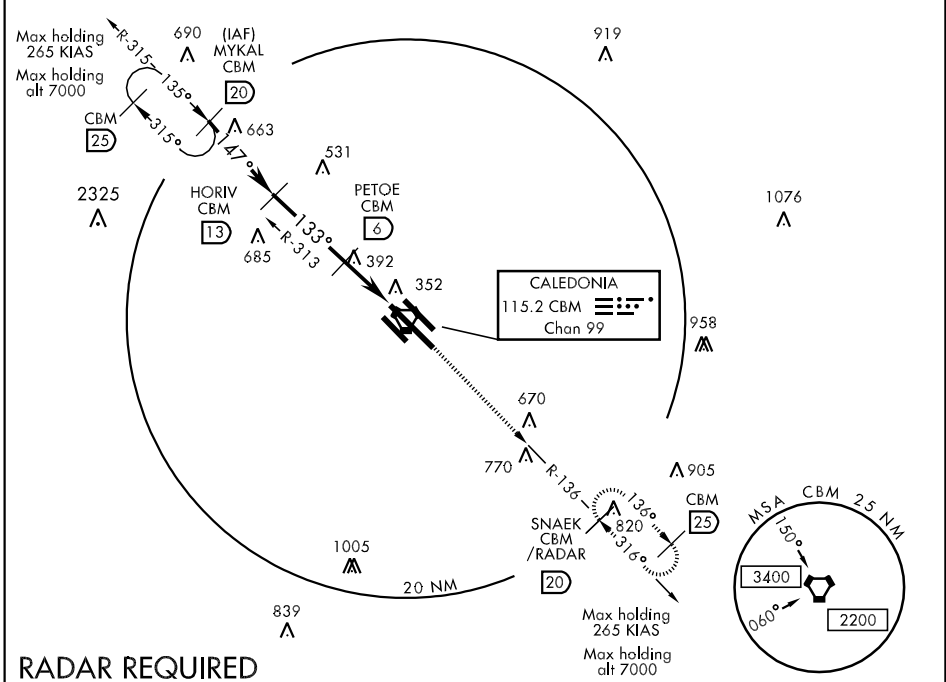
COLUMBUS AFB (KCBM)

▲ \*When ALS inop, increase CAT AB RVR to 55 and vis to 1 mile, CAT CDE vis to 1½ miles.



MISSED APPROACH: Climb heading 135° to intercept the CBM R-136 outbound to SNAEK (CBM R-136/20) and hold. Maintain 4000.

ATIS <b>115.2 273.5</b>	COLUMBUS APP CON SE <b>132.025 291.65</b> SW <b>135.6 323.275</b> N <b>126.075 239.25</b>	COLUMBUS TOWER <b>126.65 379.925</b>	GND CON <b>121.9 275.8</b>	CLNC DEL <b>269.55</b>
----------------------------	--	---	-------------------------------	---------------------------

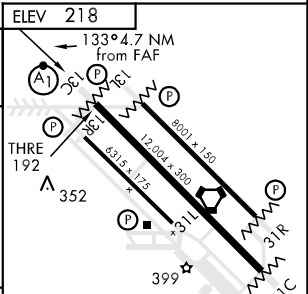
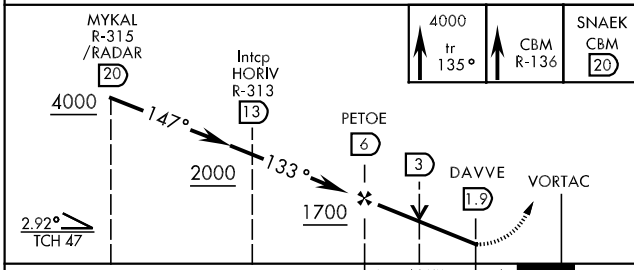


SC-4, 07 FEB 2013 to 07 MAR 2013

SC-4, 07 FEB 2013 to 07 MAR 2013

## RADAR REQUIRED

EMERG SAFE ALT 100 NM 3700



CATEGORY	A	B	C	D	E
S-13C *	780/40 588 (600-¾)		780-1¼ 588 (600-1¼)		
CIRCLING	840-1 622 (700-1)		840-1¾ 622 (700-1¾)	840-2 622 (700-2)	1300-3 082 (1100-3)

FAF to MAP 4.1 NM						
Knots	60	90	120	150	180	200
Min:Sec	4:06	2:44	2:03	1:38	1:22	1:14