

COLUMBUS, MISSISSIPPI

ILS or LOC/DME RWY 31C

LOC I-TBB 108.7	APCH CRS 315°	Rwy Idg THRE Arprt Elev 31C 12,004 31R 8,001 213 213 218	AL-91 [USAF]	COLUMBUS AFB (KCBM)
---------------------------	-------------------------	--	--------------	---------------------

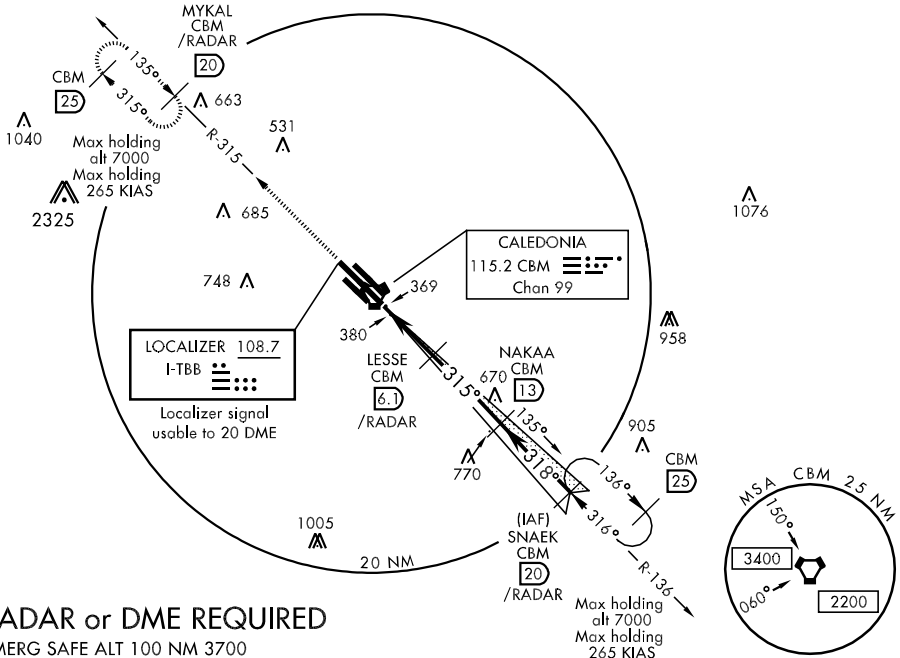
▼ * When ALS inop, incr CAT ABCDE RVR to 40 and vis to ¼ mile.
▼ ** When ALS inop, increase CAT AB RVR to 55 and vis to 1 mile, CAT CDE vis to 1¼ miles.



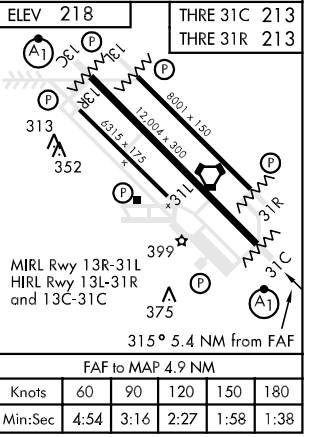
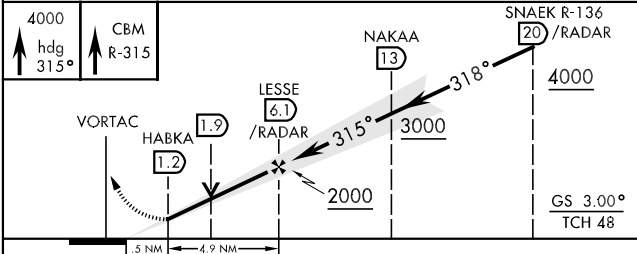
MISSED APPROACH: Climb heading 315° to intercept the CBM R-315 outbound to MYKAL (CBM R-315/20) and hold. Maintain 4000.

ATIS 115.2 273.5	COLUMBUS APP CON SE 132.025 291.65 SW 135.6 323.275 N 126.075 239.25	COLUMBUS TOWER 126.65 379.925	GND CON 121.9 275.8	CLNC DEL 269.55
----------------------------	--	---	-------------------------------	---------------------------

*** CAUTION: Runway centerlines separated by 1450 ft.



RADAR or DME REQUIRED
EMERG SAFE ALT 100 NM 3700



CATEGORY	A	B	C	D	E
S-ILS 31C *	413/24		200 (200-½)		
S-LOC 31C **	640/24	427 (500-½)	640/40	427 (500-¾)	
SIDESTEP *** RWY 31R	640/55	427 (500-1)	640-1¼	427 (500-1¼)	
CIRCLING	840-1	622 (700-1)	840-1¾ 622 (700-1¾)	880-2 662 (700-2)	1300-3 1082 (1100-3)

COLUMBUS, MISSISSIPPI 33°39'N-88°27'W COLUMBUS AFB (KCBM)

Amdt 7 17NOV11

ILS or LOC/DME RWY 31C

SC-4, 07 FEB 2013 to 07 MAR 2013

SC-4, 07 FEB 2013 to 07 MAR 2013