

COLUMBUS, MISSISSIPPI

# ILS or LOC/DME RWY 13C

LOC I-CBM <b>109.3</b>	APCH CRS <b>135°</b>	Rwy Idg THRE <b>192</b> ARPT Elev <b>218</b>	13C <b>12,004</b>	13L <b>8001</b>
---------------------------	-------------------------	--	----------------------	--------------------

AL-91 [USAF]

COLUMBUS AFB (KCBM)

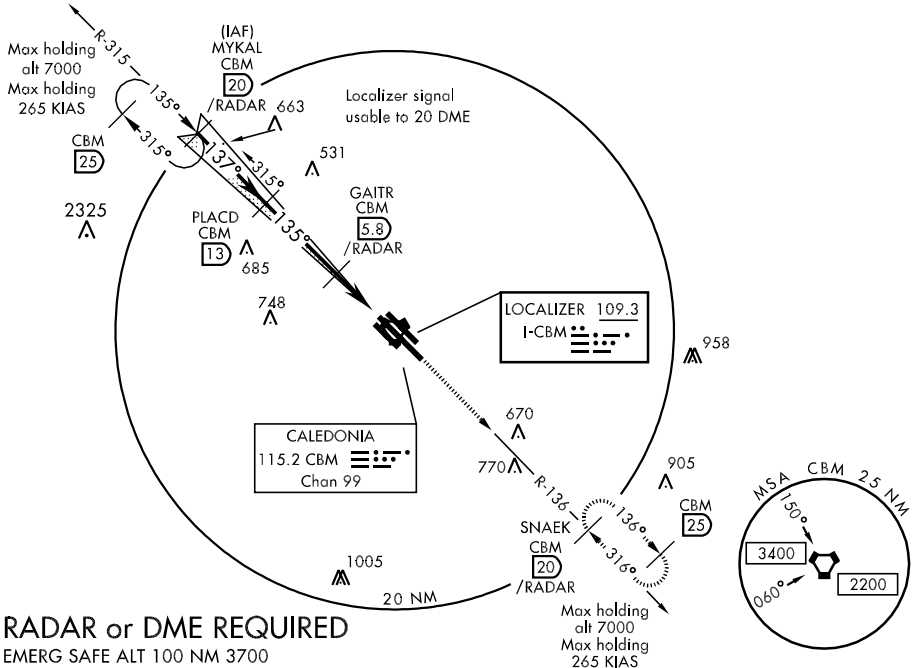
**▼** \* When ALS inop, increase RVR to 40 and vis to ¼ mile.  
 \*\* When ALS inop, increase CAT AB RVR to 55 and vis to 1 mile, CAT CDE vis to 1½ miles.



MISSED APPROACH: Climb heading 135° to intercept the CBM R-136 outbound to SNAEK (CBM R-136/20) and hold. Maintain 4000.

ATIS <b>115.2 273.5</b>	COLUMBUS APP CON SE <b>132.025 291.65</b> SW <b>135.6 323.275</b> N <b>126.075 239.25</b>	COLUMBUS TOWER <b>126.65 379.925</b>	GND CON <b>121.9 275.8</b>	CLNC DEL <b>269.55</b>
----------------------------	--	---	-------------------------------	---------------------------

\*\*\* CAUTION: Runway centerlines separated by 1450 ft.



## RADAR or DME REQUIRED

EMERG SAFE ALT 100 NM 3700

MYKAL R-315 20/RADAR 4000 GS 3.00° TCH 49	PLACD 13 2000	GAITR 5.8/RADAR 1700	JAKAD 1.8 2.9	VORTAC 4.0 NM	ELEV 218 hdg 135° CBM R-136 135° 4.5 NM from FAF	
S-ILS 13C *	392/24		200	(200-½)	MRL Rwy 13R-31L HRL Rwy 13L-31R and 13C-31C	FAF to MAP 4.0 NM Knots: 60 90 120 150 180 Min:Sec: 4:00 2:40 2:00 1:36 1:20
S-LOC 13C **	740/40	548 (600-¾)	740/60	548 (600-1½)		
SIDESTEP *** RWY 13L	740/55	547 (600-1)	740-1½	547 (600-1½)		
CIRCLING	840-1	622 (700-1)	840-1¾ 622 (700-1¾)	840-2 622 (700-2)	1300-3 1082 (1100-3)	

COLUMBUS, MISSISSIPPI  
Amdt 4 11237

33°39'N-88°27'W

COLUMBUS AFB (KCBM)

# ILS or LOC/DME RWY 13C

SC-4, 07 FEB 2013 to 07 MAR 2013

SC-4, 07 FEB 2013 to 07 MAR 2013