

HI-ILS or LOC/DME RWY 31C

LOC I-TBB 108.7	APCH CRS 315°	Rwy Idg 31C	12,004	31R	8,001
		THRE	31C	31R	213
		Arpt Elev	218		

JAL-91 [USAF]

COLUMBUS AFB (KCBM)

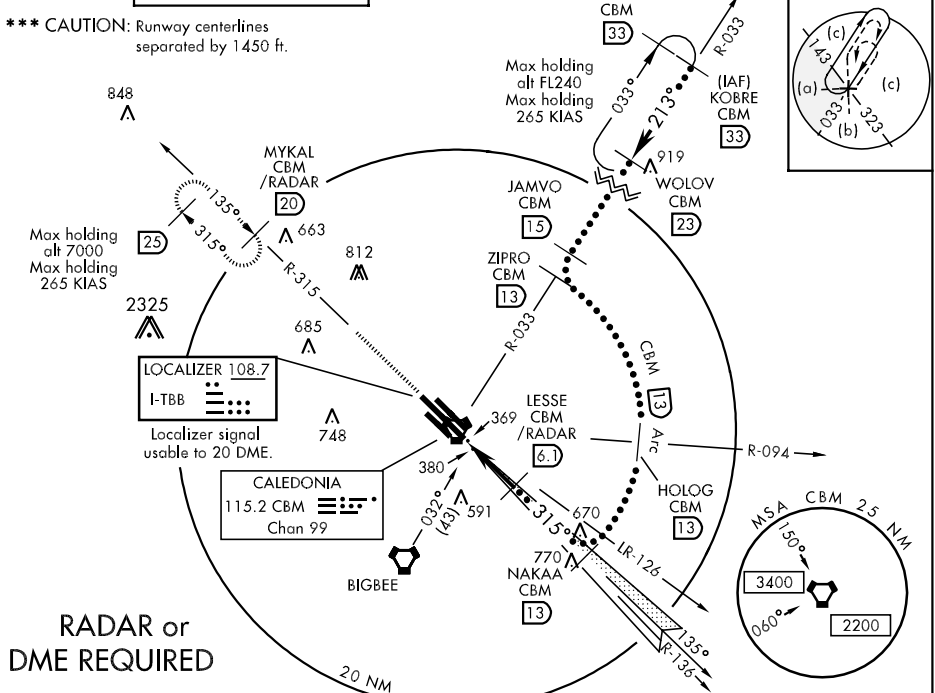
▼ * When ALS inop, increase CAT CDE RVR to 40 and vis to 3/4 mile.
 ** When ALS inop, increase CAT CDE vis to 1 1/4 miles.



MISSED APPROACH: Climb heading 315° to intercept the CBM R-315 outbound to MYKAL (CBM R-315/20) and hold. Maintain 4000.

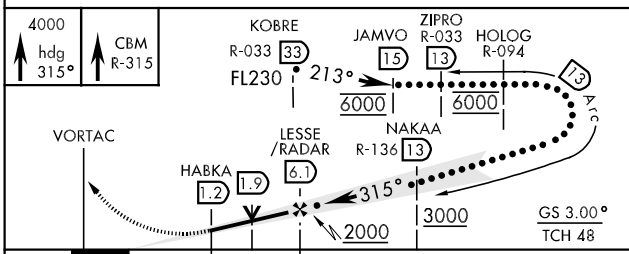
ATIS 115.2 273.5	COLUMBUS APP CON SE 132.025 291.65 SW 135.6 323.275 N 126.075 239.25	COLUMBUS TOWER 126.65 379.925	GND CON 121.9 275.8	CLNC DEL 269.55
----------------------------	--	---	-------------------------------	---------------------------

*** CAUTION: Runway centerlines separated by 1450 ft.



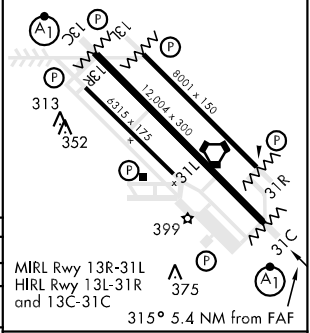
RADAR or DME REQUIRED

EMERG SAFE ALT 100 NM 3700



CATEGORY	C	D	E
S-ILS 31C *	413/24	200	(200-1/2)
S-LOC 31C **	640/40	427	(500-3/4)
SIDESTEP *** RWY 31R	640-1 1/4	427	(500-1/4)
CIRCLING	840-1 3/4 622 (700-1 3/4)	880-2 662 (700-2)	1300-3 1082 (1100-3)

ELEV 218	THRE 31C 213	THRE 31R 213
----------	--------------	--------------



FAF to MAP 4.9 NM					
Knots	120	140	160	180	200
Min:Sec	2:27	2:06	1:50	1:38	1:28

HI-ILS or LOC/DME RWY 31C

SC-4, 07 FEB 2013 to 07 MAR 2013

SC-4, 07 FEB 2013 to 07 MAR 2013