

ATIS 115.2 273.5  
 CLNC DEL  
 126.25 269.55  
 GND CON  
 121.9 275.8  
 COLUMBUS TOWER  
 126.65 379.925  
 COLUMBUS DEP CON  
 132.025 291.65

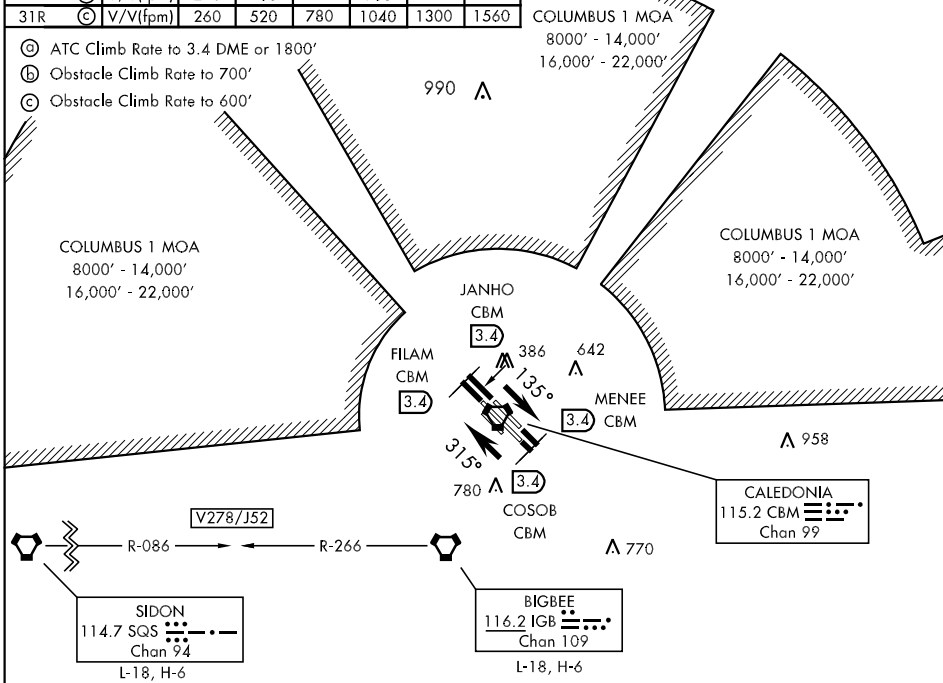
**HOLLY SPRINGS**  
 112.4 HLI  
 Chan 71

**RADAR REQUIRED**

**HAMILTON**  
 110.4 HAB  
 Chan 41  
 L-18

Rwy	Knots	60	120	180	240	300	360
13C/L (C)	V/V(fpm)	590	1180	1770	2360	2940	3530
31C/R (C)	V/V(fpm)	770	1530	2290	3050	3810	4570
13C (b)	V/V(fpm)	220	440	660	880	1100	1320
13L (b)	V/V(fpm)	240	480	720	960	1200	1440
31C (C)	V/V(fpm)	240	480	720	960	1200	1440
31R (C)	V/V(fpm)	260	520	780	1040	1300	1560

- (C) ATC Climb Rate to 3.4 DME or 1800'
- (b) Obstacle Climb Rate to 700'
- (C) Obstacle Climb Rate to 600'



SC-4, 07 FEB 2013 to 07 MAR 2013

SC-4, 07 FEB 2013 to 07 MAR 2013

**DEPARTURE ROUTE DESCRIPTION**

NOTE: Rwy 13/31C departure will be towards a raised MA-1A barrier approximately 110' into the overrun and 4' high.

**TAKE-OFF RWY 13C:** Climb on heading 135° to intercept CBM R-138, direct COSOB (CBM R-138/3.4 DME). Cross COSOB at or above 1800', then via ATC instructions.

**TAKE-OFF RWY 13L:** Climb on heading 135° to intercept CBM R-132, direct MENE (CBM R-132/3.4 DME). Cross MENE at or above 1800', then via ATC instructions.

**TAKE-OFF RWY 31C:** Climb on heading 315° to intercept CBM R-312, direct FILAM (CBM R-312/3.4 DME). Cross FILAM at or above 1800', then via ATC instructions.

**TAKE-OFF RWY 31R:** Climb heading 315° to intercept CBM R-318, direct JANHO (CBM R-318/3.4 DME). Cross JANHO at or above 1800', then via ATC instructions.