

RNAV (GPS) RWY 5

COLUMBIA METROPOLITAN (CAE)

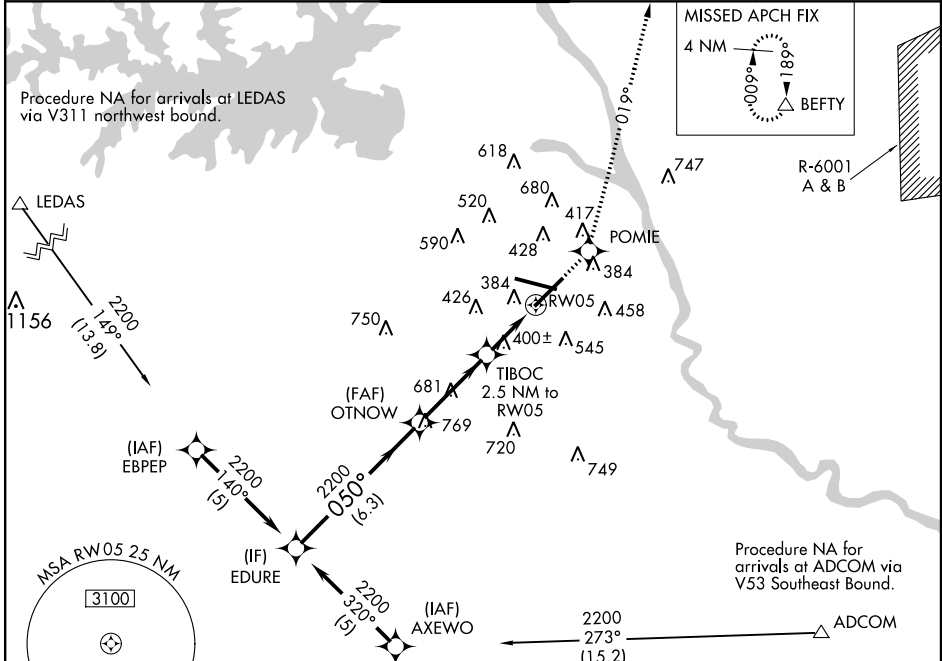
WAAS CH 45526 W05A	APP CRS 050°	Rwy ldg TDZE Apt Elev	7001 228 236
--	------------------------	-----------------------------	---

ASR For uncompensated Baro-VNAV systems, LNAV/VNAV NA below -15°C (5°F) or above 48°C (118°F). DME/DME RNP-0.3 NA.

MALSR

MISSED APPROACH: Climb to 2400 direct POMIE and via track 019° to BEFTY and hold.

ATIS 120.15	COLUMBIA APP CON 133.4 285.6 (290°-109°) 124.15 338.2 (110°-289°)	COLUMBIA TOWER 119.5 257.8	GND CON 121.9 348.6	CLNC DEL 119.75
-----------------------	---	--------------------------------------	-------------------------------	---------------------------



Procedure Turn NA

EDURE

OTNOW

TIBOC 2.5 NM to RW05

POMIE

BEFTY

track 019°

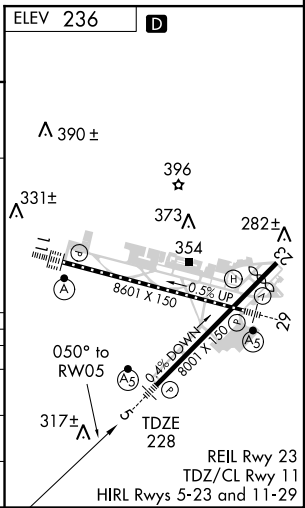
*LNAV only.

GS 3.00° TCH 60

2200 — 050° — 2200

6.3 NM — 3.4 NM — 1.2 NM — 1.3 NM

CATEGORY	A	B	C	D
LPV DA		428/24	200 (200-½)	
LNAV/VNAV DA		638/50	410 (500-1)	
LNAV MDA	700/24	472 (500-½)	700/40 472 (500-¾)	700/50 472 (500-1)
CIRCLING	740-1	504 (600-1)	840-1¾ 604 (700-1¾)	880-2 644 (700-2)



SE-2, 07 FEB 2013 to 07 MAR 2013

SE-2, 07 FEB 2013 to 07 MAR 2013