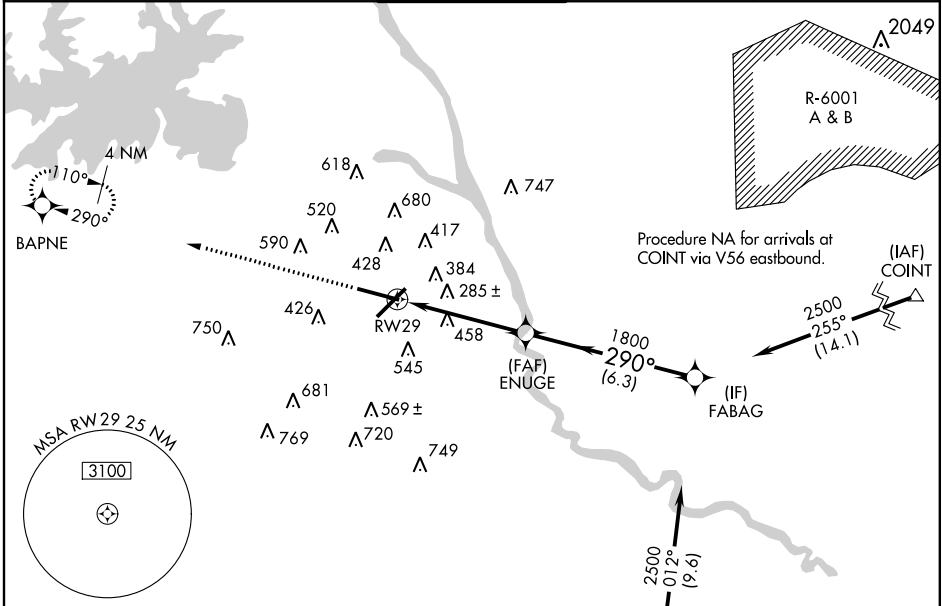


WAAS CH <b>53414</b> <b>W29A</b>	APP CRS <b>290°</b>	Rwy Idg TDZE Apt Elev	<b>8506</b> <b>227</b> <b>236</b>
--	------------------------	-----------------------------	---

# RNAV (GPS) RWY 29

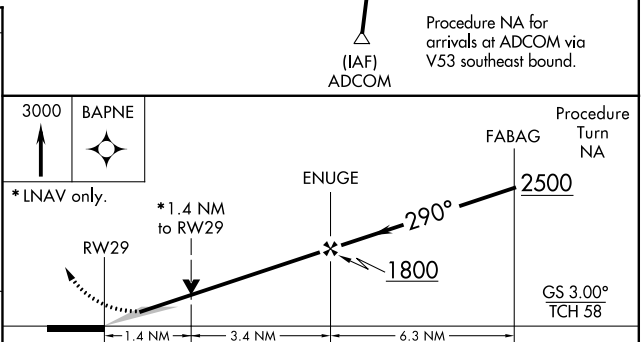
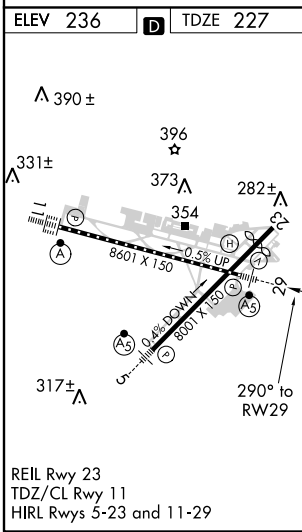
COLUMBIA METROPOLITAN (CAE)

<p>▼ For inoperative MALSR, increase LNAV/VNAV Cat D visibility to RVR 5000.</p> <p>ASR For uncompensated Baro-VNAV systems, LNAV/VNAV NA below -15°C (5°F) or above 48°C (118°F). DME/DME RNP-0.3 NA.</p>		<p>MALSR</p>	<p>MISSED APPROACH: Climb to 3000 direct BAPNE and hold.</p>	
<p>ATIS</p> <p><b>120.15</b></p>	<p>COLUMBIA APP CON</p> <p><b>133.4 285.6</b> (290°-109°) <b>124.15 338.2</b> (110°-289°)</p>	<p>COLUMBIA TOWER</p> <p><b>119.5 257.8</b></p>	<p>GND CON</p> <p><b>121.9 348.6</b></p>	<p>CLNC DEL</p> <p><b>119.75</b></p>



SE-2, 07 FEB 2013 to 07 MAR 2013

SE-2, 07 FEB 2013 to 07 MAR 2013



CATEGORY	A	B	C	D
LPV DA	427/24 200 (200-½)			
LNAV/VNAV DA	544/24		317 (400-½)	
LNAV MDA	720/24	493 (500-½)		720/40
CIRCLING	740-1	504 (600-1)		880-2
		604 (700-1¾)		644 (700-2)