

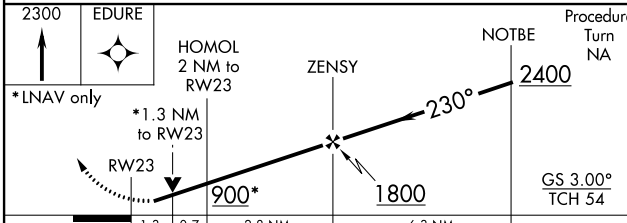
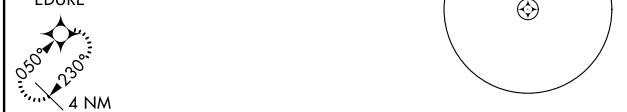
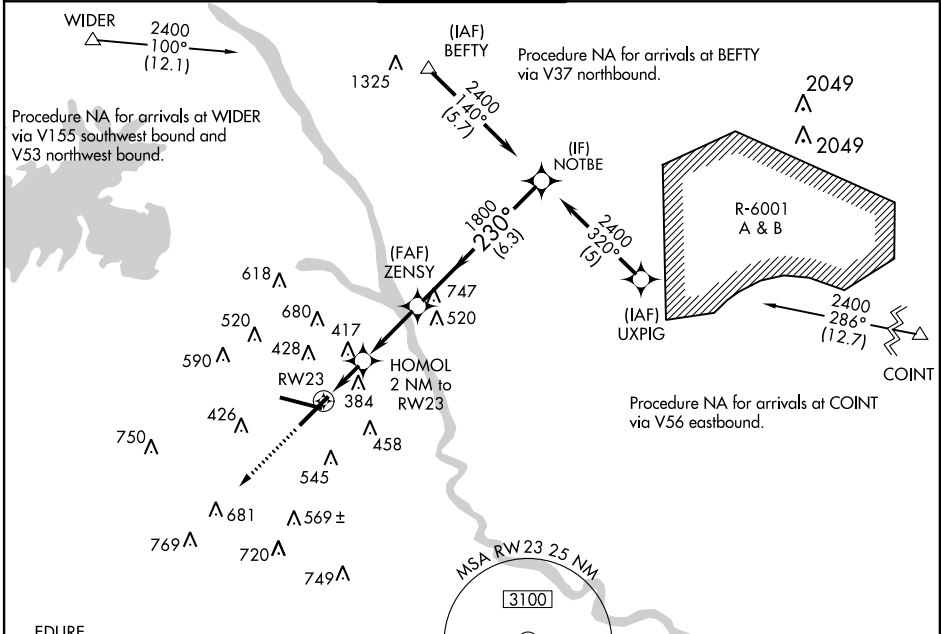
WAAS CH <b>40026</b> <b>W23A</b>	APP CRS <b>230°</b>	Rwy Idg TDZE Apt Elev	<b>6921</b> <b>213</b> <b>236</b>
--	------------------------	-----------------------------	---

# RNAV (GPS) RWY 23

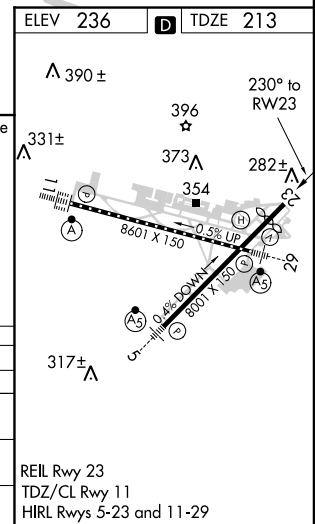
COLUMBIA METROPOLITAN (CAE)

<b>ASR</b>	For uncompensated Baro-VNAV systems, LNAV/VNAV NA below -15°C (5°F) or above 48°C (118°F). DME/DME RNP-0.3 NA. Visibility reduction by helicopters NA.	MISSED APPROACH: Climb to 2300 direct EDURE and hold.	
------------	---	---	--

ATIS <b>120.15</b>	COLUMBIA APP CON <b>133.4 285.6</b> (290°-109°) <b>124.15 338.2</b> (110°-289°)	COLUMBIA TOWER <b>119.5 257.8</b>	GND CON <b>121.9 348.6</b>	CLNC DEL <b>119.75</b>
-----------------------	---	--------------------------------------	-------------------------------	---------------------------



CATEGORY	A	B	C	D
LPV DA	503/50		290 (300-1)	
LNAV/VNAV DA	699-1¾		486 (500-1¾)	
LNAV MDA	680/50	467 (500-1)	680/60 467 (500-1¼)	680-1½ 467 (500-1½)
CIRCLING	740-1	504 (600-1)	840-1¾ 604 (700-1¾)	880-2 644 (700-2)



SE-2, 07 FEB 2013 to 07 MAR 2013

SE-2, 07 FEB 2013 to 07 MAR 2013