

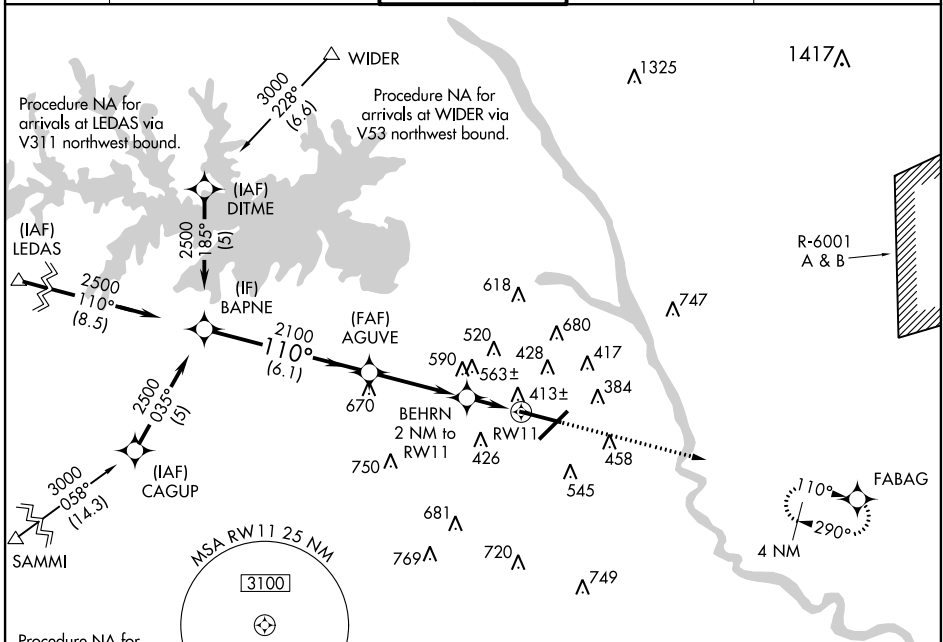
WAAS CH <b>61014</b> <b>W11A</b>	APP CRS <b>110°</b>	Rwy Idg <b>8601</b> TDZE <b>236</b> Apt Elev <b>236</b>
--	------------------------	---

# RNAV (GPS) RWY 11

COLUMBIA METROPOLITAN (CAE)

For uncompensated Baro-VNAV systems, LNAV/VNAV NA below -1.5°C (5°F) or above 48°C (118°F). DME/DME RNP-0.3 NA.		MISSED APPROACH: Climb to 3000 direct FABAG and hold.

ATIS <b>120.15</b>	COLUMBIA APP CON <b>133.4 285.6</b> (290°-109°) <b>124.15 338.2</b> (110°-289°)	COLUMBIA TOWER <b>119.5 257.8</b>	GND CON <b>121.9 348.6</b>	CLNC DEL <b>119.75</b>
-----------------------	---	--------------------------------------	-------------------------------	---------------------------



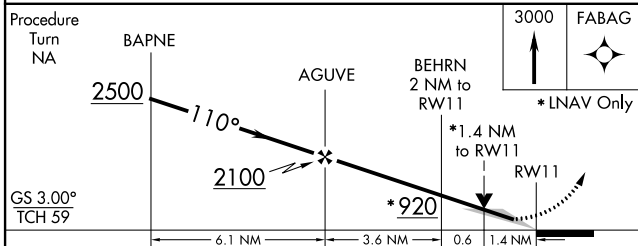
SE-2, 07 FEB 2013 to 07 MAR 2013

SE-2, 07 FEB 2013 to 07 MAR 2013

Procedure NA for arrivals at LEDAS via V311 northwest bound.

Procedure NA for arrivals at WIDER via V53 northwest bound.

Procedure NA for arrivals at SAMMI via V56 westbound.



CATEGORY	A	B	C	D
LPV DA		436/24	200 (200-1/2)	
LNAV/VNAV DA		744/60	508 (600-1 1/4)	
LNAV MDA	740/24	504 (600-1/2)	740/50	504 (600-1)
CIRCLING	740-1	504 (600-1)	840-1 3/4 604 (700-1 3/4)	880-2 644 (700-2)

