

WAAS CH 53602 W 35B	APP CRS 351°	Rwy Idg 13501 TDZE 6118 Apt Elev 6187
---	------------------------	--

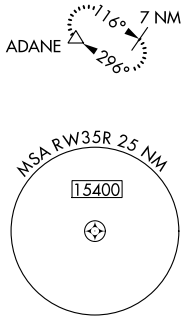
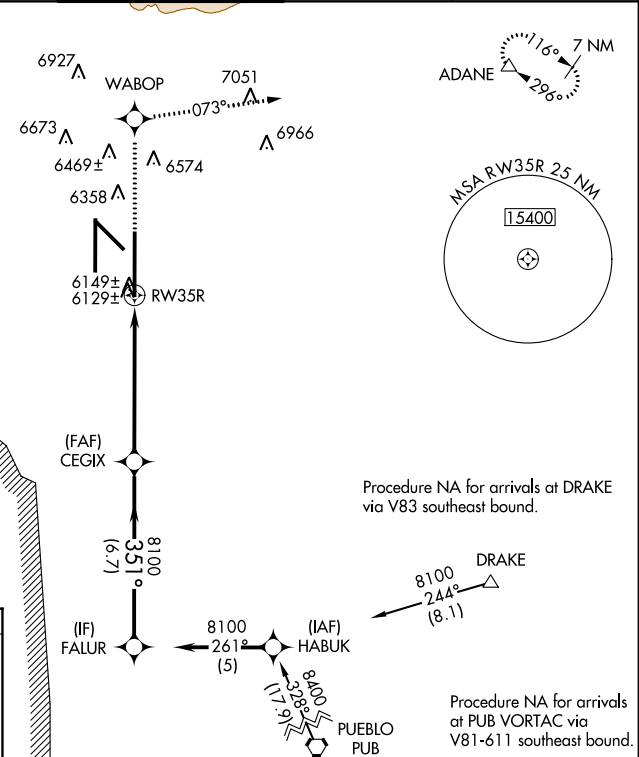
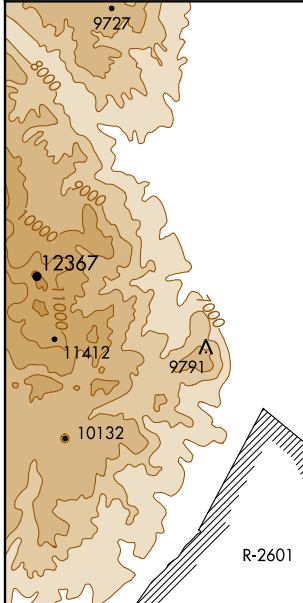
RNAV (GPS) Y RWY 35R

COLORADO SPRINGS/CITY OF COLORADO SPRINGS MUNI (COS)

▽ For uncompensated Baro-VNAV systems, LNAV/VNAV NA below -27°C (-16°F) or above 36°C (96°F).
DME/DME RNP -0.3 NA.
RADAR monitoring required when R-2601 in use.

MISSED APPROACH: Climb to 9000 direct WABOP and on track 073° to ADANE and hold.

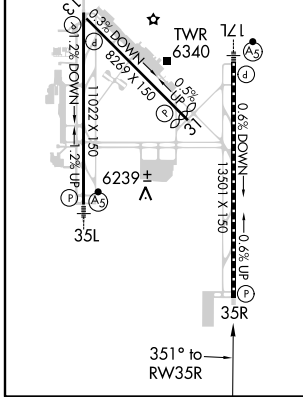
ATIS 125.0 254.3	SPRINGS APP CON 118.5 239.025	SPRINGS TOWER 133.15 335.55 (EAST) 119.9 360.6 (WEST)	GND CON 121.7 348.6	CLNC DEL 134.45 363.125
----------------------------	---	---	-------------------------------	-----------------------------------



Procedure NA for arrivals at DRAKE via V83 southeast bound.

Procedure NA for arrivals at PUB VORTAC via V81-611 southeast bound.

ELEV 6187	D	TDZE 6118
MIRL Rwy 13-31		
HIRL Rws 17R-35L and 17L-35R		
REIL Rws 13, 17R, 31, and 35R		
6207A TDZ/CL Rws 17L and 35R		



9000	WABOP	ADANE	VGS1 and RNAV glidepath not coincident (VGS1 Angle 3.00/TCH 72).	
↑	tr 073°	△	CEGIX	FALUR
*LNAV only			8100	Procedure Turn NA
*0.7 NM to RWY35R			351°	8100
0.7 NM			5.3 NM	6.7 NM
CATEGORY	A	B	C	D
LPV DA	6318-3/4 200 (200-3/4)			
LNAV/VNAV DA	6399-1 281 (300-1)			
LNAV MDA	6400-1 282 (300-1)			
CIRCLING	6720-1 533 (600-1)	6740-1 553 (600-1)	6740-1 1/2 553 (600-1 1/2)	6840-2 653 (700-2)
GS 3.00° TCH 55				

SW-1, 07 FEB 2013 to 07 MAR 2013

SW-1, 07 FEB 2013 to 07 MAR 2013

RNAV (GPS) Y RWY 35R