

WAAS CH 49112 W35A	APP CRS 351°	Rwy Idg 11022 TDZE 6075 Apt Elev 6187
--	------------------------	---

RNAV (GPS) Y RWY 35L

COLORADO SPRINGS/CITY OF COLORADO SPRINGS MUNI (COS)

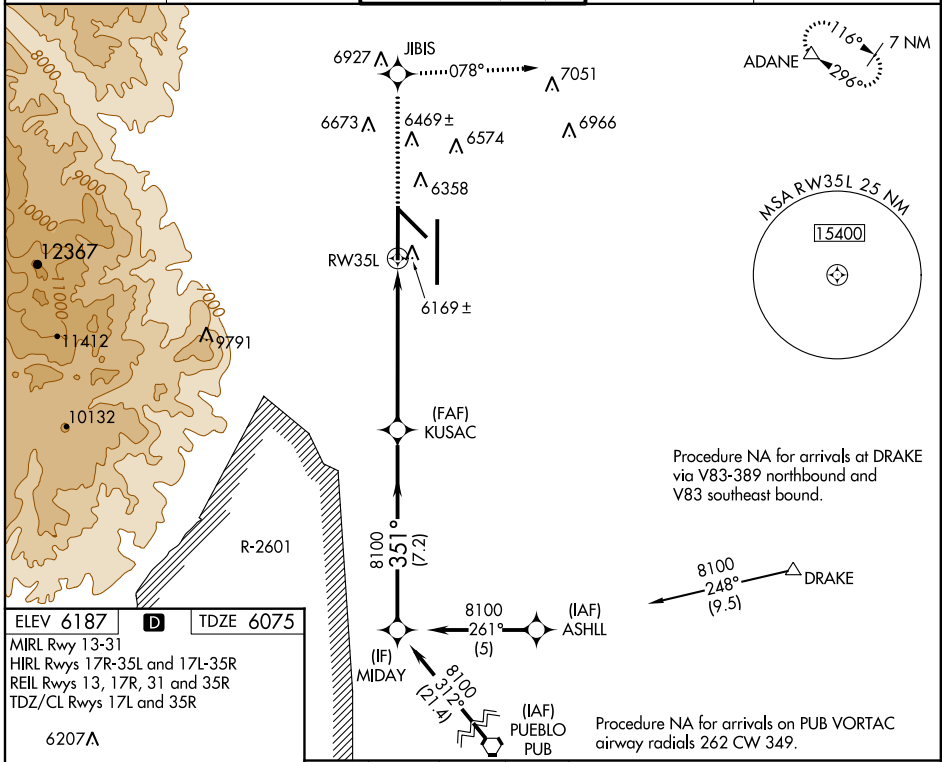
▼ For uncompensated Baro-VNAV systems, LNAV/VNAV NA below -27°C (-16°F) or above 36°C (96°F). DME/DME RNP- 0.3 NA.
For inoperative MALS R increase LNAV Cat D visibility to RVR 6000.
RADAR monitoring required when R-2601 in use.

MALS R

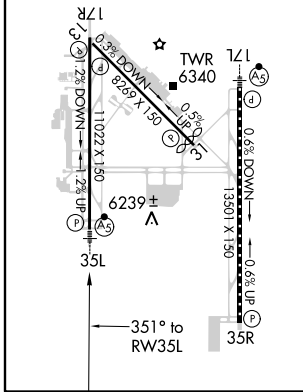


MISSED APPROACH: Climb to 9000 direct JIBIS and on track 078° to ADANE and hold.

ATIS 125.0 254.3	SPRINGS APP CON 118.5 239.025	SPRINGS TOWER 133.15 335.55 (EAST) 119.9 360.6 (WEST)	GND CON 121.7 348.6	CLNC DEL 134.45 363.125
----------------------------	---	---	-------------------------------	-----------------------------------



ELEV 6187	D	TDZE 6075
MIRL Rwy 13-31		
HIRL Rwy 17R-35L and 17L-35R		
REIL Rwy 13, 17R, 31 and 35R		
TDZ/CL Rwy 17L and 35R		
6207A		



9000	JIBIS	tr 078°	ADANE	KUSAC	MIDAY	Procedure Turn NA
*LNAV only	*1.1 NM to RW35L			8100	8100	GS 3.00° TCH 51
				351°		

CATEGORY	A	B	C	D
LPV DA		6275/24	200 (100-1/2)	
LNAV/VNAV DA		6439/40	364 (300-3/4)	
LNAV MDA		6460/24	385 (300-1/2)	6460/50 385 (300-1)
CIRCLING	6720-1 533 (600-1)	6740-1 553 (600-1)	6740-1 1/2 553 (600-1 1/2)	6840-2 653 (700-2)

RNAV (GPS) Y RWY 35L

SW-1, 07 FEB 2013 to 07 MAR 2013

SW-1, 07 FEB 2013 to 07 MAR 2013