

WAAS CH <b>72800</b> <b>W17B</b>	APP CRS <b>171°</b>	Rwy Idg TDZE Apt Elev	<b>11022</b> <b>6177</b> <b>6187</b>
--	------------------------	-----------------------------	--

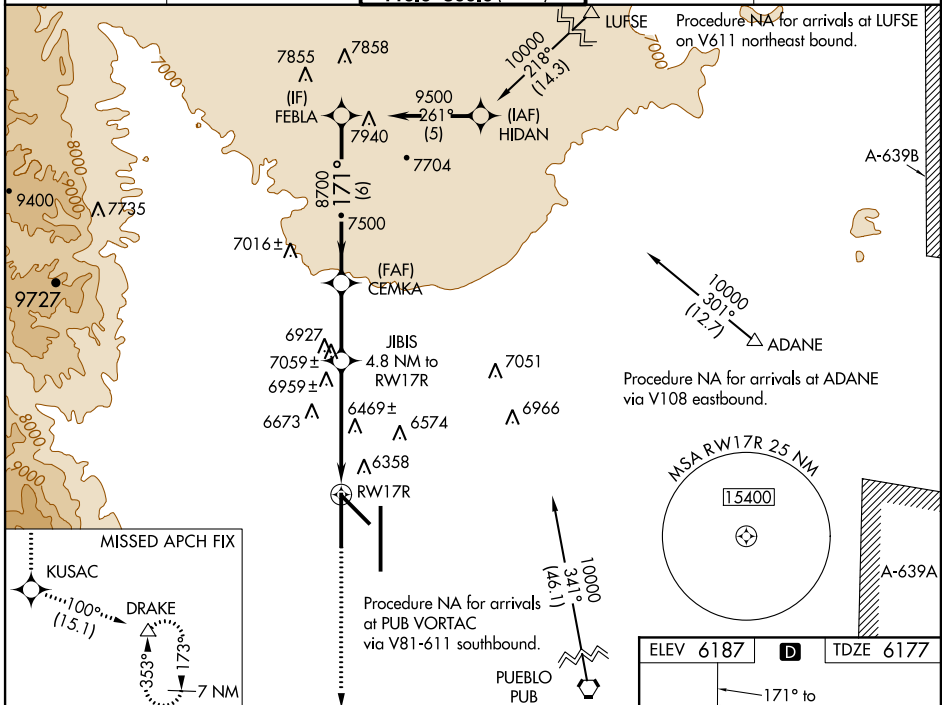
# RNAV (GPS) Y RWY 17R

COLORADO SPRINGS/CITY OF COLORADO SPRINGS MUNI (COS)

**▼** DME/DME RNP-0.3 NA. Visibility reduction by helicopters NA. Simultaneous approach authorized with ILS or LOC RWY 17L and ILS RWY 17L (SA CAT I). LNAV procedure NA during simultaneous operations. Use of FD or AP providing RNAV track guidance required during simultaneous operations.

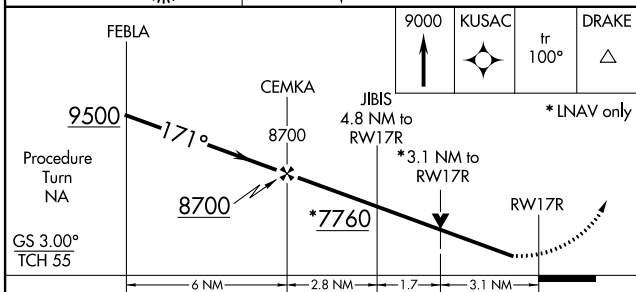
**MISSED APPROACH:** Climb to 9000 direct KUSAC and on track 100° to DRAKE and hold.

ATIS <b>125.0 254.3</b>	SPRINGS APP CON <b>118.5 239.025</b>	SPRINGS TOWER <b>133.15 335.55 (EAST)</b> <b>119.9 360.6 (WEST)</b>	GND CON <b>121.7 348.6</b>	CLNC DEL <b>134.45 363.125</b>
----------------------------	---	---	-------------------------------	-----------------------------------

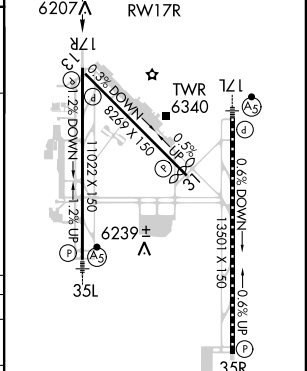


SW-1, 07 FEB 2013 to 07 MAR 2013

SW-1, 07 FEB 2013 to 07 MAR 2013



ELEV 6187	<b>D</b>	TDZE 6177
-----------	----------	-----------



CATEGORY	A	B	C	D
LPV DA	6377-¾		200 (200-¾)	
LNAV MDA	7220-1¼ 1043 (1100-1¼)	7220-1½ 1043 (1100-1½)	7220-3	1043 (1100-3)
CIRCLING	7220-1¼ 1033 (1100-1¼)	7220-1½ 1033 (1100-1½)	7220-3	1033 (1100-3)

MIRL Rwy 13-31  
HIRL Rwys 17R-35L and 17L-35R  
REIL Rwys 13, 17R, 31 and 35R  
TDZ/CL Rwys 17L and 35R