

# RNAV (GPS) Y RWY 17L

COLORADO SPRINGS/CITY OF COLORADO SPRINGS MUNI (COS)

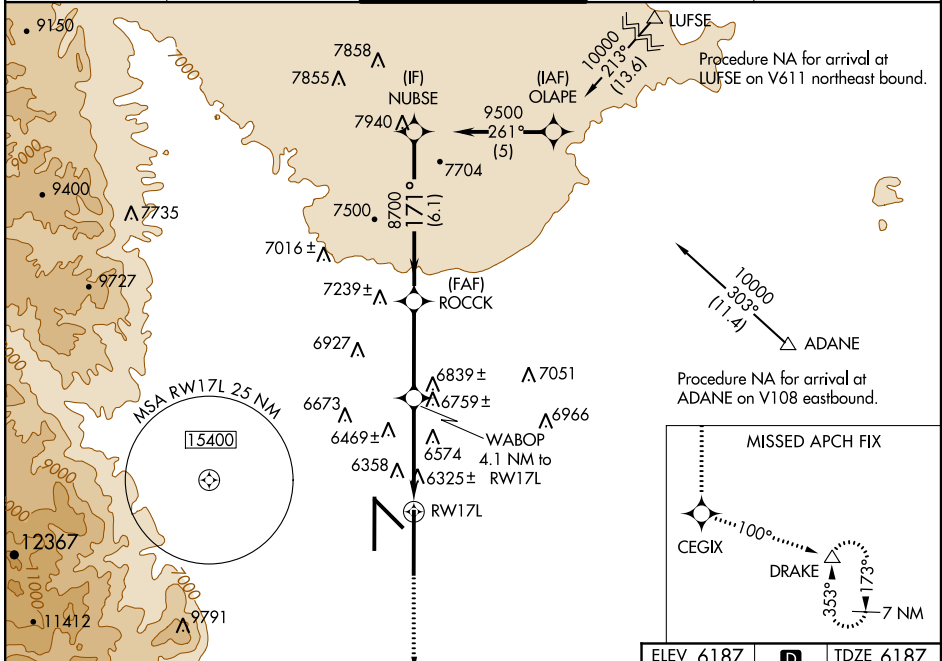
WAAS CH <b>69618</b> <b>W17A</b>	APP CRS <b>171°</b>	Rwy Idg <b>13501</b> TDZE <b>6187</b> Apt Elev <b>6187</b>
--	------------------------	--

**▽** DME/DME RNP-0.3 NA. For inoperative MALSRL increase visibility  
**▲** LNAV Cat A to RVR 5000. For uncompensated Baro-VNAV systems, LNAV-VNAV NA below -27°C (-16°F) or above 37°C (98°F).



**MISSED APPROACH:**  
 Climb to 9000 direct CEGIX and on track 100° to DRAKE and hold.

ATIS <b>125.0 254.3</b>	SPRINGS APP CON <b>118.5 239.025</b>	SPRINGS TOWER <b>133.15 335.55 (EAST)</b> <b>119.9 360.6 (WEST)</b>	GND CON <b>121.7 348.6</b>	CLNC DEL <b>134.45 363.125</b>
----------------------------	---	---	-------------------------------	-----------------------------------

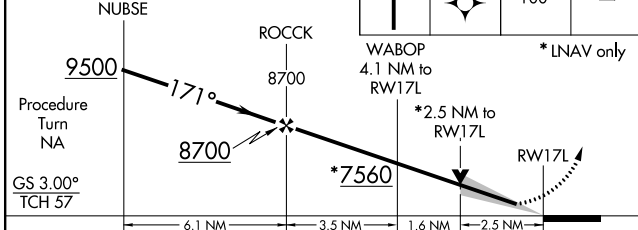


SW-1, 07 FEB 2013 to 07 MAR 2013

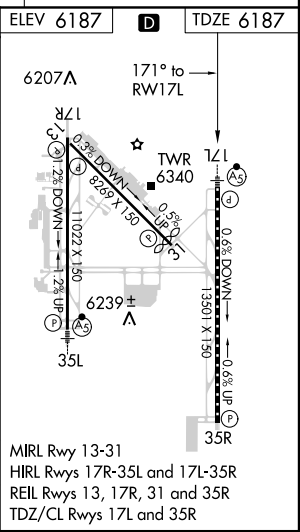
SW-1, 07 FEB 2013 to 07 MAR 2013

VGSI and RNAV glidepath not coincident (VGSI Angle 3.00/TCH 54).

9000	CEGIX	100°	DRAKE
------	-------	------	-------



CATEGORY	A	B	C	D
LPV DA	6387/24		200 (200-½)	
LNAV/VNAV DA	6671/60		484 (500-1¼)	
LNAV MDA	7020/40	833 (900-¾)	7020-2 833 (900-2)	7020-2¼ 833 (900-2¼)
CIRCLING	7020-1 833 (900-1)	7020-1¼ 833 (900-1¼)	7020-2½ 833 (900-2½)	7020-2¾ 833 (900-2¾)



# RNAV (GPS) Y RWY 17L

MIRL Rwy 13-31  
 HIRL Rwys 17R-35L and 17L-35R  
 REIL Rwys 13, 17R, 31 and 35R  
 TDZ/CL Rwys 17L and 35R