

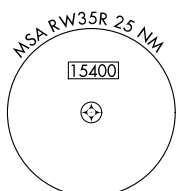
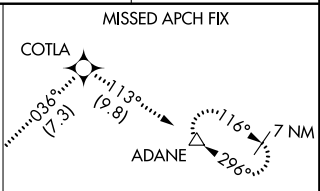
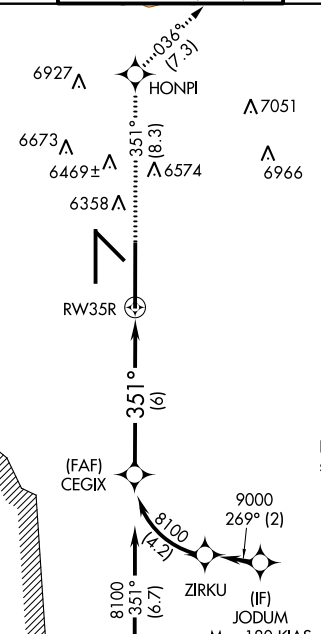
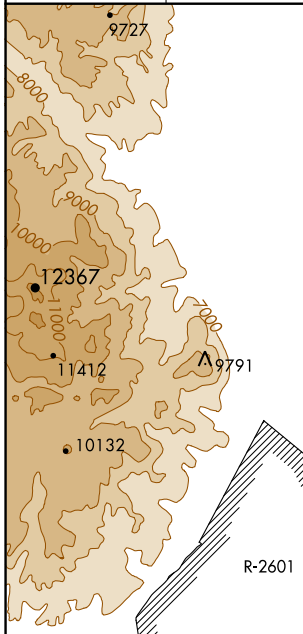
RNAV (RNP) Z RWY 35R

COLORADO SPRINGS/CITY OF COLORADO SPRINGS MUNI (COS)

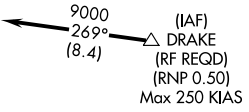
APP CRS	Rwy Idg	13501
351°	TDZE	6118
	Apt Elev	6187

GPS required. For uncompensated Baro-VNAV systems, procedure NA below -24°C (-11°F) or above 37°C (98°F). MISSED APPROACH: Climb to 9000 on track 351° to HONPI and on track 036° to COTLA, and on track 113° to ADANE and hold.

ATIS 125.0 254.3	SPRINGS APP CON 118.5 239.025	SPRINGS TOWER 133.15 335.55 (EAST) 119.9 360.6 (WEST)	GND CON 121.7 348.6	CLNC DEL 134.45 363.125
----------------------------	---	---	-------------------------------	-----------------------------------



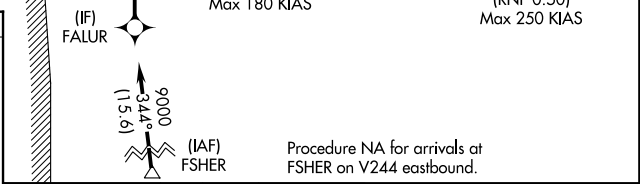
Procedure NA for arrivals at DRAKE on V83 southeast bound and for V389 southbound



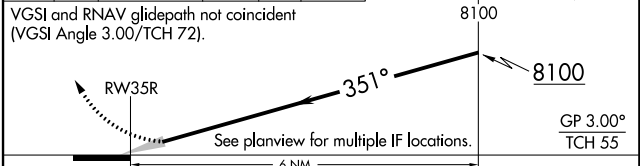
ELEV 6187 TDZE 6118

HIRL Rwy 17R-35L and 17L-35R
REIL Rwy 13, 17R, 31, and 35R
6207A TDZ/CL Rwy 17L and 35R
MIRL Rwy 13-31

351° to RWY35R



9000	tr	HONPI	tr	COTLA	tr	ADANE	CEGIX	Procedure Turn NA
↑		351°		036°		113°		



CATEGORY	A	B	C	D
RNP 0.15 DA		6377-1 259 (200-1)		
RNP 0.30 DA		6429-1 311 (300-1)		

AUTHORIZATION REQUIRED

SW-1, 07 FEB 2013 to 07 MAR 2013

SW-1, 07 FEB 2013 to 07 MAR 2013