

RNAV (RNP) Z RWY 35L

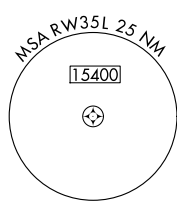
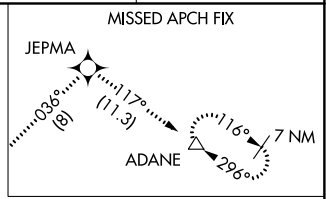
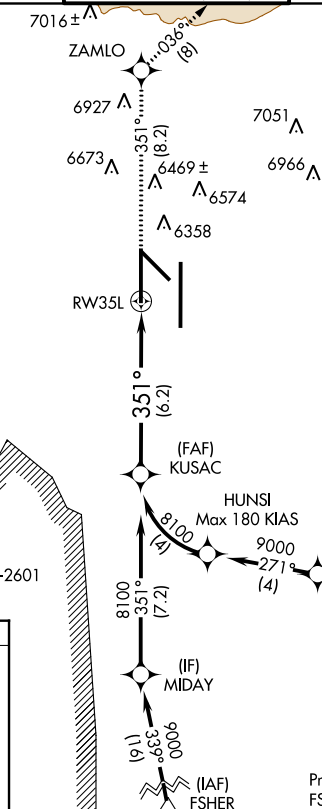
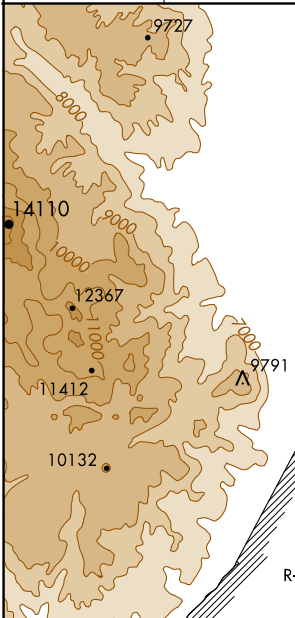
COLORADO SPRINGS/CITY OF COLORADO SPRINGS MUNI (COS)

APP CRS 351°	Rwy Idg 11022
	TDZE 6075
	Apt Elev 6187

GPS required. For uncompensated Baro-VNAV systems, procedure NA below -24°C (-11°F) or above 37°C (99°F). For inoperative MALSR increase RNP 0.15 visibility all Cats to RVR 5000, and RNP 0.30 visibility all Cats to RVR 6000. RADAR monitoring required when R-2601 in use.

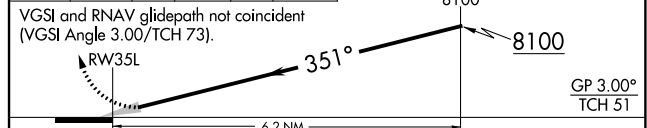
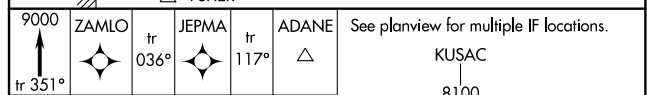
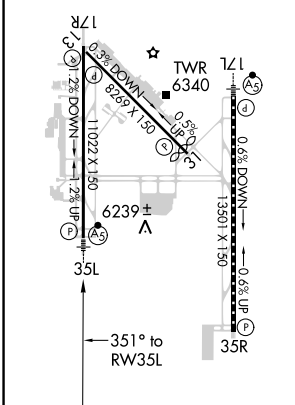
MALSR MISSED APPROACH: Climb to 9000 on track 351° to ZAMLO, and on track 036° to JEPMA, and on track 117° to ADANE and hold.

ATIS 125.0 254.3	SPRINGS APP CON 118.5 239.025	SPRINGS TOWER 133.15 335.55 (EAST) 119.9 360.6 (WEST)	GND CON 121.7 348.6	CLNC DEL 134.45 363.125
----------------------------	---	---	-------------------------------	-----------------------------------



Procedure NA for arrivals at DRAKE on V83 southeast bound and V389 southbound.

ELEV 6187	D	TDZE 6075
MIRL Rwy 13-31		
HIRL Rwy 17R-35L and 17L-35R		
REIL Rwy 13, 17R, 31, and 35R		
TDZ/CL Rwy 17L and 35R		
6207A		



CATEGORY	A	B	C	D
RNP 0.15 DA		6343/24	268 (200-1/2)	
RNP 0.30 DA		6399/40	324 (300-3/4)	

AUTHORIZATION REQUIRED

RNAV (RNP) Z RWY 35L

SW-1, 07 FEB 2013 to 07 MAR 2013

SW-1, 07 FEB 2013 to 07 MAR 2013