

RNAV (RNP) Z RWY 17R

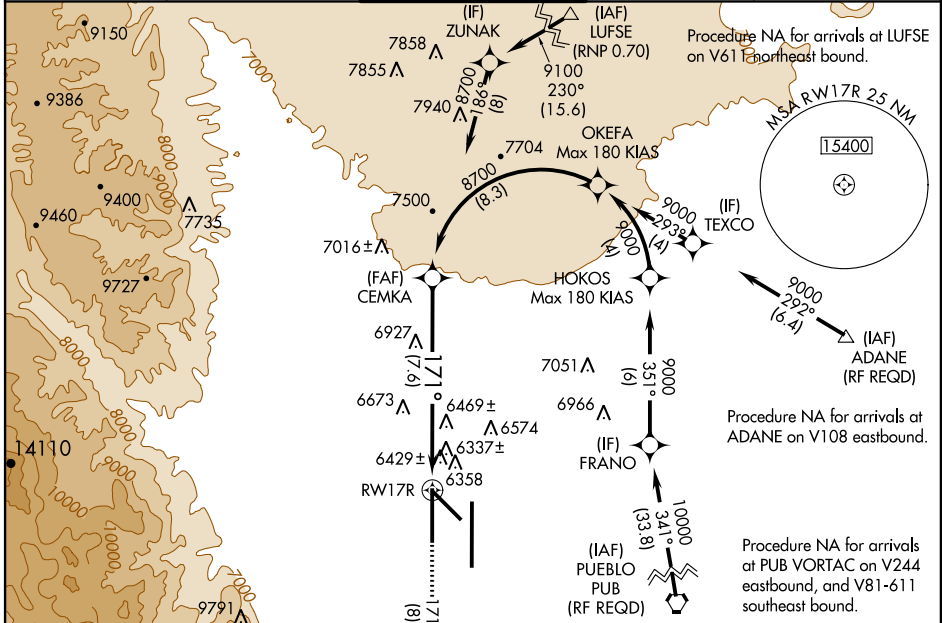
COLORADO SPRINGS/CITY OF COLORADO SPRINGS MUNI (COS)

APP CRS	Rwy Idg	11022
171°	TDZE	6177
	Apt Elev	6187

⚠ GPS required. For uncompensated Baro-VNAV systems, procedure NA below -24°C (-11°F) or above 37°C (99°F). When VGSi inop procedure NA at night. Simultaneous approach authorized with ILS or LOC RWY 17L and ILS RWY 17L (SA CAT I). Use of FD or AP providing RNAV track guidance required during simultaneous operations.

MISSED APPROACH: Climb to 9000 on track 171° to KUSAC and on track 125° to JEMKI, and on track 083° to DRAKE and hold.

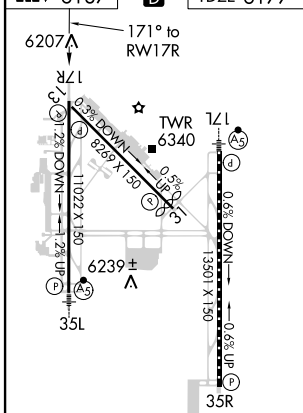
ATIS 125.0 254.3	SPRINGS APP CON 118.5 239.025	SPRINGS TOWER 133.15 335.55 (EAST) 119.9 360.6 (WEST)	GND CON 121.7 348.6	CLNC DEL 134.45 363.125
----------------------------	---	---	-------------------------------	-----------------------------------



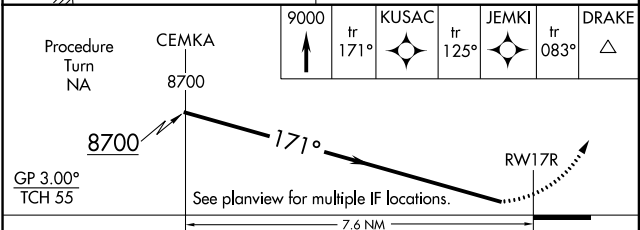
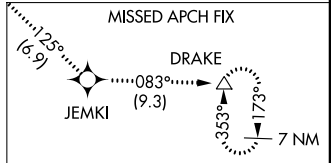
SW-1, 07 FEB 2013 to 07 MAR 2013

SW-1, 07 FEB 2013 to 07 MAR 2013

ELEV 6187	D	TDZE 6177
-----------	----------	-----------



MIRL Rwy 13-31
HIRL Rws 17R-35L and 17L-35R
REIL Rws 13, 17R, 31 and 35R
TDZ/CL Rws 17L and 35R



CATEGORY	A	B	C	D
RNP 0.15 DA		6622-1½	445 (500-1½)	
RNP 0.22 DA		6750-2	573 (600-2)	
RNP 0.30 DA		6789-2¼	612 (700-2¼)	

AUTHORIZATION REQUIRED