

APP CRS 171°	Rwy Idg 13501
	TDZE 6187
	Apt Elev 6187

RNAV (RNP) Z RWY 17L

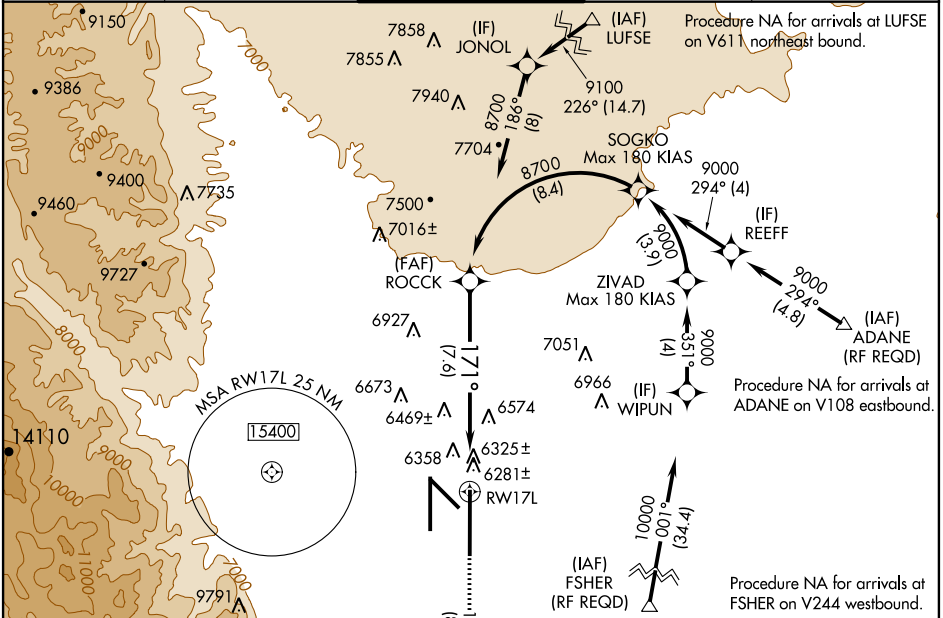
COLORADO SPRINGS/CITY OF COLORADO SPRINGS MUNI (COS)

GPS Required. For uncompassated Baro-VNAV systems, procedure NA below -24°C (-11°F) or above 37°C (99°F). For inoperative MALSRR increase RNP 0.15 visibility all Cats to RVR 6000, RNP 0.22 visibility all Cats to 1½ mile, and RNP 0.30 visibility all Cats to 1¾ mile.



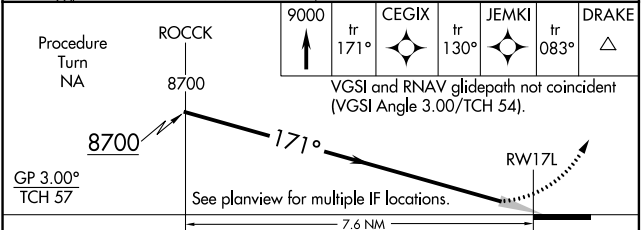
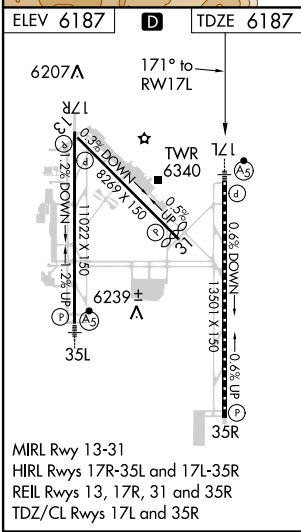
MISSED APPROACH: Climb to 9000 on track 171° to CEGIX and on track 130° to JEMKI, and on track 083° to DRAKE and hold.

ATIS 125.0 254.3	SPRINGS APP CON 118.5 239.025	SPRINGS TOWER 133.15 335.55 (EAST) 119.9 360.6 (WEST)	GND CON 121.7 348.6	CLNC DEL 134.45 363.125
----------------------------	---	---	-------------------------------	-----------------------------------



SW-1, 07 FEB 2013 to 07 MAR 2013

SW-1, 07 FEB 2013 to 07 MAR 2013



CATEGORY	A	B	C	D
RNP 0.15 DA		6561/40	374 (400-¾)	
RNP 0.22 DA		6642/50	455 (500-1)	
RNP 0.30 DA		6726-1½	539 (600-1½)	

AUTHORIZATION REQUIRED