

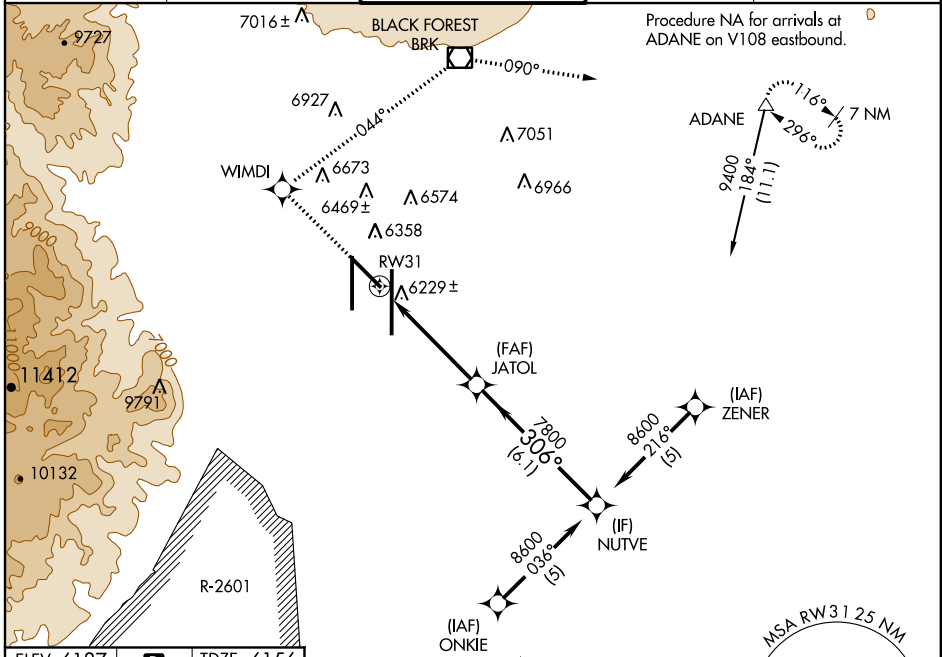
APP CRS	Rwy Idg	<b>7913</b>
<b>306°</b>	TDZE	<b>6156</b>
	Apt Elev	<b>6187</b>

# RNAV (GPS) RWY 31

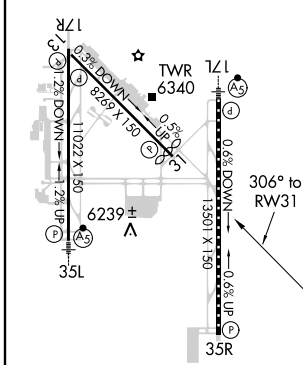
COLORADO SPRINGS/CITY OF COLORADO SPRINGS MUNI (COS)

<p><b>▽</b> DME/DME RNP-0.3 NA. Visibility reduction by helicopters NA.</p>		<p>MISSED APPROACH: Climb to 9000 direct WIMDI and right turn on track 044° to BRK VOR/DME and on track 090° to ADANE and hold.</p>		
---	--	---	--	--

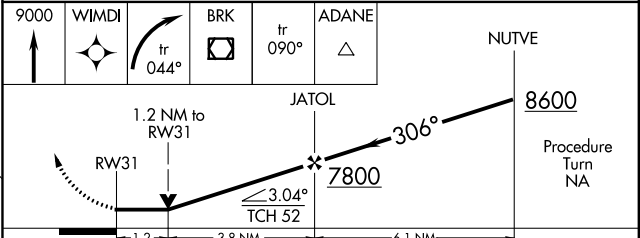
<p>ATIS <b>125.0 254.3</b></p>	<p>SPRINGS APP CON <b>118.5 239.025</b></p>	<p>SPRINGS TOWER <b>133.15 335.55 (EAST)</b> <b>119.9 360.6 (WEST)</b></p>	<p>GND CON <b>121.7 348.6</b></p>	<p>CLNC DEL <b>134.45 363.125</b></p>
------------------------------------	---	--	---------------------------------------	---



ELEV 6187	<b>D</b>	TDZE 6156
-----------	----------	-----------



Procedure NA for arrivals at PUB VORTAC on V81-611 southbound, and V244 eastbound.



CATEGORY	A	B	C	D
LNAV MDA	6580-1	424 (400-1)	6580-1¼	424 (400-1¼)
CIRCLING	6720-1 533 (600-1)	6740-1 553 (600-1)	6740-1½ 553 (600-1½)	6840-2 653 (700-2)

MIRL Rwy 13-31  
HIRL Rws 17R-35L and 17L-35R  
REIL Rws 13, 17R, 31 and 35R  
TDZ/CL Rws 17L and 35R

# RNAV (GPS) RWY 31

SW-1, 07 FEB 2013 to 07 MAR 2013

SW-1, 07 FEB 2013 to 07 MAR 2013