

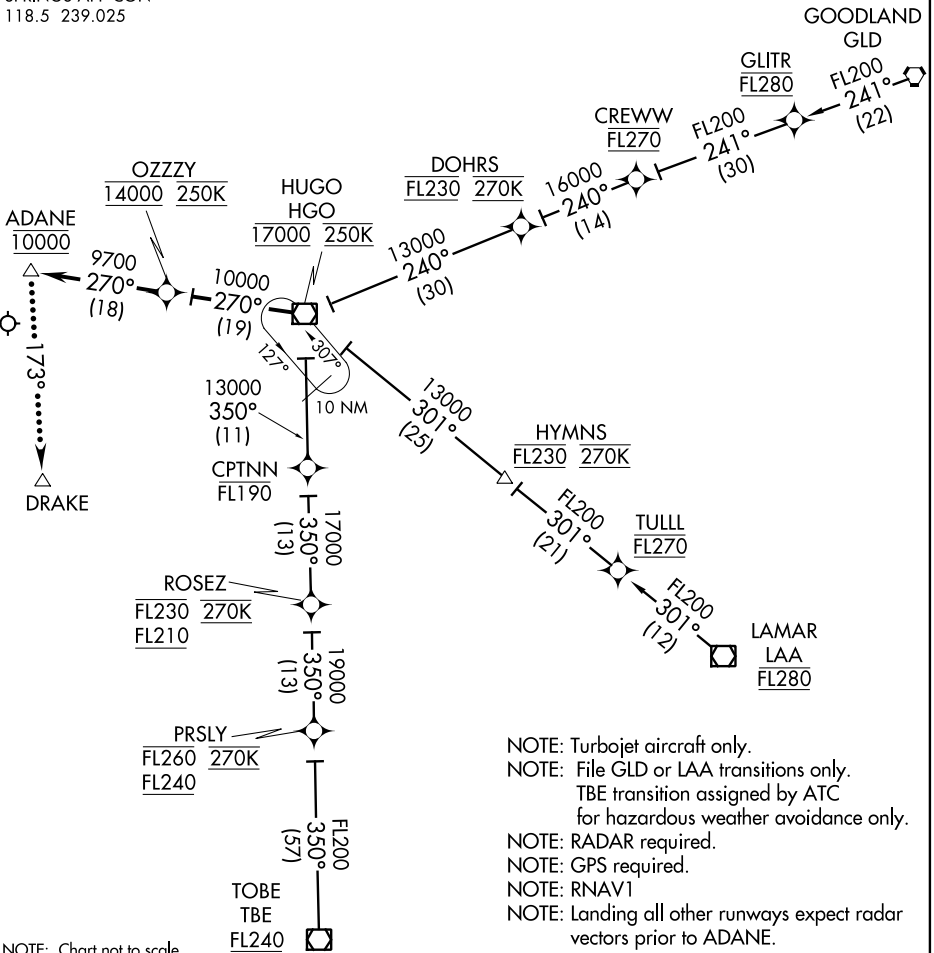
(OZZY.OZZY1) 12320

OZZY ONE ARRIVAL (RNAV)

ST-87 (FAA)

CITY OF COLORADO SPRINGS MUNI (COS)
COLORADO SPRINGS, COLORADO

ATIS
125.0 254.3
SPRINGS APP CON
118.5 239.025



NOTE: Chart not to scale.

- NOTE: Turbojet aircraft only.
- NOTE: File GLD or LAA transitions only.
- NOTE: TBE transition assigned by ATC for hazardous weather avoidance only.
- NOTE: RADAR required.
- NOTE: GPS required.
- NOTE: RNAV1
- NOTE: Landing all other runways expect radar vectors prior to ADANE.

GOODLAND TRANSITION (GLD.OZZY1)

LAMAR TRANSITION (LAA.OZZY1)

TOBE TRANSITION (TBE.OZZY1)

From over HGO VOR/DME on track 270° to cross OZZY at 14000 at 250 KTS, then on track 270° to cross ADANE at 10000. Expect ILS RWY 17L, 17R, or visual approach as assigned by ATC.

LOST COMMUNICATIONS: Landing South: At ADANE join and execute ILS RWY 17L approach.

Landing North: At ADANE fly on 173° track to DRAKE WP maintain 10000. At DRAKE join and execute ILS RWY 35L approach.

OZZY ONE ARRIVAL (RNAV)

(OZZY.OZZY1) 12320

COLORADO SPRINGS, COLORADO
CITY OF COLORADO SPRINGS MUNI (COS)

SW-1, 07 FEB 2013 to 07 MAR 2013

SW-1, 07 FEB 2013 to 07 MAR 2013