

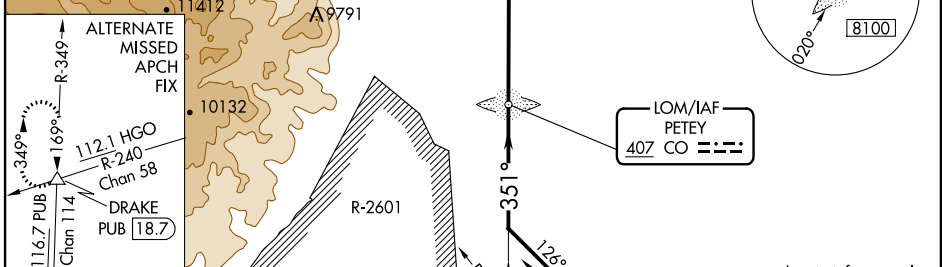
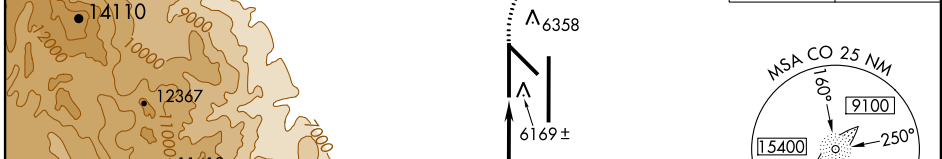
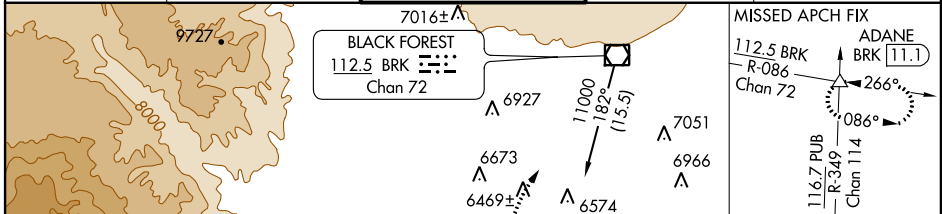
NDB RWY 35L

COLORADO SPRINGS/CITY OF COLORADO SPRINGS MUNI (COS)

LOM CO 407	APP CRS 351°	Rwy Idg TDZE Apt Elev	11022 6075 6187
----------------------	------------------------	-----------------------------	--

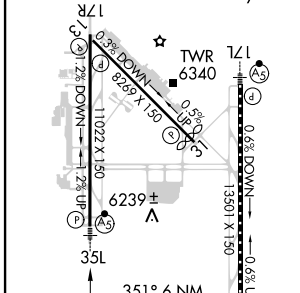
RADAR monitoring required when R-2601 in use.	MISSED APPROACH: Climb to 6700, then climbing right turn to 9000 on heading 051° and BRK VOR/DME R-086 to ADANE INT/BRK 11.1 DME and hold.
---	--

ATIS 125.0 254.3	SPRINGS APP CON 118.5 239.025	SPRINGS TOWER 133.15 335.55 (EAST) 119.9 360.6 (WEST)	GND CON 121.7 348.6	CLNC DEL 134.45 363.125
----------------------------	---	---	-------------------------------	-----------------------------------

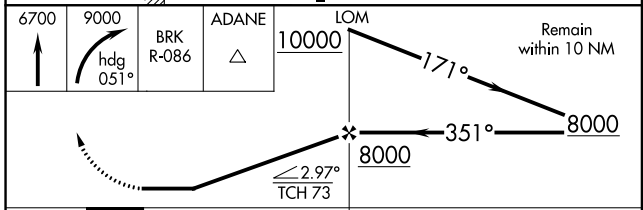


ELEV 6187	D	TDZE 6075
-----------	----------	-----------

HIRL Rwy 17R-35L and 17L-35R
 REIL Rwy 13, 17R, 31 and 35R
 6207A TDZ/CL Rwy 17L and 35R
 MIRL Rwy 13-31



FAF to MAP 6 NM					
Knots	60	90	120	150	180
Min:Sec	6:00	4:00	3:00	2:24	2:00



CATEGORY	A	B	C	D
S-35L	6520/40	445 (400-3/4)		6520/60 445 (400-1/4)
CIRCLING	6720-1 533 (600-1)	6740-1 553 (600-1)	6740-1 1/2 553 (600-1 1/2)	6840-2 653 (700-2)

NDB RWY 35L

SW-1, 07 FEB 2013 to 07 MAR 2013

SW-1, 07 FEB 2013 to 07 MAR 2013