

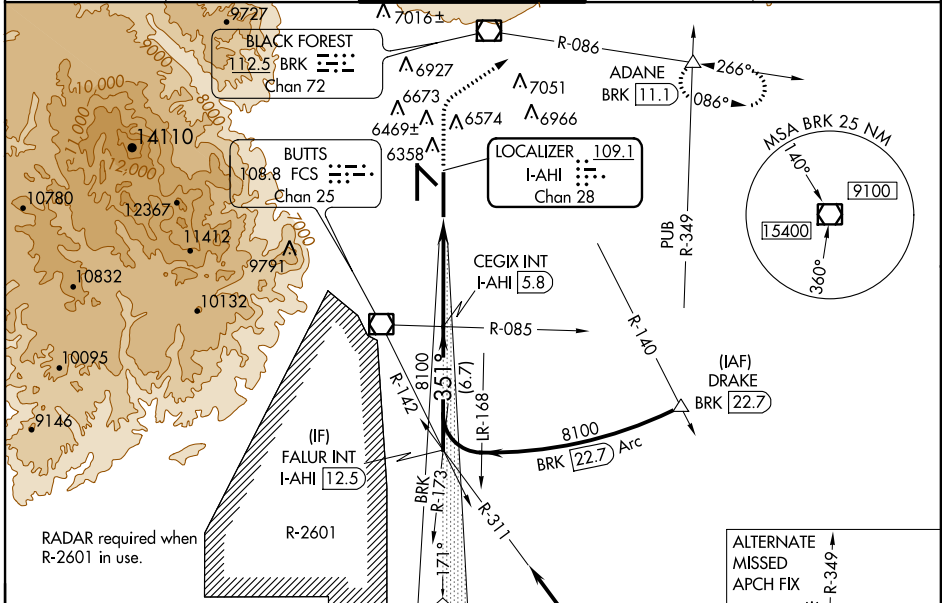
LOC/DME I-AHI 109.1 Chan 28	APP CRS 351°	Rwy Idg 13501 TDZE 6118 Apt Elev 6187
--	------------------------	--

ILS or LOC RWY 35R

COLORADO SPRINGS/CITY OF COLORADO SPRINGS MUNI (COS)

MISSED APPROACH: Climb to 6700 then climbing right turn to 9000 on heading 047° and on BRK VOR/DME R-086 to ADANE INT/BRK 11.1 DME and hold.

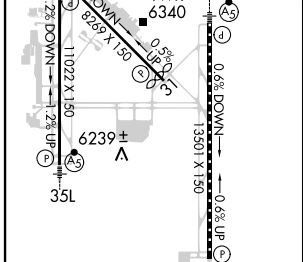
ATIS 125.0 254.3	SPRINGS APP CON 118.5 239.025	SPRINGS TOWER 133.15 335.55 (EAST) 119.9 360.6 (WEST)	GND CON 121.7 348.6	CLNC DEL 134.45 363.125
----------------------------	---	---	-------------------------------	-----------------------------------



SW-1, 07 FEB 2013 to 07 MAR 2013

SW-1, 07 FEB 2013 to 07 MAR 2013

ELEV 6187	TDZE 6118
MIRL Rwy 13-31	
HIRL Rwys 17R-35L and 17L-35R	
6207A REIL Rwys 13, 17R, 31 and 35R	
TDZ/CL Rwys 17L and 35R	



Procedure NA for arrival on PUB VORTAC airway radials 262 CW 333.

IAF PUEBLO 116.7 PUB Chan 114

ALTERNATE MISSED APCH FIX

R-240 116.7 PUB Chan 114

R-349 119.9 PUB Chan 58

112.1 HGO Chan 58

DRAKE PUB 18.7

6700	9000	ADANE	VGSI and ILS glidepath not coincident (VGSI Angle 3.00/TCH 72).	Procedure Turn
↑	hdg 047°	BRK R-086	CEGIX INT I-AHI 5.8	Turn 047°
I-AHI DME ANTENNA		*LOC only		FALUR INT I-AHI 12.5
I-AHI 0.5		8100		
Use I-AHI DME when on the localizer course.		8100		
0.7		5.3 NM		6.7 NM

FAF to MAP 6 NM							
Knots	60	90	120	150	180		
Min:Sec	6:00	4:00	3:00	2:24	2:00		
CATEGORY	A				B	C	D
S-ILS 35R	6318-¾				200 (200-¾)		
S-LOC 35R	6380-1				262 (200-1)		
CIRCLING	6720-1	6740-1	6740-1¼	6840-2			
	533 (600-1)	553 (600-1)	553 (600-1¼)	653 (700-2)			

ILS or LOC RWY 35R