

LOC I-COS <b>109.9</b>	APP CRS <b>351°</b>	Rwy Idg TDZE Apt Elev	<b>11022</b> <b>6075</b> <b>6187</b>
---------------------------	------------------------	-----------------------------	--

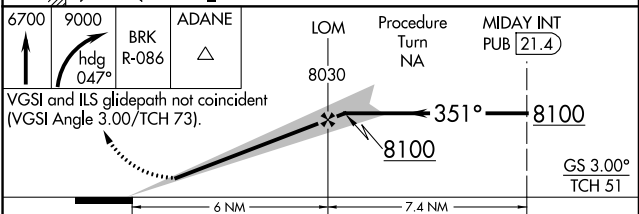
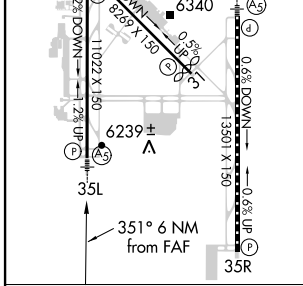
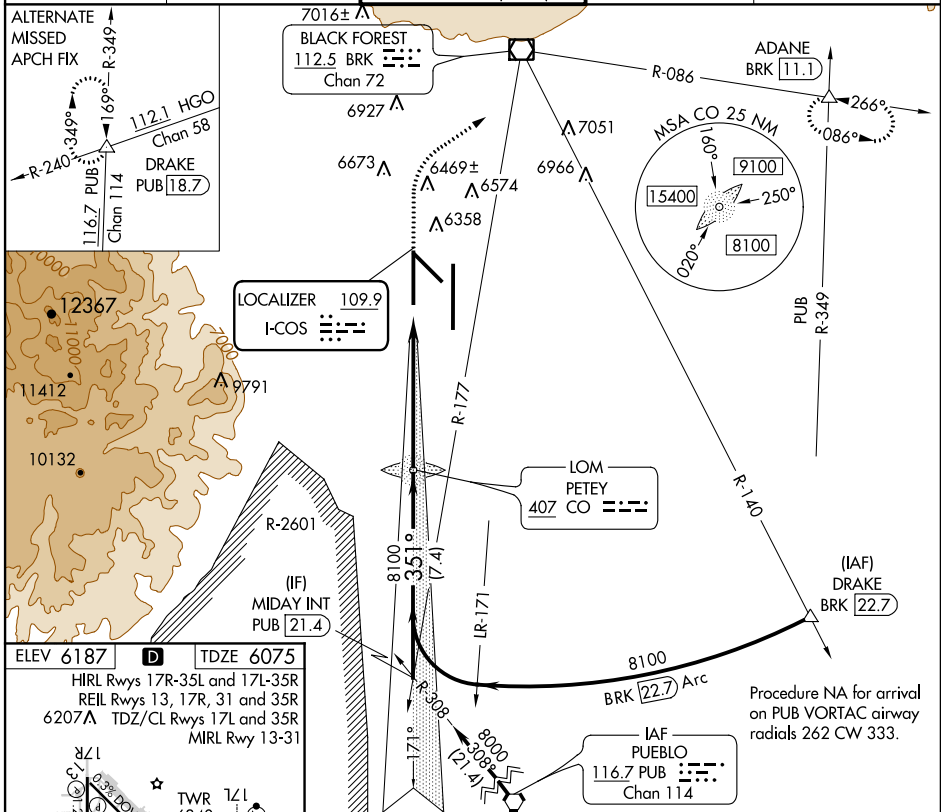
# ILS or LOC RWY 35L

COLORADO SPRINGS/CITY OF COLORADO SPRINGS MUNI (COS)

**⚠** For inoperative MALS/R, increase S-LOC 35L Cat D visibility to RVR 5000. RADAR monitoring required when R-2601 in use.  
**\***RVR 1800 authorized with the use of FD or AP or HUD to DA.

**MALS/R** MISSED APPROACH: Climb to 6700 then climbing right turn to 9000 on heading 047° and on BRK VOR/DME R-086 to ADANE INT/BRK 11.1 DME and hold.

ATIS <b>125.0 254.3</b>	SPRINGS APP CON <b>118.5 239.025</b>	SPRINGS TOWER <b>133.15 335.55 (EAST)</b> <b>119.9 360.6 (WEST)</b>	GND CON <b>121.7 348.6</b>	CLNC DEL <b>134.45 363.125</b>
----------------------------	---	---	-------------------------------	-----------------------------------



CATEGORY	A	B	C	D
S-ILS 35L	*6275/24 200 (100-½)			
S-LOC 35L	6340/24 265 (200-½)			6340/40 265 (200-¾)
CIRCLING	6720-1 533 (600-1)	6740-1 533 (600-1)	6740-1½ 533 (600-1½)	6840-2 653 (700-2)

FAF to MAP 6 NM					
Knots	60	90	120	150	180
Min:Sec	6:00	4:00	3:00	2:24	2:00

SW-1, 07 FEB 2013 to 07 MAR 2013

SW-1, 07 FEB 2013 to 07 MAR 2013