

LOC/DME I-LPI <b>109.1</b> Chan 28	APP CRS <b>171°</b>	Rwy Idg TDZE Apt Elev	<b>13501</b> <b>6187</b> <b>6187</b>
--	------------------------	-----------------------------	--

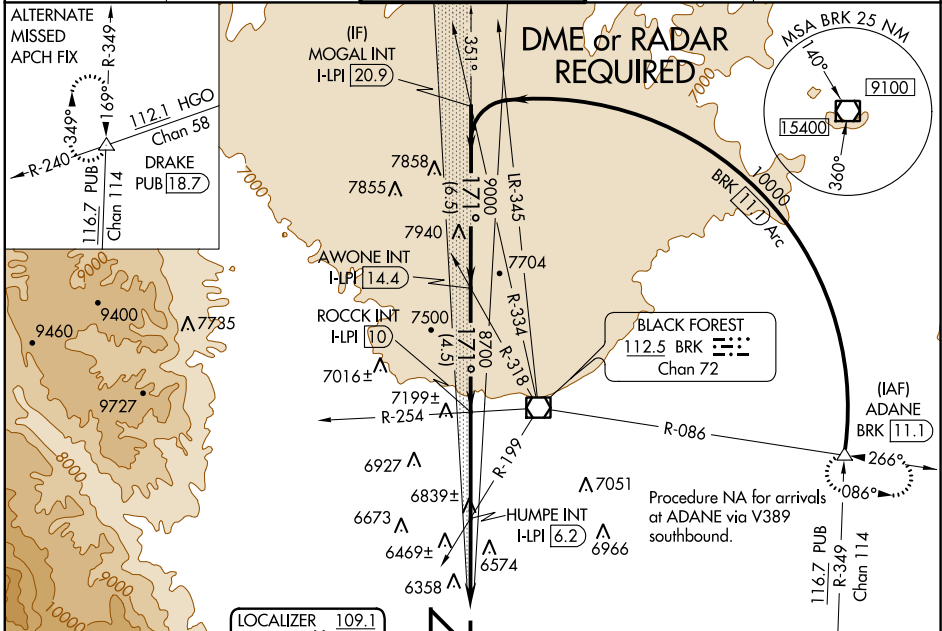
# ILS or LOC RWY 17L

COLORADO SPRINGS/CITY OF COLORADO SPRINGS MUNI (COS)

**▼** For inoperative MALS, increase S-LOC 17L  
**▲** Cat A visibility to 1 mile.  
 Simultaneous approach authorized with Rwy 17R.

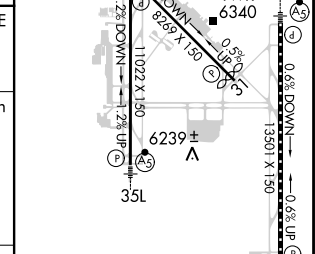
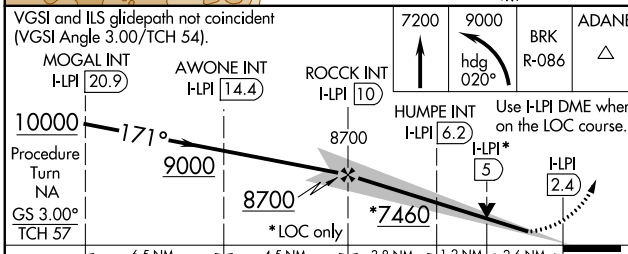
**MALS** MISSED APPROACH: Climb to 7200 then climbing left turn to 9000 on heading 020° and on BRK VOR/DME R-086 to ADANE INT/BRK VOR/DME 11.1 DME and hold.

ATIS <b>125.0 254.3</b>	SPRINGS APP CON <b>118.5 239.025</b>	SPRINGS TOWER <b>133.15 335.55 (EAST)</b> <b>119.9 360.6 (WEST)</b>	GND CON <b>121.7 348.6</b>	CLNC DEL <b>134.45 363.125</b>
----------------------------	---	---	-------------------------------	-----------------------------------



LOCALIZER <b>109.1</b> I-LPI Chan 28
--

ELEV 6187	<b>D</b>	TDZE 6187
-----------	----------	-----------



CATEGORY	A	B	C	D
S-ILS 17L	6387/18 200 (200-½)			
S-LOC 17L	7060/40 873 (900-¾)	7060-2 873 (900-2)	7060-2¼ 873 (900-2¼)	
CIRCLING	7060-1 873 (900-1)	7060-1¼ 873 (900-1¼)	7060-2½ 873 (900-2½)	7060-2¾ 873 (900-2¾)

MIRL Rwy 13-31	HIRL Rwys 17R-35L and 17L-35R
REIL Rwys 13, 17R, 31 and 35R	TDZ/CL Rwys 17L and 35R
FAF to MAP 7.6 NM	
Knots	60 90 120 150 180
Min:Sec	7:36 5:04 3:48 3:02 2:32

# ILS or LOC RWY 17L

SW-1, 07 FEB 2013 to 07 MAR 2013

SW-1, 07 FEB 2013 to 07 MAR 2013