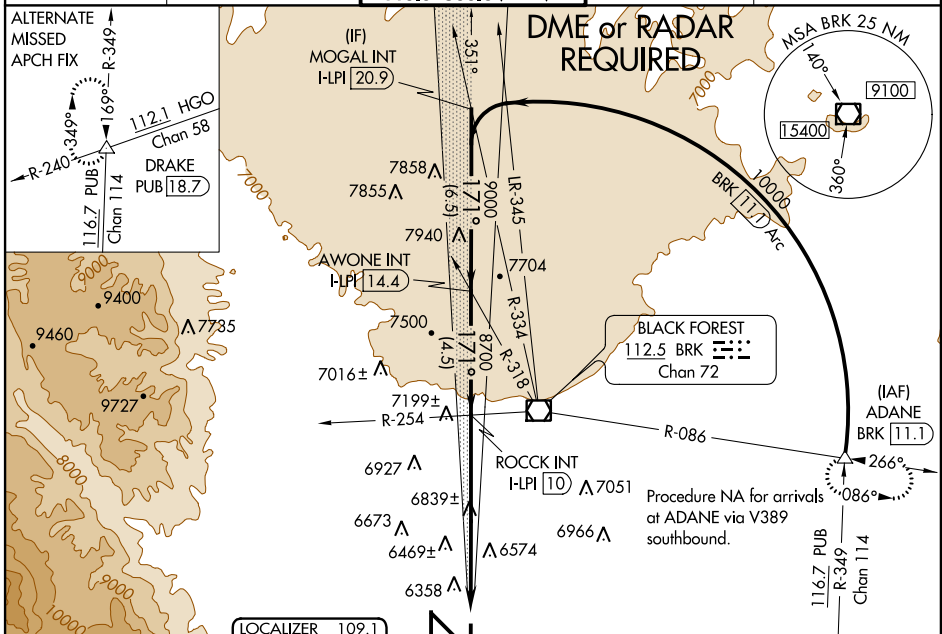


LOC/DME I-LPI 109.1 Chan 28	APP CRS 171°	Rwy Idg TDZE Apt Elev	13501 6187 6187
--	------------------------	-----------------------------	--

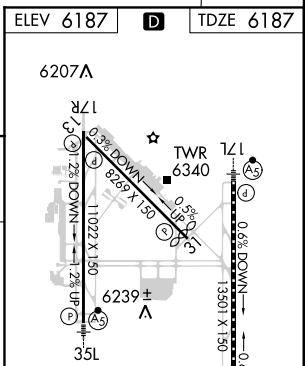
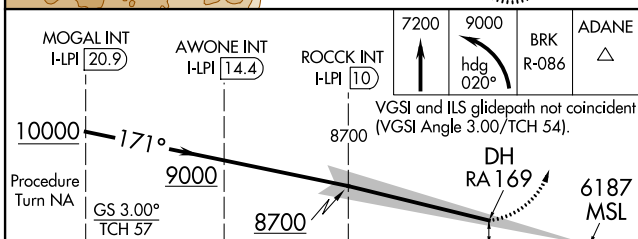
ILS RWY 17L (SA CAT I)
COLORADO SPRINGS/CITY OF COLORADO SPRINGS MUNI (COS)

<p>⚠ Authorization to conduct this approach requires specific OPSEC, MSPEC, or LOA approval and use of HUD to DA. Simultaneous approach authorized with Rwy 17R.</p>	<p>MALS R</p>	<p>MISSED APPROACH: Climb to 7200 then climbing left turn to 9000 on heading 020° and on BRK VOR/DME 11.1 DME and hold.</p>
--	---------------	---

<p>ATIS 125.0 254.3</p>	<p>SPRINGS APP CON 118.5 239.025</p>	<p>SPRINGS TOWER 133.15 335.55 (EAST) 119.9 360.6 (WEST)</p>	<p>GND CON 121.7 348.6</p>	<p>CLNC DEL 134.45 363.125</p>
------------------------------------	---	--	---------------------------------------	---



ELEV 6187	D	TDZE 6187
-----------	----------	-----------



CATEGORY	A	B	C	D
S-ILS 17L	RA 169/14 150 DA 6337			

SA CATEGORY I ILS - SPECIAL AIRCREW & AIRCRAFT CERTIFICATION REQUIRED

MIRL Rwy 13-31
HIRL Rwys 17R-35L and 17L-35R
REIL Rwys 13, 17R, 31 and 35R
TDZ/CL Rwys 17L and 35R

SW-1, 07 FEB 2013 to 07 MAR 2013

SW-1, 07 FEB 2013 to 07 MAR 2013