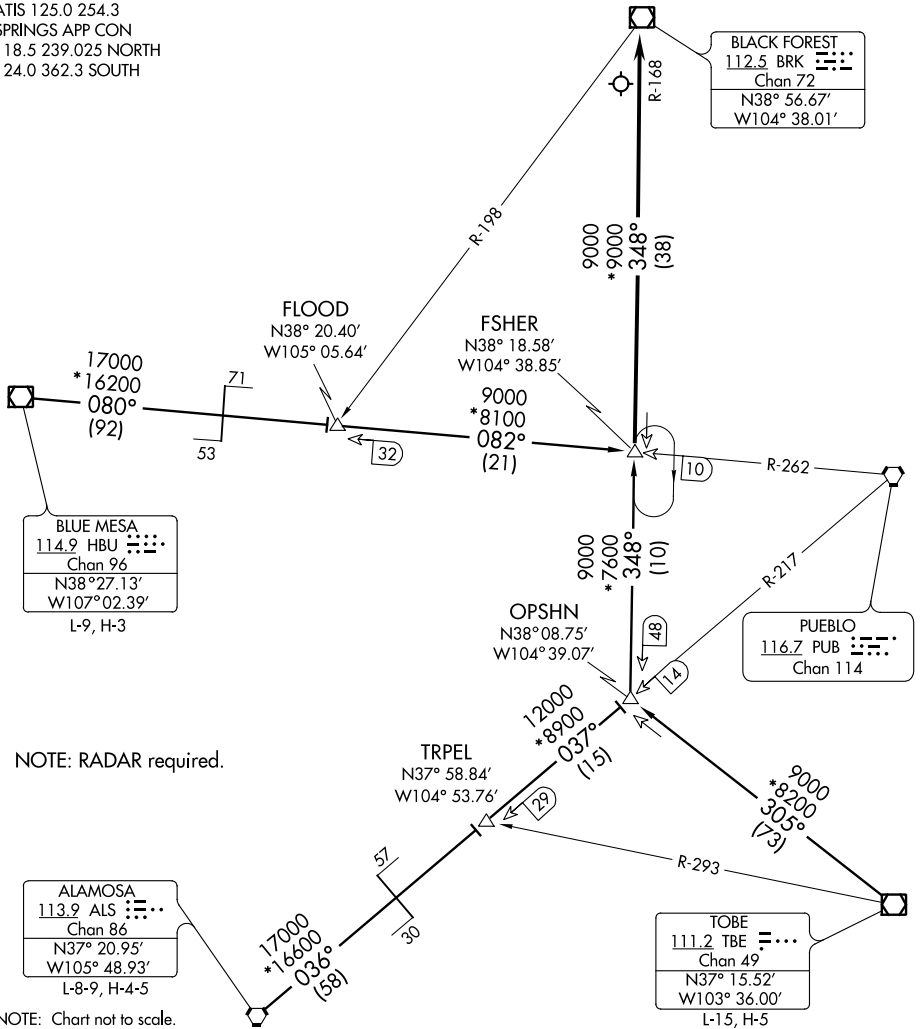


# DEBERRY TWO ARRIVAL

ST-87 (FAA)

CITY OF COLORADO SPRINGS MUNI  
COLORADO SPRINGS, COLORADO

ATIS 125.0 254.3  
SPRINGS APP CON  
118.5 239.025 NORTH  
124.0 362.3 SOUTH



NOTE: RADAR required.

NOTE: Chart not to scale.

**ALAMOSA TRANSITION (ALS.DBRY2):** From over ALS VORTAC via ALS R-036 and PUB R-217 to OPSHN INT, then via BRK R-168 to FSHER INT. Thence. . . .

**BLUE MESA TRANSITION (HBU.DBRY2):** From over HBU VOR/DME via HBU R-080 and PUB R-262 to FSHER INT. Thence. . . .

**TOBE TRANSITION (TBE.DBRY2):** From over TBE VOR/DME via TBE R-305 and BRK R-168 to FSHER INT. Thence. . . .

. . . . From over FSHER INT via the BRK R-168 to BRK VOR/DME. Expect radar vectors to the final approach course at or before BRK VOR/DME.

**LOST COMMUNICATIONS:** Proceed to BRK VOR/DME.

SW-1, 07 FEB 2013 to 07 MAR 2013

SW-1, 07 FEB 2013 to 07 MAR 2013