

WAAS CH 77618 W21A	APP CRS 214°	Rwy Idg THRE Apt Elev 6095 4186 4187
--	------------------------	--

RNAV (GPS) RWY 21

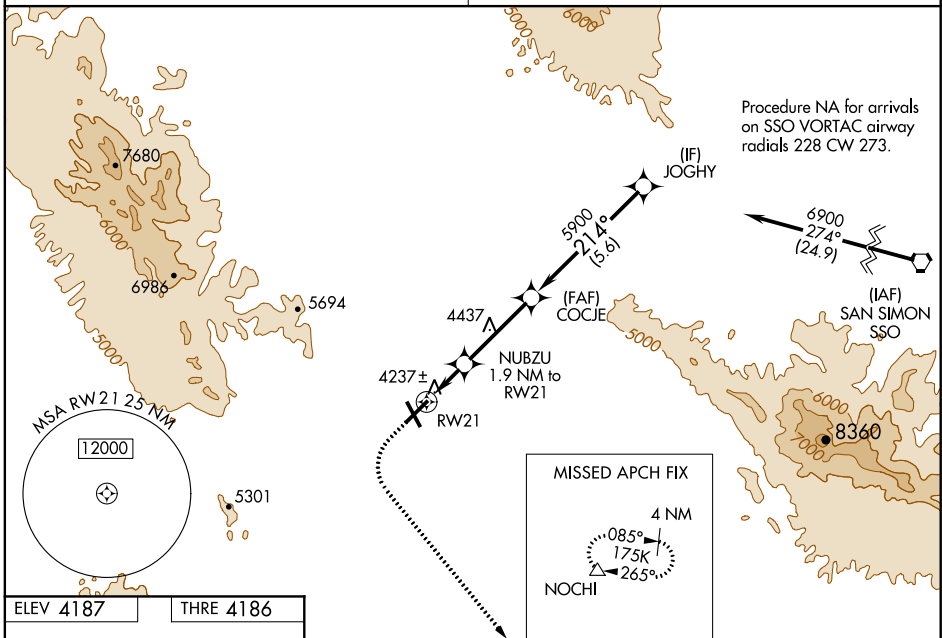
WILLCOX/COCHISE COUNTY (P33)

NA Baro-VNAV NA when using Douglass Bisbee altimeter setting. For uncompensated Baro-VNAV systems, LNAV/VNAV NA below -23°C (-9°F) or above 54°C (130°F). Obtain local altimeter setting on CTAF; when not received, use Douglass Bisbee altimeter setting and increase all DA/MDA 120 feet and LPV and VNAV/LNAV visibility all Cats. 3/8 mile. DME/DME RNP -0.3 NA.

MISSED APPROACH: Climb to 4600 then climbing left turn to 8800 direct NOCHI and hold, continue climb-in-hold 8800.

ALBUQUERQUE CENTER
134.45 327.15

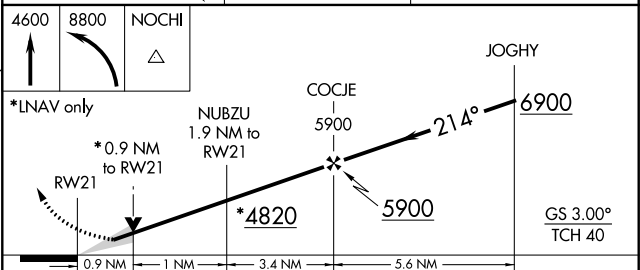
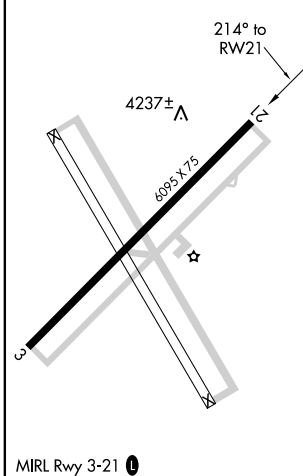
UNICOM
122.8 (CTAF) 0



SW-4, 07 FEB 2013 to 07 MAR 2013

SW-4, 07 FEB 2013 to 07 MAR 2013

ELEV 4187	THRE 4186
-----------	-----------



CATEGORY	A	B	C	D
LPV DA	4436-7/8	250 (300-7/8)		NA
LNAV/VNAV DA	4436-7/8	250 (300-7/8)		NA
LNAV MDA	4500-1	314 (400-1)		NA
CIRCLING	4600-1 413 (500-1)	4640-1 453 (500-1)		NA