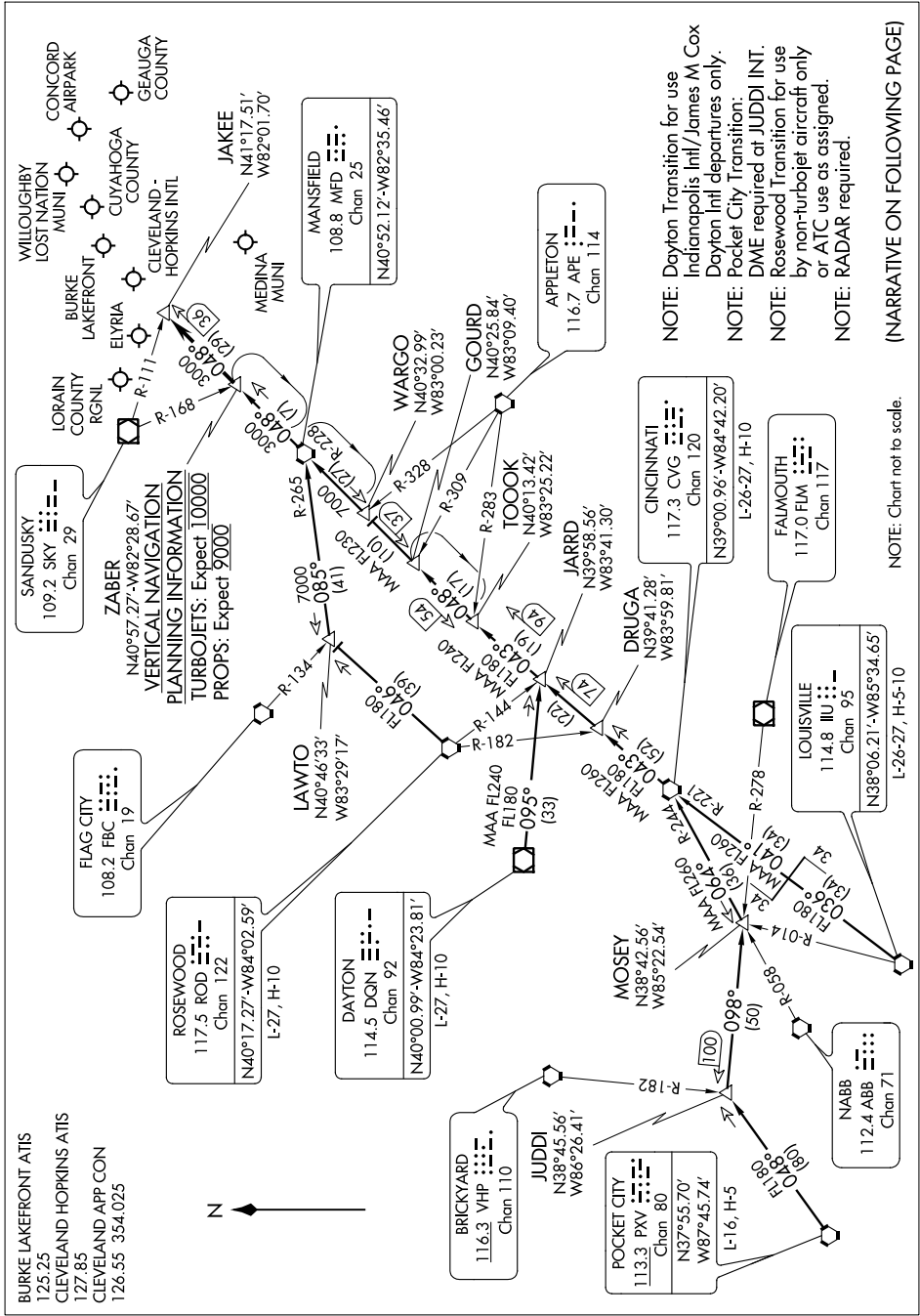


EC-2, 07 FEB 2013 to 07 MAR 2013



NOTE: Dayton Transition for use Indianapolis Intl/James M Cox Dayton Intl departures only.
NOTE: Pocket City Transition: DME required at JUDDI INT.
NOTE: Rosewood Transition for use by non-turbojet aircraft only or ATC use as assigned.
NOTE: RADAR required.

(NARRATIVE ON FOLLOWING PAGE)

NOTE: Chart not to scale.

EC-2, 07 FEB 2013 to 07 MAR 2013