


WAAS CH 81806 W06B	APP CRS 057°	Rwy Idg TDZE Apt Elev	8030 777 791
--	------------------------	-----------------------------	---

RNAV (GPS) RWY 6R

CLEVELAND-HOPKINS INTL (CLE)

▼ For inop MALSR, increase LPV all Cats visibility to RVR 6000. For uncompensated Baro-VNAV systems, LNAV/VNAV NA below -16°C (4°F) or above 47°C (116°F). DME/DME RNP-0.3 NA. Simultaneous approach authorized with Rwy 6L. LNAV procedure NA during simultaneous operations. Use FD or AP providing RNAV track guidance required during simultaneous operations.

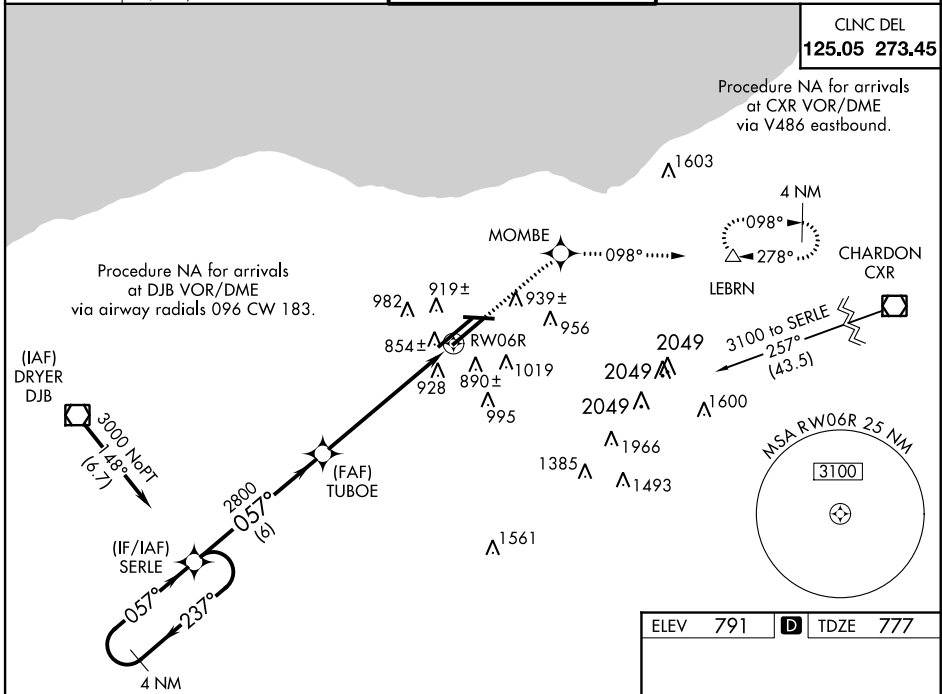
MALSR  MISSED APPROACH: Climb to 3000 direct MOMB E and via 098° track to LEBRN and hold.

ATIS ARR 127.85 DEP 132.375	CLEVELAND APP CON 6R/24L, 28 6L/24R, 10	CLEVELAND TOWER 6R/24L, 10/28 6L/24R	GND CON 6R/24L, 10/28 6L/24R
	124.0 354.025 126.55 354.025	120.9 273.45 124.5 273.45	121.7 273.45 133.6 273.45

CLNC DEL
125.05 273.45

Procedure NA for arrivals at CXR VOR/DME via V486 eastbound.

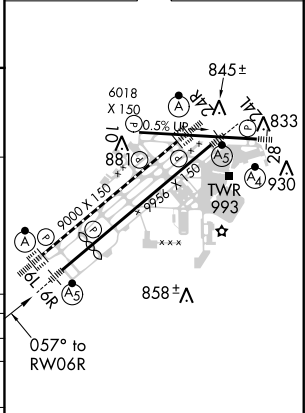
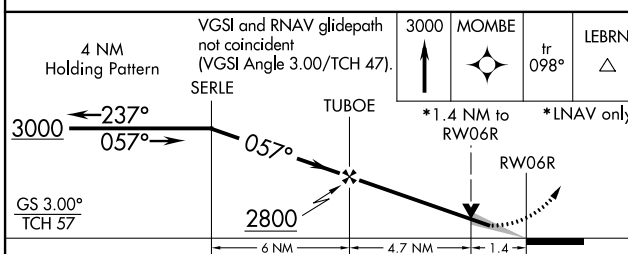
Procedure NA for arrivals at DJB VOR/DME via airway radials 096 CW 183.



EC-2, 07 FEB 2013 to 07 MAR 2013

EC-2, 07 FEB 2013 to 07 MAR 2013

ELEV 791	D TDZE 777
----------	-------------------



CATEGORY	A	B	C	D
LPV DA		1104/40	327 (400-¾)	
LNAV/VNAV DA		1215/50	438 (500-1)	
LNAV MDA	1260/24	483 (500-½)	1260/40 483 (500-¾)	1260/50 483 (500-1)
CIRCLING	1300-1	509 (600-1)	1320-1½ 529 (600-1½)	1360-2 569 (600-2)

REIL Rwy 10
TDZ/CL Rwy 6R, 6L, 24R, and 24L
HIRL Rws 10-28, 6R-24L, and 6L-24R