

CLEVELAND, OHIO

AL-84 (FAA)

13010

WAAS CH <b>40109</b> <b>W28A</b>	APP CRS <b>280°</b>	Rwy Idg THRE <b>799</b> Apt Elev <b>799</b>	<b>6017</b>
--	------------------------	---	-------------

# RNAV (GPS) RWY 28

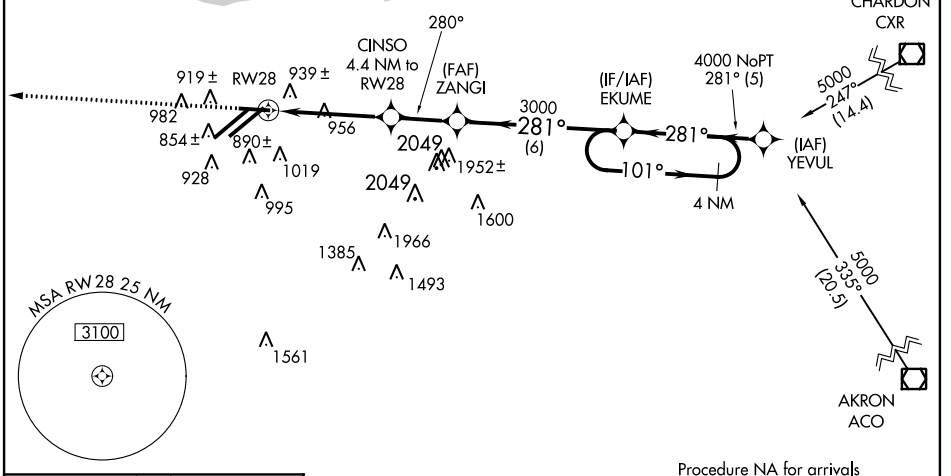
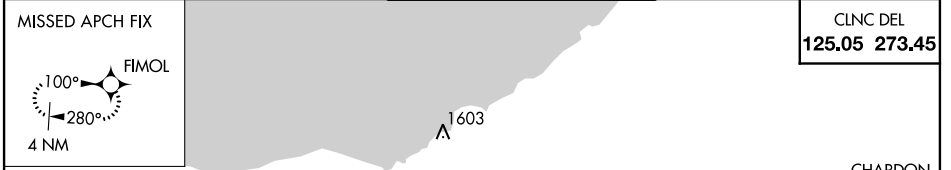
CLEVELAND-HOPKINS INTL (CLE)

When VGSI inop, Circling Rwy 10 NA at night. For uncompensated Baro-VNAV systems, LNAV/VNAV NA below -16°C (4°F) or above 38°C (100°F). DME/DME RNP-0.3 NA

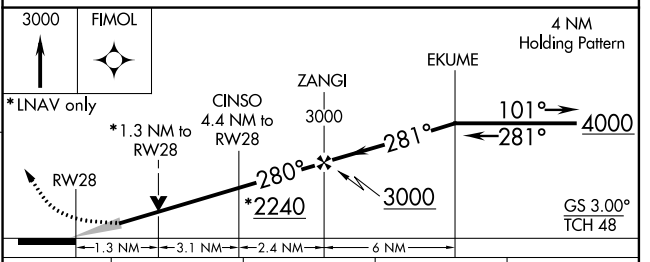
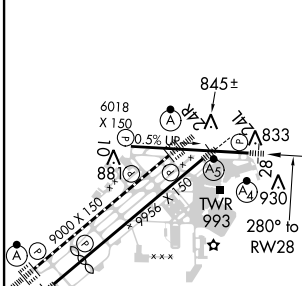
MALSF

MISSED APPROACH: Climb to 3000 direct FIMOL and hold.

ATIS ARR <b>127.85</b> DEP <b>132.375</b>	CLEVELAND APP CON 6R/24L, 28 <b>124.0</b> <b>354.025</b> 6L/24R, 10 <b>126.55</b> <b>354.025</b>	CLEVELAND TOWER 6R/24L, 10/28 <b>120.9</b> <b>273.45</b> 6L/24R <b>124.5</b> <b>273.45</b>	GND CON 6R/24L, 10/28 <b>121.7</b> <b>273.45</b> 6L/24R <b>133.6</b> <b>273.45</b>
---	--	--	--



ELEV 799	<b>D</b>	THRE 799
----------	----------	----------



CATEGORY	A	B	C	D
LPV DA		999/24	200 (200-½)	
LNAV/VNAV DA		1154/40	355 (400-¾)	
LNAV MDA	1260/24	461 (500-½)	1260/50	461 (500-1)
CIRCLING	1300-1	501 (600-1)	1320-1½ 521 (600-1½)	1360-2 561 (600-2)

REIL Rwy 10  
TDZ/CL Rwy 6R, 6L, 24R, and 24L  
HIRL Rws 10-28, 6R-24L, and 6L-24R

CLEVELAND, OHIO  
Amdt 2 15DEC11

41°25'N-81°51'W

# CLEVELAND-HOPKINS INTL (CLE) RNAV (GPS) RWY 28

EC-2, 07 FEB 2013 to 07 MAR 2013

EC-2, 07 FEB 2013 to 07 MAR 2013