

WAAS CH 60904 W24A	APP CRS 237°	Rwy Idg THRE 780 Apt Elev 799	9000 780 799
--	------------------------	---	---

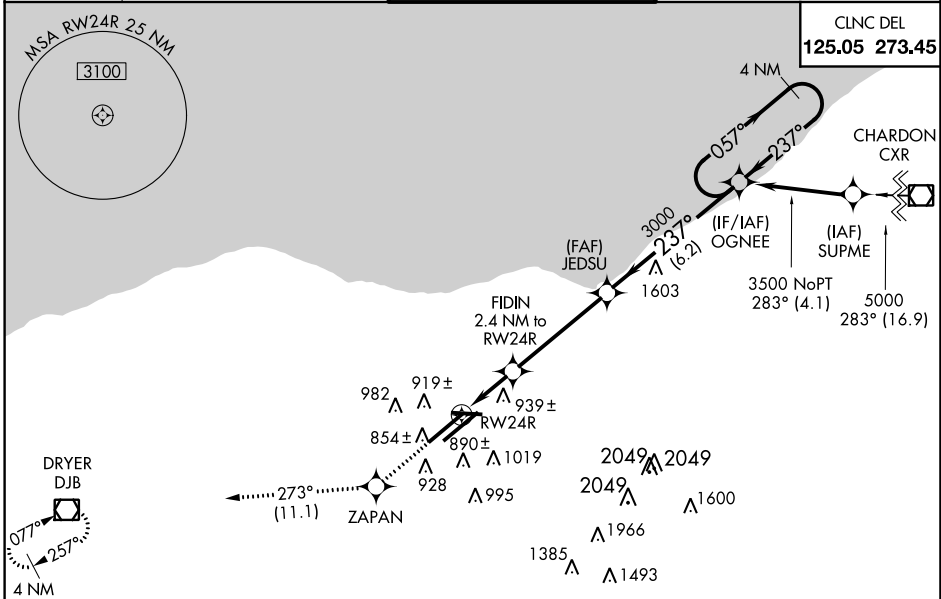
RNAV (GPS) RWY 24R

CLEVELAND-HOPKINS INTL (CLE)

▼ When VGSI inop, Circling Rwy 10 NA at night. For uncompensated Baro-VNAV systems, LNAV/VNAV NA below -1.6°C (4°F) or above 38°C (100°F). DME/DME RNP-0.3 NA. Simultaneous approach authorized with Rwy 24L. LNAV procedure NA during simultaneous operations. Use of FD or AP providing RNAV track guidance required during simultaneous operations.

ALSIF-2
MISSED APPROACH: Climb to 3000 direct ZAPAN and on track 273° to DJB VOR/DME and hold.

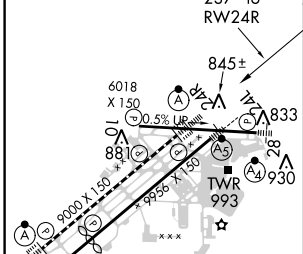
ATIS ARR 127.85 DEP 132.375	CLEVELAND APP CON 6R/24L, 28 124.0 354.025 6L/24R, 10 126.55 354.025	CLEVELAND TOWER 6R/24L, 10/28 120.9 273.45 6L/24R 124.5 273.45	GND CON 6R/24L, 10/28 121.7 273.45 6L/24R 133.6 273.45
---	--	--	--



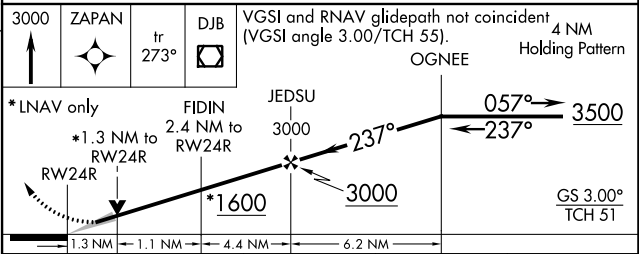
EC-2, 07 FEB 2013 to 07 MAR 2013

EC-2, 07 FEB 2013 to 07 MAR 2013

ELEV 799	D	THRE 780
----------	----------	----------



REIL Rwy 10 TDZ/CL Rwy 6R, 6L, 24L nd 24R HIRL Rwy 10-28, 6R-24L, and 6L-24R
--



CATEGORY	A	B	C	D
LPV DA		980/24	200 (200-½)	
LNAV/VNAV DA		1154/40	374 (400-¾)	
LNAV MDA	1260/24	480 (500-½)	1260/50	480 (500-1)
CIRCLING	1300-1	501 (600-1)	1320-1½ 521 (600-½)	1360-2 561 (600-2)