

WAAS CH 77506 W24B	APP CRS 237°	Rwy Idg THRE 786 Apt Elev 799	9956
----------------------------------------	------------------------	---------------------------------------------------	-------------

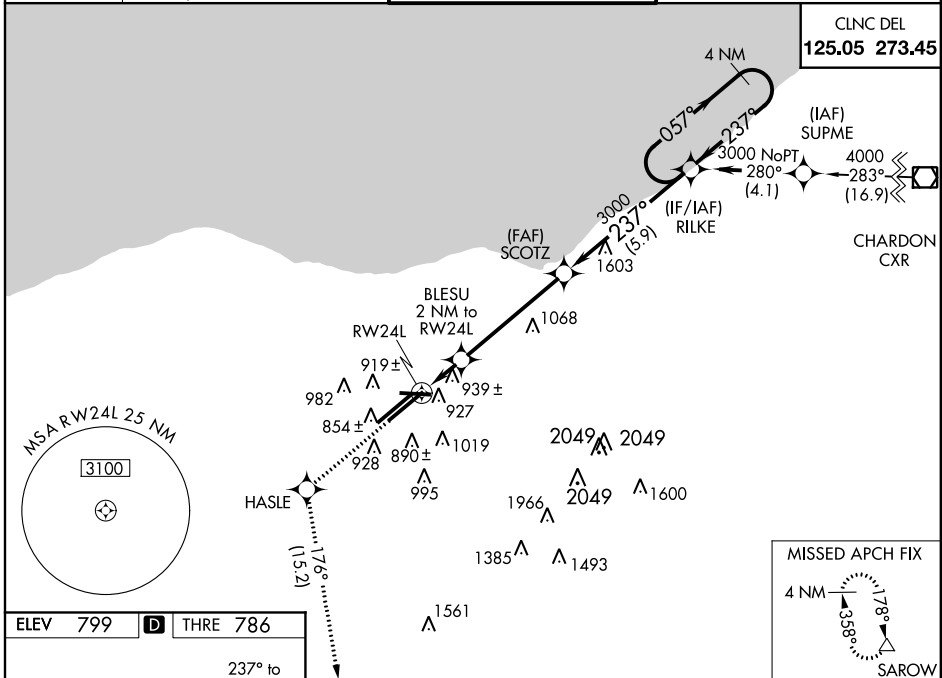
RNAV (GPS) RWY 24L

CLEVELAND-HOPKINS INTL (CLE)

When VGSI inop, Circling Rwy 10 NA at night. For uncompensated Baro-VNAV systems, LNAV/VNAV NA below -16°C (4°F) or above 38°C (100°F). DME/DME RNP-0.3 NA. Simultaneous approach authorized with Rwy 24R. LNAV procedure NA during simultaneous operations. Use of FD or AP providing RNAV track guidance required during simultaneous operations.

MALSR 	MISSED APPROACH: Climb to 3000 direct HASLE and on track 176° to SAROW and hold.
-----------	----------------------------------------------------------------------------------

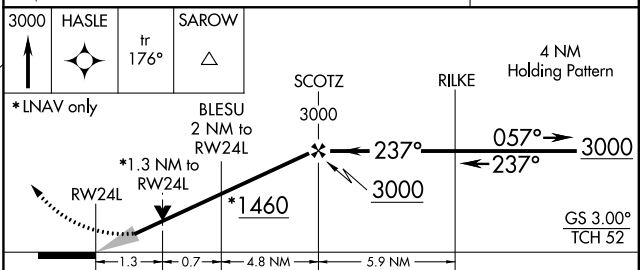
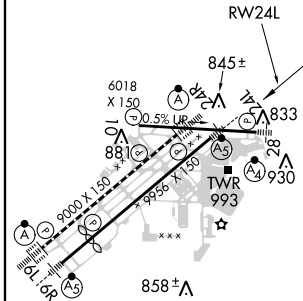
ATIS ARR 127.85 DEP 132.375	CLEVELAND APP CON 6R/24L, 28 124.0 354.025 6L/24R, 10 126.55 354.025	CLEVELAND TOWER 6R/24L, 10/28 120.9 273.45 6L/24R 124.5 273.45	GND CON 6R/24L, 10/28 121.7 273.45 6L/24R 133.6 273.45
-------------------------------------------------	------------------------------------------------------------------------------------------	------------------------------------------------------------------------------------	----------------------------------------------------------------------------



EC-2, 07 FEB 2013 to 07 MAR 2013

EC-2, 07 FEB 2013 to 07 MAR 2013

ELEV 799	D	THRE 786
----------	----------	----------



CATEGORY	A	B	C	D
LPV DA		986/24	200 (200-½)	
LNAV/VNAV DA		1154/40	368 (400-¾)	
LNAV MDA	1260/24	474 (500-½)	1260/50	474 (500-1)
CIRCLING	1300-1	501 (600-1)	1320-1½ 521 (600-1½)	1360-2 561 (600-2)

REIL Rwy 10
TDZ/CL Rwy 6R, 6L, 24L and 24R
HIRL Rws 10-28, 6R-24L, and 6L-24R