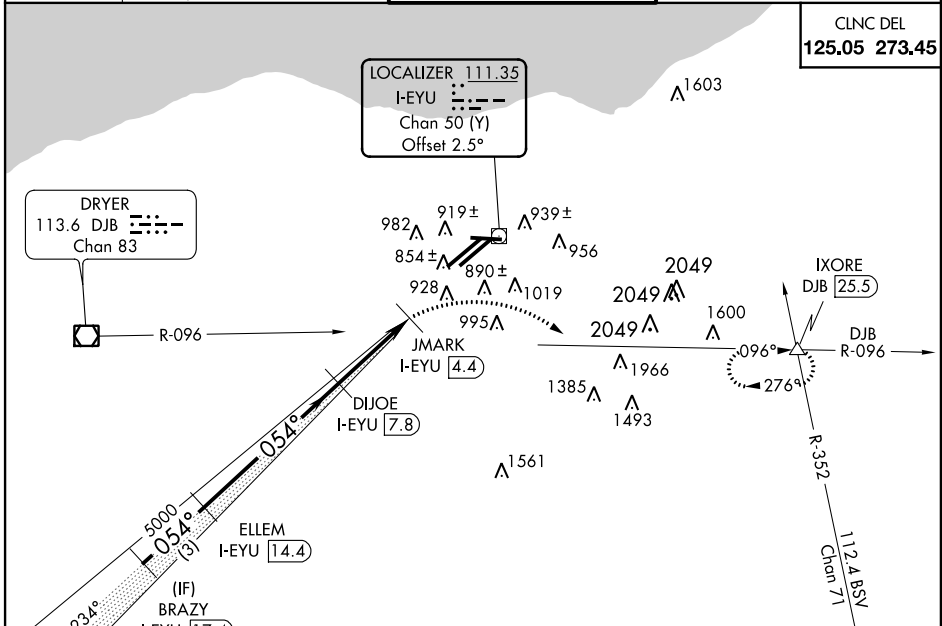


LOC/DME I-EYU 111.35 Chan 50 (Y)	APP CRS 054°	Rwy Idg TDZE Apt Elev 8030 777 791
---	------------------------	--

LDA/DME RWY 6R
CLEVELAND-HOPKINS INTL (CLE)

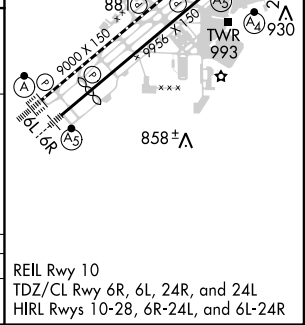
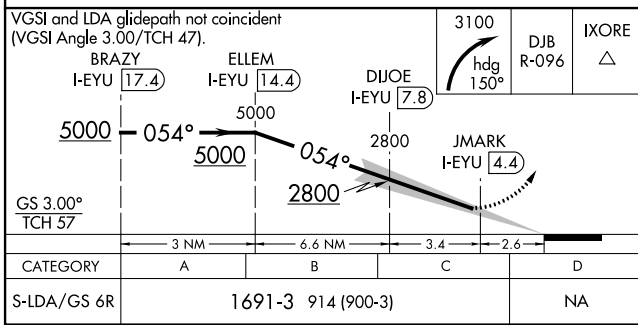
▼ Inop table does not apply. Runway 6L and 6R separated by 1241 feet centerline to centerline. Procedure NA when glideslope not available. Visibility reduction by helicopters NA. Simultaneous approach authorized with Rwy 6L.
▲ NA
MALS R
MISSED APPROACH: Climbing right turn to 3100 via heading 150° and DJB VOR/DME R-096 to IXORE INT/DJB 25.5 DME and hold.

ATIS ARR 127.85 DEP 132.375	CLEVELAND APP CON 6R/24L, 28 6L/24R, 10	CLEVELAND TOWER 6R/24L, 10/28 6L/24R	GND CON 6R/24L, 10/28 6L/24R
124.0 354.025	120.9 273.45	121.7 273.45	133.6 273.45



RADAR REQUIRED LDA/GLIDESLOPE

ELEV 791	D	TDZE 777
----------	---	----------



EC-2, 07 FEB 2013 to 07 MAR 2013

EC-2, 07 FEB 2013 to 07 MAR 2013