

CLEVELAND, OHIO

AL-84 (FAA)

12208

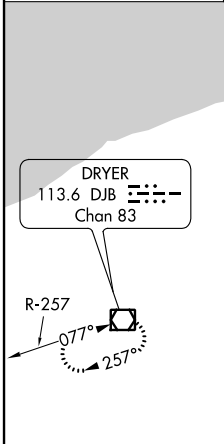
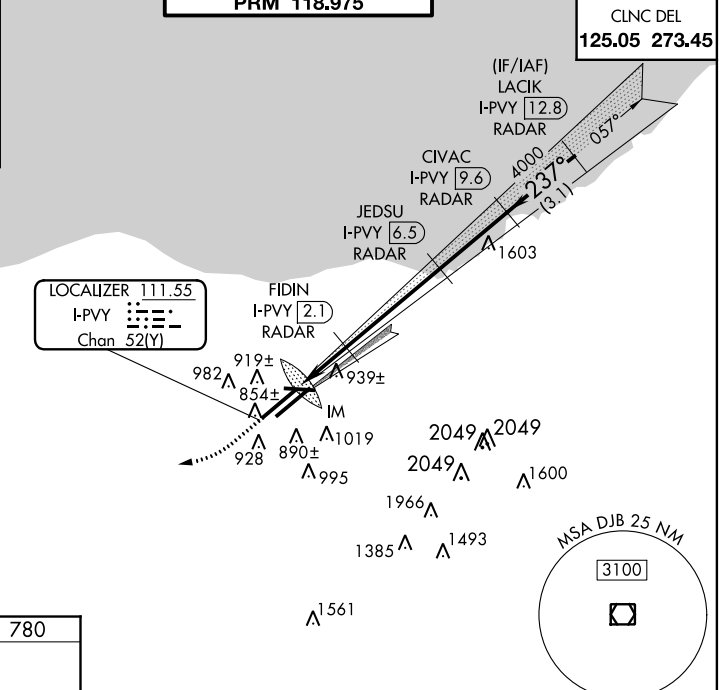
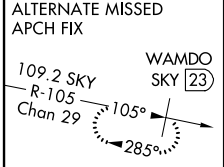
# ILS PRM RWY 24R (SIMULTANEOUS CLOSE PARALLEL) CLEVELAND-HOPKINS INTL (CLE)

LOC/DME I-PVY <b>111.55</b> Chan <b>52 (Y)</b>	APP CRS <b>237°</b>	Rwy Idg THRE <b>780</b> Apt Elev <b>799</b>	<b>9000</b>
--	------------------------	---	-------------

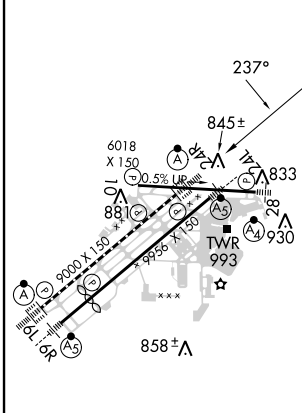
**NA** Runway 24R and 24L separated by 1241 feet centerline to centerline.  
 Simultaneous close parallel approach authorized with LDA PRM Rwy 24L.  
 Procedure NA when glideslope not available. Dual VHFcomm required.  
 See additional requirements on AAUP.

**ALSF-2** MISSED APPROACH:  
 Climb to 1700, then climbing right turn to 3000 direct DJB VOR/DME and hold.

ATIS ARR <b>127.85</b> DEP <b>132.375</b>	CLEVELAND APP CON 6R/24L, 28 <b>124.0 354.025</b> 6L/24R, 10 <b>126.55 354.025</b>	CLEVELAND TOWER 6R/24L, 10/28 <b>120.9 273.45</b> 6L/24R <b>124.5 273.45</b> <b>PRM 118.975</b>	GND CON 6R/24L, 10/28 <b>121.7 273.45</b> 6L/24R <b>133.6 273.45</b>
---	--	--	--



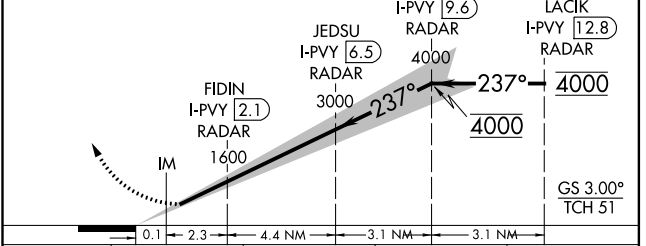
ELEV 799	<b>D</b>	THRE 780
----------	----------	----------



REIL Rwy 10  
 TDZ/CL Rwy 6R, 6L, 24L and 24R  
 HIRL Rwsy 10-28, 6R-24L, and 6L-24R

**RADAR and DME REQUIRED**

1700	3000	DJB	VGSI and ILS glidepath not coincident (VGSI Angle 3.00/TCH 55).
------	------	-----	---



CATEGORY	A	B	C	D
S-ILS 24R	980/18 200 (200-1/2)			

CLEVELAND, OHIO  
 Amdt 1 05MAY11

41°25'N-81°51'W

CLEVELAND-HOPKINS INTL (CLE)

## ILS PRM RWY 24R (SIMULTANEOUS CLOSE PARALLEL)

EC-2, 07 FEB 2013 to 07 MAR 2013

EC-2, 07 FEB 2013 to 07 MAR 2013