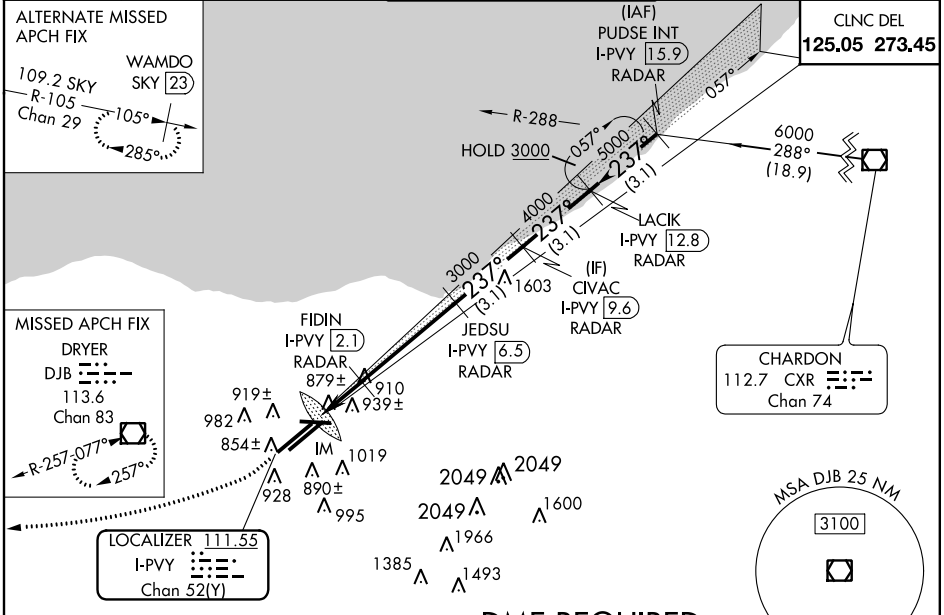


LOC/DME I-PVY 111.55 Chan 52 (Y)	APP CRS 237°	Rwy Idg THRE 780 Apt Elev 799	24R 9000 24L 9956
---	------------------------	---	------------------------------------

ILS or LOC/DME RWY 24R

CLEVELAND-HOPKINS INTL (CLE)

ATIS ARR 127.85 DEP 132.375		CLEVELAND APP CON 6R/24L, 28 124.0 354.025 6L/24R, 10 126.55 354.025		CLEVELAND TOWER 6R/24L, 10/28 120.9 273.45 6L/24R 124.5 273.45		GND CON 6R/24L, 10/28 121.7 273.45 6L/24R 133.6 273.45	
---	--	--	--	--	--	--	--



ELEV 799	D	THRE RWY 24L 786 RWY 24R 780			
237° 6.8 NM from FAF					
REIL Rwy 10 TDZ/CL Rwy 6R, 6L, 24L and 24R HIRL Rwy 10-28, 6R-24L, and 6L-24R FAF to MAP 6.8 NM					
Knots	60	90	120	150	180
Min:Sec	6:48	4:32	3:24	2:43	2:16

DME REQUIRED

1700	3000	DJB	VGSI and ILS glidepath not coincident (VGSI Angle 3.00/TCH 55).	
*LOC only.				
I-PVY [0.3]	I-PVY [0.6]	FIDIN I-PVY [2.1] RADAR	JEDSU I-PVY [6.5] RADAR	
		CIVAC I-PVY [9.6] RADAR	LACK I-PVY [12.8] RADAR	
		PUDSE INT I-PVY [15.9] RADAR		
		6000 237°		
		4000 5000		
		GS 3.00° TCH 51		
CATEGORY	A	B	C	D
S-ILS 24R	980/18 200 (200-½)			
S-LOC 24R	1140/24	360 (400-½)	1140/30	360 (400-¾)
SIDESTEP 24L	1280/60	494 (500-1¼)	1280-1¾ 494 (500-1¾)	1280-2¼ 494 (500-2¼)
CIRCLING	1300-1 501 (600-1)		1320-1½ 521 (600-1½)	1360-2 561 (600-2)

EC-2, 07 FEB 2013 to 07 MAR 2013

EC-2, 07 FEB 2013 to 07 MAR 2013