

ILS or LOC RWY 6R

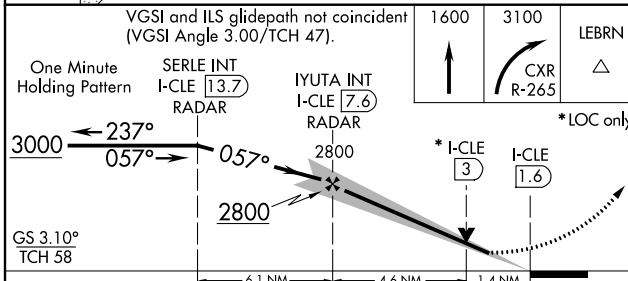
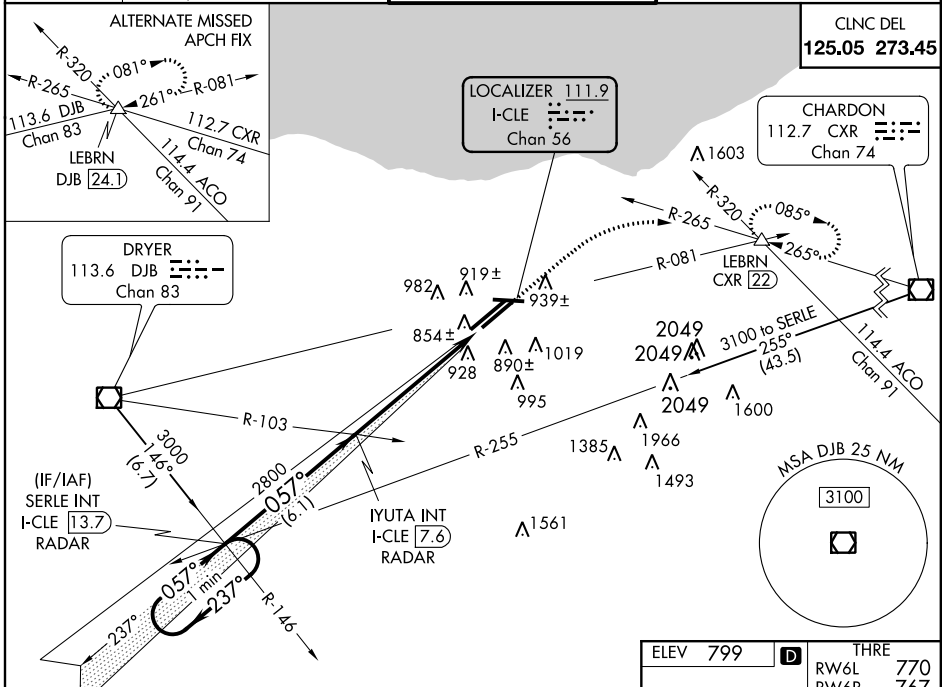
CLEVELAND-HOPKINS INTL (CLE)

LOC/DME I-CLE 111.9 Chan 56	APP CRS 057°	Rwy Idg THRE 767 770 Apt Elev 799 799	6R 8030 9000	6L 767 770 799 799
--	------------------------	---	------------------------	--

▼ When VGSI is inop, Circling Rwy 10 NA at night. Inop table does not apply to Sidestep 6L all Cats. Simultaneous approach authorized with Rwy 6L.

6L ALSF-2	6R MALSRR	MISSED APPROACH: Climb to 1600 then climbing right turn to 3100 on CXR VOR/DME R-265 to LEBRN INT/CXR 22 DME and hold.
-----------	-----------	--

ATIS ARR 127.85 DEP 132.375	CLEVELAND APP CON 6R/24L, 28 6L/24R, 10	CLEVELAND TOWER 6R/24L, 10/28 6L/24R	GND CON 6R/24L, 10/28 6L/24R
	124.0 354.025 126.55 354.025	120.9 273.45 124.5 273.45	121.7 273.45 133.6 273.45



CATEGORY	A	B	C	D
S-ILS 6R	967/18		200 (200-½)	
S-LOC 6R	1260/24	493 (500-½)	1260/50	493 (500-1)
SIDESTEP 6L	1260-1¼	490 (500-1¼)	1260-1¾	1260-2¼
			490 (500-1¾)	490 (500-2¼)
CIRCLING	1300-1	501 (600-1)	1320-1½	1360-2
			521 (600-1½)	561 (600-2)

ELEV 799	THRE 770
RW6L	RW6R 767

REIL Rwy 10
TDZ/CL Rwy 6R, 6L, 24L and 24R
HIRL Rws 10-28, 6R-24L, and 6L-24R
FAF to MAP 6 NM

Knots	60	90	120	150	180
Min:Sec	6:00	4:00	3:00	2:24	2:00

EC-2, 07 FEB 2013 to 07 MAR 2013

EC-2, 07 FEB 2013 to 07 MAR 2013