

LOC/DME I-PXP <b>110.7</b> Chan 44	APP CRS <b>280°</b>	Rwy Idg THRE <b>799</b> Apt Elev <b>799</b>	<b>6017</b>
--	------------------------	---	-------------

# ILS or LOC RWY 28

CLEVELAND-HOPKINS INTL (CLE)

**⚠** When VGSI inop, Circling Rwy 10 NA at night. DME or RADAR required.  
**⚠** # RVR 2600 authorized with use of FD or AP or HUD to DA.  
 For inoperative MALSF, increase S-LOC 28 Cat D visibility to ¼ mile.

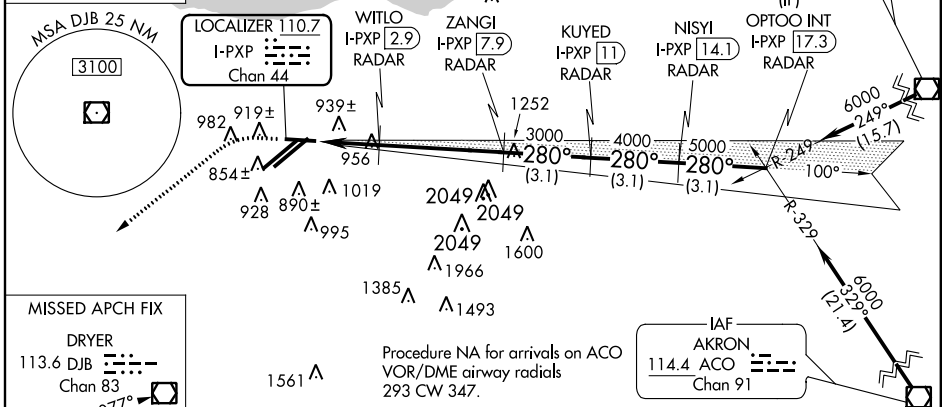
MALSF

**MISSED APPROACH:** Climb to 1400 then climbing left turn to 3000 direct DJB VOR/DME and hold.

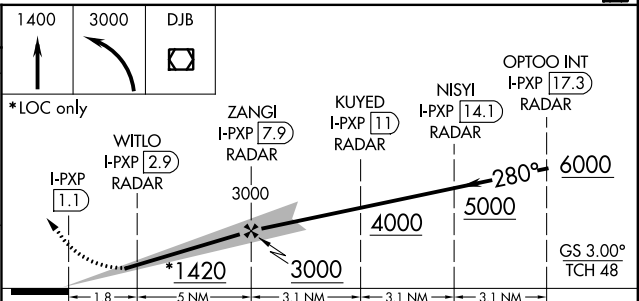
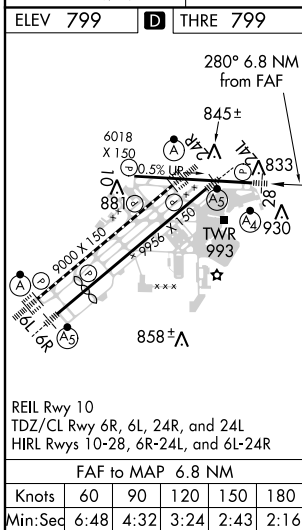
ATIS ARR <b>127.85</b> DEP <b>132.375</b>	CLEVELAND APP CON 6R/24L, 28 <b>124.0 354.025</b> 6L/24R, 10 <b>126.55 354.025</b>	CLEVELAND TOWER 6R/24L, 10/28 <b>120.9 273.45</b> 6L/24R <b>124.5 273.45</b>	GND CON 6R/24L, 10/28 <b>121.7 273.45</b> 6L/24R <b>133.6 273.45</b>
---	--	--	--

ALTERNATE MISSED APCH FIX  
 SANDUSKY  
 109.2 SKY  
 Chan 29

CLNC DEL  
**125.05 273.45**



MISSED APCH FIX  
 DRYER  
 113.6 DJB  
 Chan 83



CATEGORY	A	B	C	D
S-ILS 28	# 999/40		200 (200-¾)	
S-LOC 28	1420/40	621 (700-¾)	1420-1½	621 (700-1½)
CIRCLING	1420-1	621 (700-1)	1420-1¾ 621 (700-1¾)	1420-2 621 (700-2)
WITLO FIX MINIMUMS				
S-LOC 28	1320/40	521 (600-¾)	1320-1¼	521 (600-1¼)
CIRCLING	1320-1	521 (600-1)	1320-1½ 521 (600-1½)	1360-2 561 (600-2)

EC-2, 07 FEB 2013 to 07 MAR 2013

EC-2, 07 FEB 2013 to 07 MAR 2013