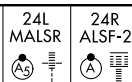


LOC/DME I-HPI 109.9 Chan 36	APP CRS 237°	Rwy Idg THRE Apt Elev	24R 9000 780 799	24L 9956 786 799
--	------------------------	-----------------------------	--	--

ILS or LOC RWY 24L

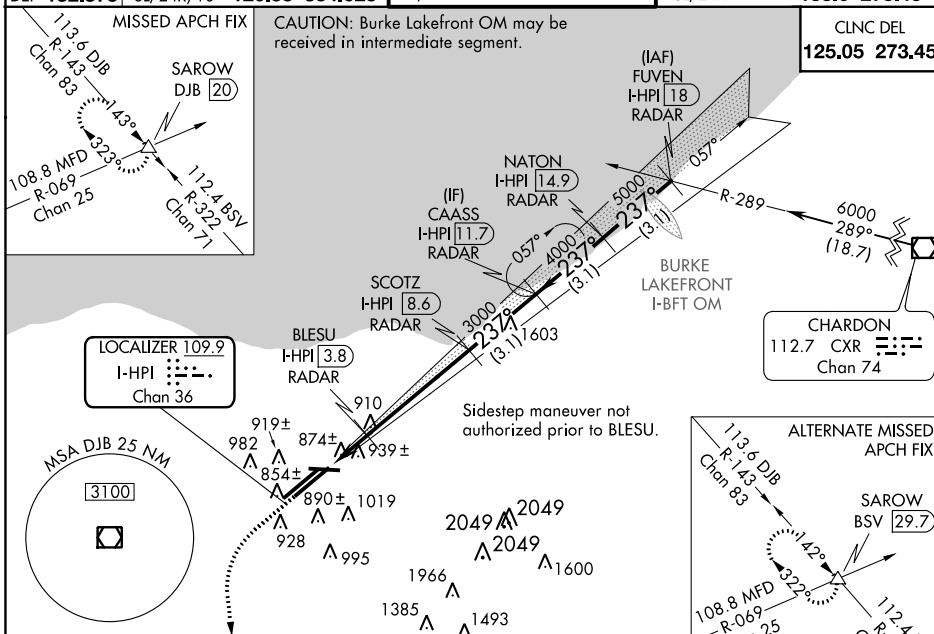
CLEVELAND-HOPKINS INTL (CLE)

When VGSJ inop, Circling Rwy 10 NA at night. Inop table does not apply to Sidestep 24R. DME or RADAR required. Simultaneous approach authorized with Rwy 24R.



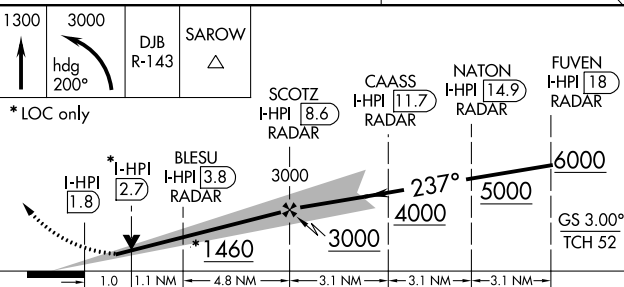
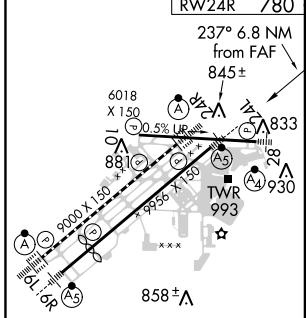
MISSED APPROACH: Climb to 1300 then climbing left turn to 3000 on heading 200° and on DJB VOR/DME R-143 to SAROW INT/DJB 20 DME and hold.

ATIS ARR 127.85 DEP 132.375	CLEVELAND APP CON 6R/24L, 28 124.0 354.025 6L/24R, 10 126.55 354.025	CLEVELAND TOWER 6R/24L, 10/28 120.9 273.45 6L/24R 124.5 273.45	GND CON 6R/24L, 10/28 121.7 273.45 6L/24R 133.6 273.45
---	--	--	--



ELEV 799	THRE RW24L 786	RW24R 780
----------	----------------	-----------

DME or RADAR REQUIRED



REIL Rwy 10 TDZ/CL Rwy 6R, 6L, 24L and 24R HIRL Rws 10-28, 6R-24L, and 6L-24R	FAF to MAP 6.8 NM
Knots	60 90 120 150 180
Min:Sec	6:48 4:32 3:24 2:43 2:16

CATEGORY	A	B	C	D
S-ILS 24L	986/18		200 (200-½)	
S-LOC 24L	1140/24	354 (400-½)	1140/30	354 (400-¾)
SIDESTEP 24R	1140/50	360 (400-1)	1140-1½ 360 (400-1½)	1140-2 360 (400-2)
CIRCLING	1300-1 501 (600-1)		1320-1½ 521 (600-1½)	1360-2 561 (600-2)

EC-2, 07 FEB 2013 to 07 MAR 2013

EC-2, 07 FEB 2013 to 07 MAR 2013