

CLEVELAND, OHIO

AL-84 (FAA)

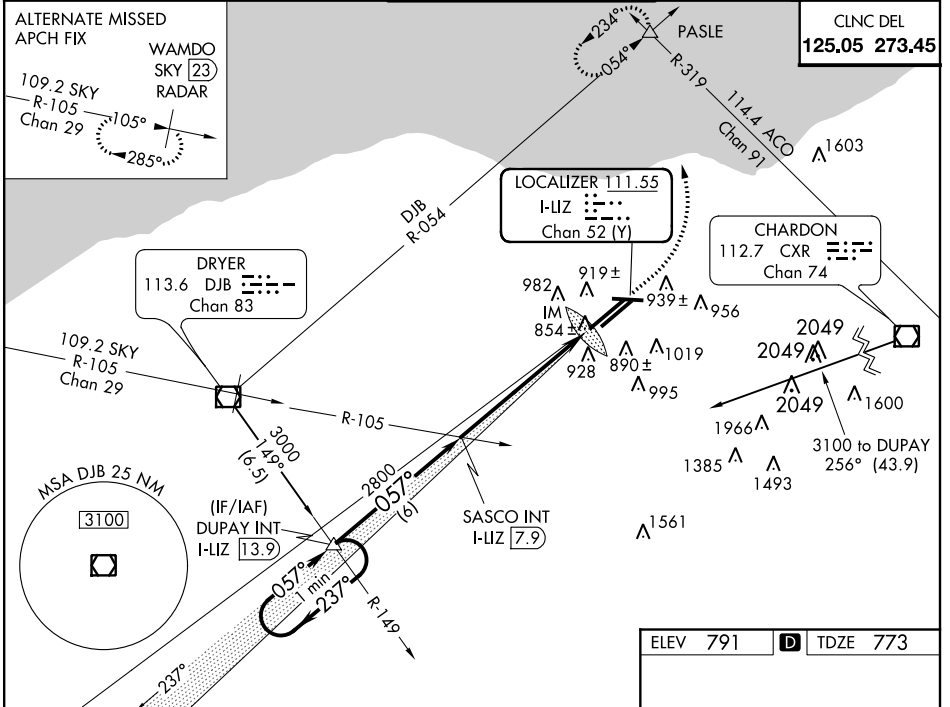
12152

LOC/DME I-LIZ 111.55 Chan 52 (Y)	APP CRS 057°	Rwy Idg TDZE 773 Apt Elev 791	9000
---	------------------------	---	-------------

ILS RWY 6L (CAT III)

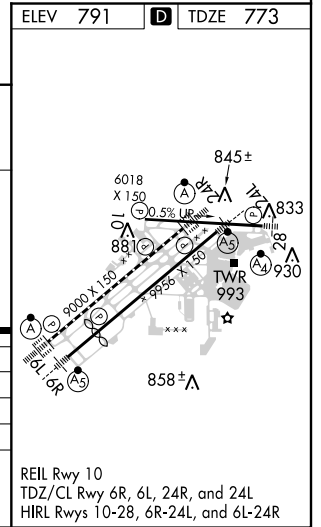
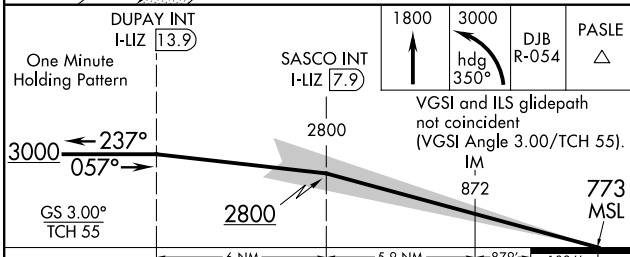
CLEVELAND-HOPKINS INTL (CLE)

Simultaneous approach authorized with Rwy 6R.		ALSF-2 	MISSED APPROACH: Climb to 1800, then climbing left turn to 3000 via heading 350° and DJB R-054 to PASLE INT and hold
ATIS ARR 127.85 DEP 132.375	CLEVELAND APP CON 6R/24L, 28 124.0 354.025 6L/24R, 10 126.55 354.025	CLEVELAND TOWER 6R/24L, 10/28 120.9 273.45 6L/24R 124.5 273.45	GND CON 6R/24L, 10/28 121.7 273.45 6L/24R 133.6 273.45



EC-2, 07 FEB 2013 to 07 MAR 2013

EC-2, 07 FEB 2013 to 07 MAR 2013



CATEGORY	A	B	C	D
S-ILS 6L			CAT IIIa	RVR 07
S-ILS 6L			CAT IIIb	RVR 06
S-ILS 6L			CAT IIIc	NA

CATEGORY III ILS - SPECIAL AIRCREW & AIRCRAFT CERTIFICATION REQUIRED

CLEVELAND, OHIO
Amdt 2C 05APR12

41°25'N-81°51'W

CLEVELAND-HOPKINS INTL (CLE)
ILS RWY 6L (CAT III)