

CLEVELAND, OHIO

AL-84 (FAA)

12152

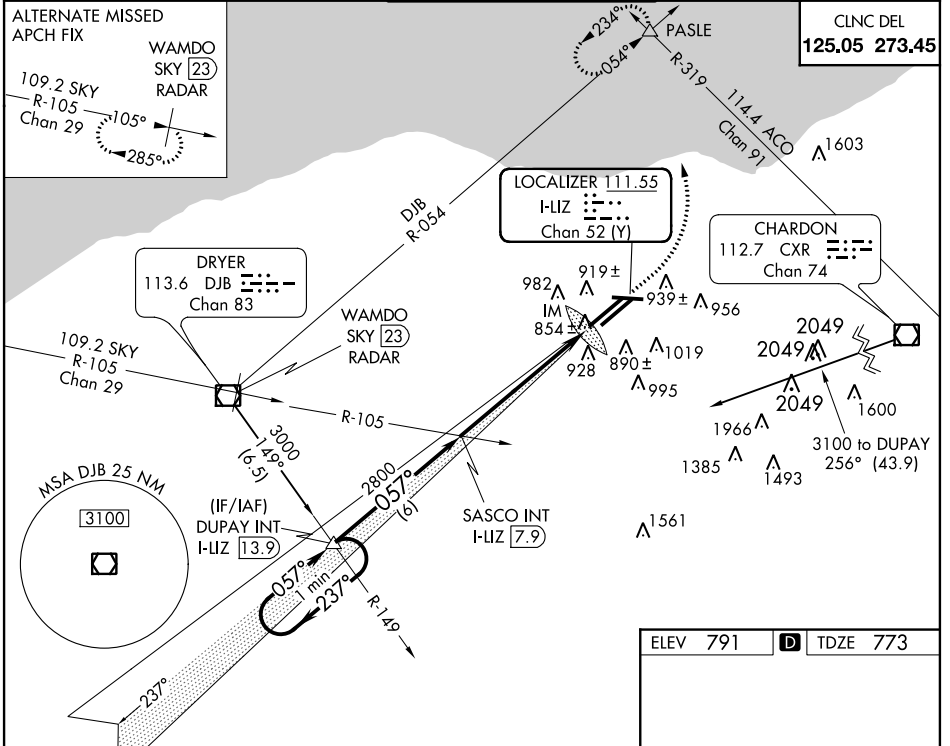
LOC/DME I-LIZ <b>111.55</b> Chan 52 (Y)	APP CRS <b>057°</b>	Rwy Idg TDZE Apt Elev	<b>9000</b> <b>773</b> <b>791</b>
---	------------------------	-----------------------------	---

# ILS RWY 6L (CAT II)

CLEVELAND-HOPKINS INTL (CLE)

Simultaneous approach authorized with Rwy 6R. 		MISSED APPROACH: Climb to 1800, then climbing left turn to 3000 via heading 350° and DJB R-054 to PASLE INT and hold
---	--	--

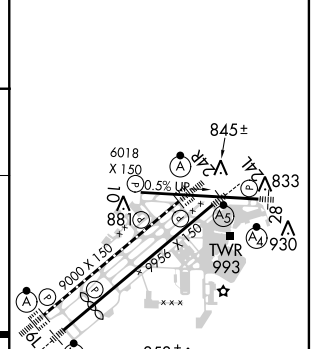
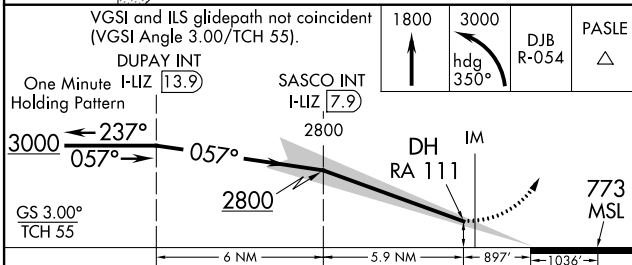
ATIS ARR <b>127.85</b> DEP <b>132.375</b>	CLEVELAND APP CON 6R/24L, 28 <b>124.0 354.025</b> 6L/24R, 10 <b>126.55 354.025</b>	CLEVELAND TOWER 6R/24L, 10/28 <b>120.9 273.45</b> 6L/24R <b>124.5 273.45</b>	GND CON 6R/24L, 10/28 <b>121.7 273.45</b> 6L/24R <b>133.6 273.45</b>
---	--	--	--



EC-2, 07 FEB 2013 to 07 MAR 2013

EC-2, 07 FEB 2013 to 07 MAR 2013

ELEV 791	<b>D</b>	TDZE 773
----------	----------	----------



CATEGORY	A	B	C	D
S-ILS 6L	RA 111/12 100 DA 873			

**CATEGORY II ILS - SPECIAL AIRCREW & AIRCRAFT CERTIFICATION REQUIRED**

REIL Rwy 10  
TDZ/CL Rwy 6R, 6L, 24R, and 24L  
HIRL Rwys 10-28, 6R-24L, and 6L-24R

CLEVELAND, OHIO  
Amdt 2C 05APR12

41°25'N-81°51'W

CLEVELAND-HOPKINS INTL (CLE)  
**ILS RWY 6L (CAT II)**